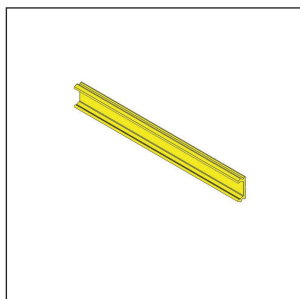


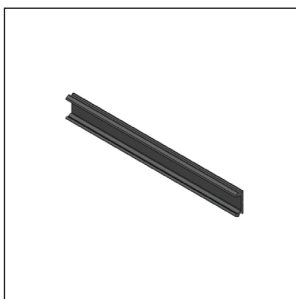


ACCESSORIES

T-SLOT COVERS



T- Slot Cover, Safety Yellow
E050022100
Page 147



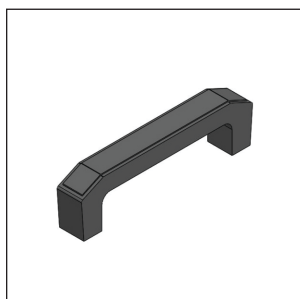
T-Slot Cover, Black
E050032100
Page 148

PANELS



1" x 1" Black Plastic Coated
12 Gauge Wire Mesh Panel
H070042100
Page 149

PLASTIC DOOR HANDLES



Plastic Door Handle
for Panels
H080012100
Page 150



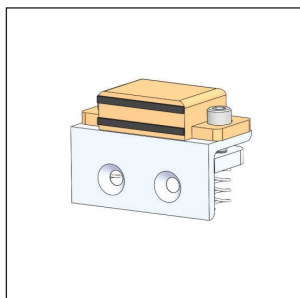
Plastic Door Handle for
Extrusion T-Slots
H080022100
Page 151

PLASTIC DOOR HINGE

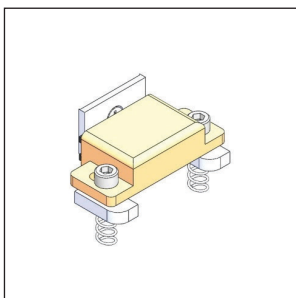


Hardware, plastic T-slot
Hinge w/t-bolts
H080120100
Page 152

MAGNETIC CATCH ASSEMBLIES

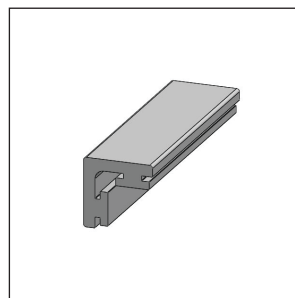


Magnetic Catch Assembly
H080091100
Page 153

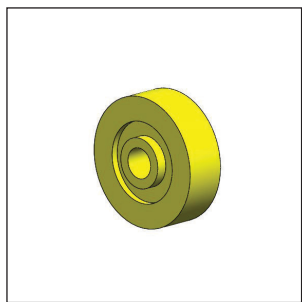


Magnetic Catch Assembly
for Tri-Slot Support Beam
H080101100
Page 154

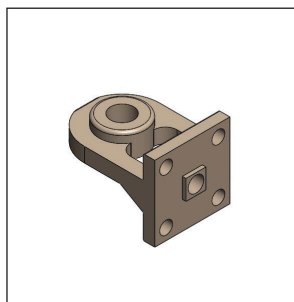
CORNER EXTRUSION



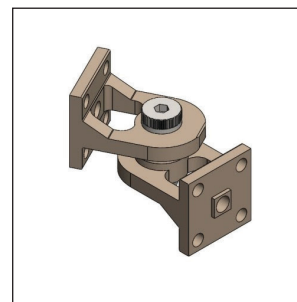
Corner Extrusion
E050202100
Page 155

COVERED ROLLER

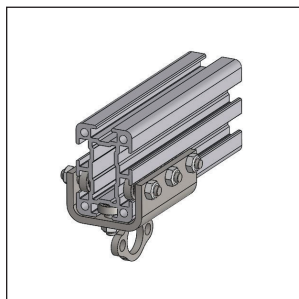
Covered Roller
H030192101
Page 155

1X1 END BRACKETS

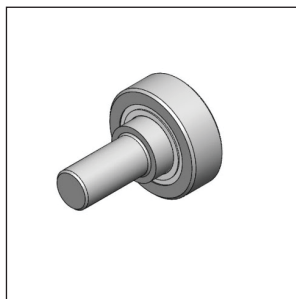
1 x 1 End Bracket
B070052100
Page 156



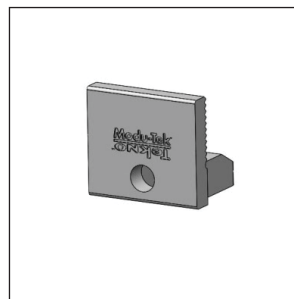
1 x 1 End Bracket Swivel
B070051100
Page 156

TOOL TROLLEY

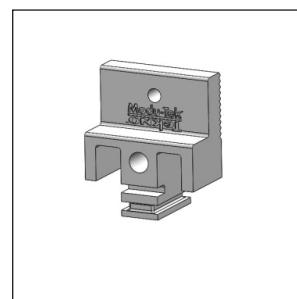
Tool Trolley Assembly
H130031101
Page 157



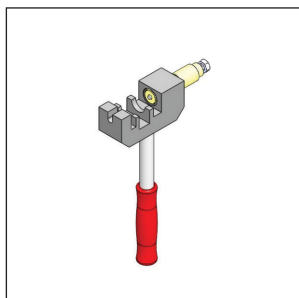
Cam Roller
H130021102
Page 157

PANEL CLAMP ASSEMBLY

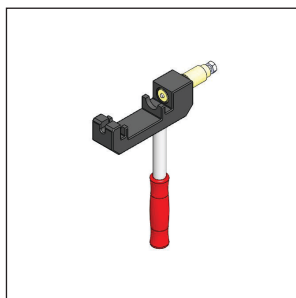
Panel Clamp Assembly
B049011100
Page 158



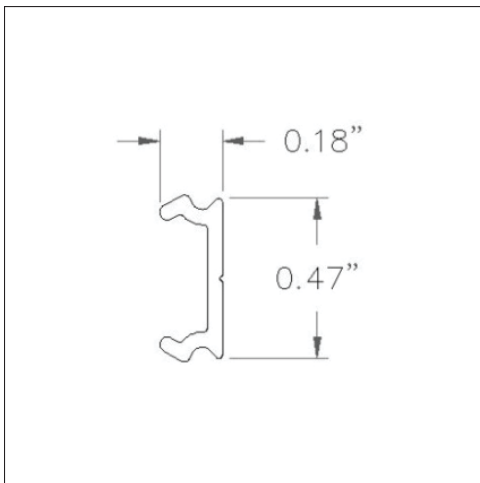
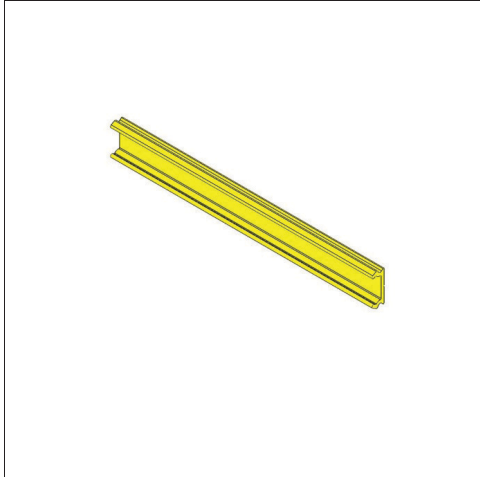
Panel Clamp Assembly
B049011100
Page 158

CHAIN BREAK TOOLS

Chain Break Tool, Narrow
T040011100
Page 159



Chain Break Tool, Wide
T040021100
Page 159



E050022100 T-Slot Cover, Safety Yellow

TYPICAL USE:

- To cover T-slots.
- To hold cables and piping in position.

FEATURES:

- Flexible snap-in profile.
- No hardware or special tools required to insert into beam extrusions.

MATERIAL:

- Rigid Polyvinyl Chloride Extrusion.

WEIGHT PER FOOT:

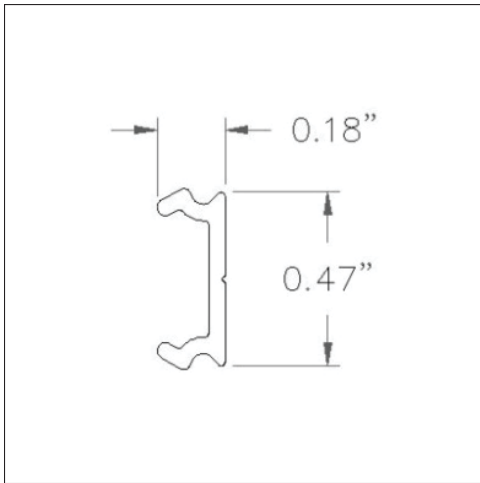
- 0.02 lb [0.01 kg]

STANDARD LENGTH AVAILABLE:

- 16.0 ft [4.9 m]

MAXIMUM LENGTH AVAILABLE:

- 16.0 ft [4.9 m]



E050032100 T-Slot Cover, Black

TYPICAL USE:

- To cover T-slots.
- To hold cables and piping in position.

FEATURES:

- Flexible snap-in profile.
- No hardware or special tools required to insert into beam extrusions.

MATERIAL:

- Rigid Polyvinyl Chloride Extrusion.

WEIGHT PER FOOT:

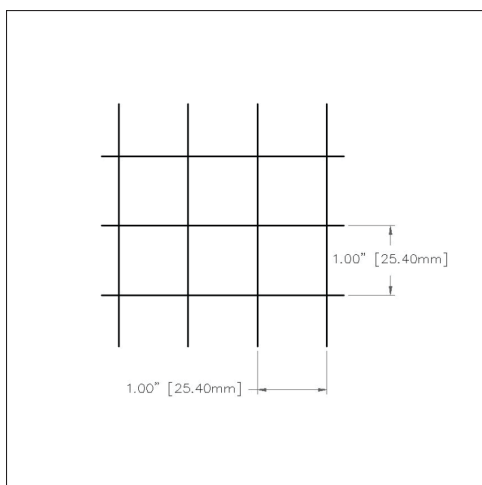
- 0.02 lb [0.01 kg]

STANDARD LENGTH AVAILABLE:

- 16.0 ft [4.9 m]

MAXIMUM LENGTH AVAILABLE:

- 16.0 ft [4.9 m]



H070042100

1" x 1" Black Plastic-Coated 12 Gauge Wire Mesh Panel

TYPICAL USE:

- For guarding enclosure applications with all Modu-Tek® extrusions.

FEATURES:

- 1.00" [25.40mm] Square openings.

WEIGHT PER SQUARE FOOT:

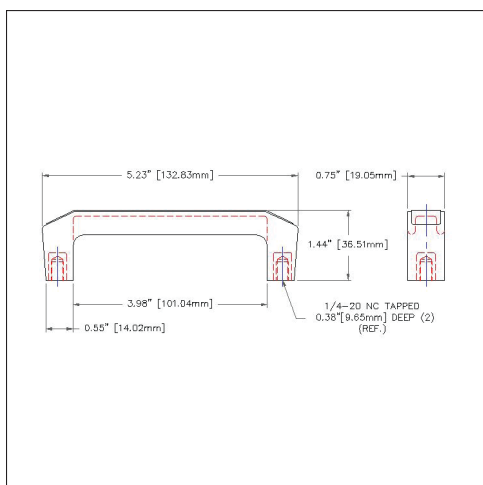
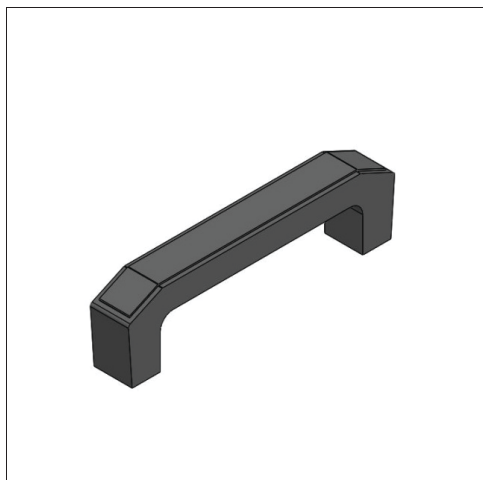
- 1.00 lb [0.45 kg]

STANDARD / MAXIMUM SIZE:

- 4.0 ft x 8.0 ft [1.2 m x 2.4 m] sheet

CUSTOM SIZES:

- Cut sizes smaller than standard are available.



H080012100 Plastic Door Handle for Panels

TYPICAL USE:

- To be mounted as a handle to sliding panels, doors, and access hatches.

FEATURES:

- Lightweight and sturdy.
- 1/4" - 20 inserts accept standard screws for attachment to surfaces.

MATERIAL:

- Polypropylene-Copolymer

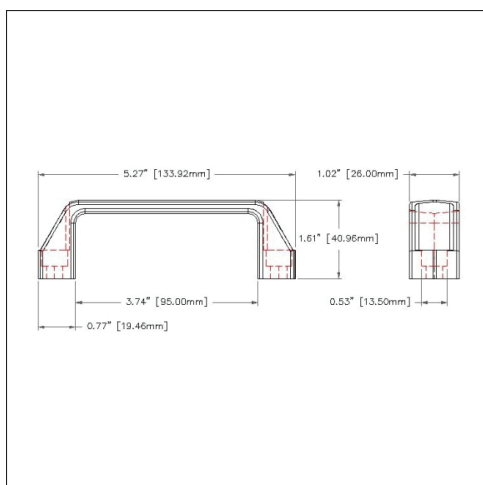
WEIGHT:

- 0.08 lb [0.03 kg]

HARDWARE RECOMMENDED FOR ASSEMBLY:

- 1/4" - 20 x 1/2" Flat Head Cap Screws (25C50KFCS), 2 each.

Assembly Note: Panel holes must be drilled and countersunk to use handle with Flat Head Cap Screws.



H080022100 Plastic Door Handle for Extrusion T-Slots

TYPICAL USE:

- To be mounted as a handle to extrusion Tslots.

FEATURES:

- Lightweight and sturdy.
- 1/4" - 20 inserts accept standard screws for attachment to extrusions.

MATERIAL:

- Thermoplastic, Glass Fiber Reinforced

WEIGHT:

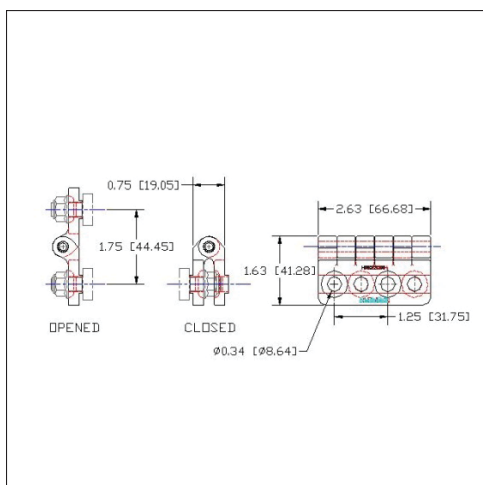
- 0.09 lb [0.04 kg]

HARDWARE RECOMMENDED FOR ASSEMBLY:

- 1/4" - 20 x 5/8" Socket Head Cap Screws (25C62KCSS), 2 each.
- Double Square Nuts (H010072100), 2 each.
- 5/16" - 18 x 5/16" Socket Set Screws with Cup Points (31C31KKCS), 2 each.

Required in lieu of above listed 5/8" Socket Head Cap Screws (25C62KCSS) when mounting to the Tri-Slot Support Beam (H080022100):

- 1/4" - 20 x 1/2" Socket Head Cap Screws (25C50KCSS), 4 each.



H080120100 Hardware, Plastic T-Slot Hinge with T-Bolts

TYPICAL USE:

- Hinge for doors and swing-out or pivoting structures.

FEATURES:

- Mounts directly to extrusion T-slots.

MATERIALS:

- Leaves: Reinforced Polyamide.
- Hinge Pin: AISI 304 Stainless Steel.

WEIGHT:

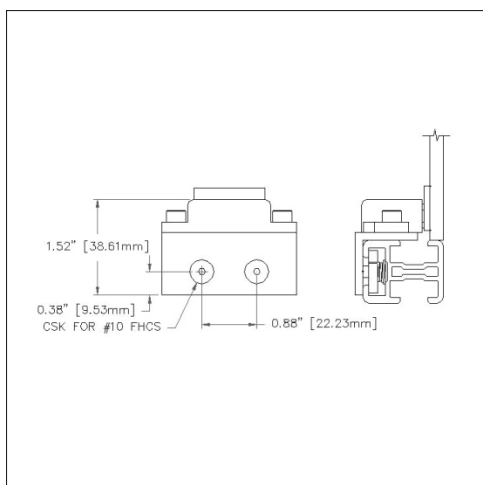
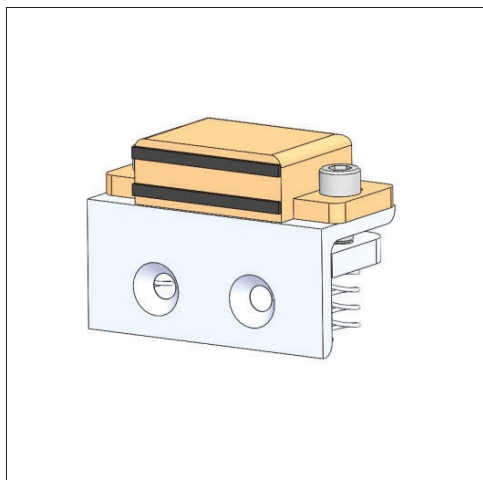
- 0.26 lb [0.12 kg]

HARDWARE RECOMMENDED FOR ASSEMBLY:

- 1/4" - 20 x 1/2" Socket Head Cap Screws (25C50KCSS), 4 each.
- Double Square Nuts (H010072100), 4 each.
- 5/16" - 18 x 5/16" Socket Set Screws (31C31KKCS), 4 each.

Assembly Note: This door hinge provides a wider gap between extrusions than the lift off hinges (H080071100 and H080081100).

H080121100 T-Slot Hinge - No Hardware



H080091100 Magnetic Catch Assembly

TYPICAL USE:

- To latch panels in place.

FEATURES:

- Compact and rugged.
- Self-aligning magnets assure full contact and maximum holding power.
- Ten pounds of pull required to break contact between surfaces.

MATERIALS:

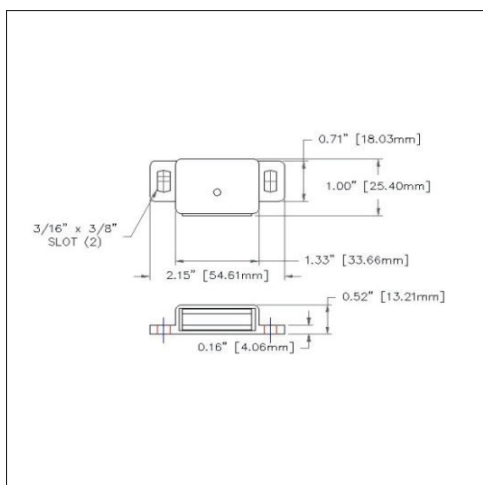
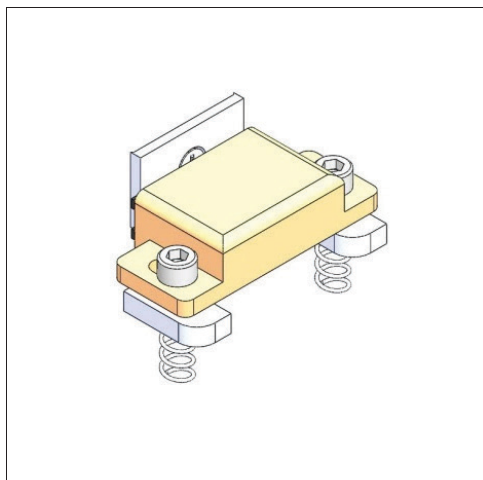
- Body: Plastic.
- Magnetic Poles & Striker Plate: Steel.

WEIGHT:

- 0.08 lb [0.04 kg]

HARDWARE INCLUDED WITH ASSEMBLY:

- Magnet and Striker Plate Set (H085072100), 1 each.
- 10 - 32 Spring Nuts (/G1532), 2 each.
- 10 - 32 x 1/2" Socket Head Cap Screws (10F50KCSS), 2 each.
- #6 x 1/4" Self-tapping Screw (6N25TXFZ), 1 each.



H080091100 Magnetic Catch Assembly

TYPICAL USE:

- To latch panels in place when the Tri-Slot Support Beam is used in a vertical position as shown in the "typical installation" illustration at left.

FEATURES:

- Compact and rugged.
- Self-aligning magnets assure full contact and maximum holding power.
- Ten pounds of pull required to break contact between surfaces.

MATERIALS:

- Body: Plastic.
- Magnetic Poles & Striker Plate: Steel.
- Mounting Plate: Aluminum.

WEIGHT:

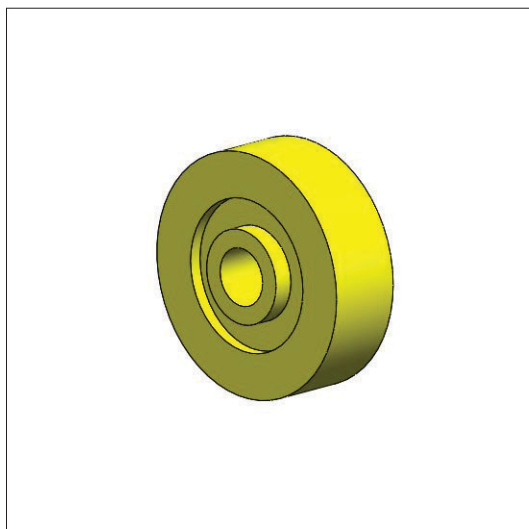
- 0.18 lb [0.08 kg]

HARDWARE INCLUDED WITH ASSEMBLY:

- Magnet and Striker Plate Set (H085072100), 1 each.
- 10 - 32 Spring Nuts (/G1532), 2 each.
- 10 - 32 x 1/2" Socket Head Cap Screws (10F50KCSS), 2 each.
- #6 x 1/4" Self-tapping Screw (6N25TXFZ), 1 each.
- 10 - 32 x 1/4" Socket Head Cap Screws (10F25KFCS), 2 each.
- Mounting Angle Bracket (B010082100), 1 each.

Note: The standard Magnetic Catch Assembly (H0800911) can be used with the Tri-Slot Support Beam if the catch is mounted on the long side of the beam.

H030192101 Covered Roller



TYPICAL USE

- Cover Roller used on the Assembly of a Pallet.

FEATURES:

- Expects 3/8 and 10mm Flat Head Screw.

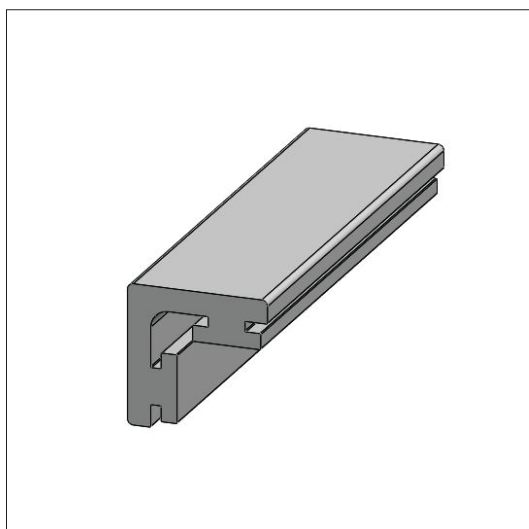
MATERIAL:

- Urethane, Sealed/Permanet Lubricated Sealed Ball Bearing.

HARDWARE RECOMMENDED FOR ASSEMBLY:

- M12 X 1.75 X 25mm Flat Head Cap Screw,
1 each.

E050202100 Corner Extrusion



TYPICAL USE:

- Slide surface, Guide rail.

FEATURES:

- Slide on corner of any support beam.

MATERIAL:

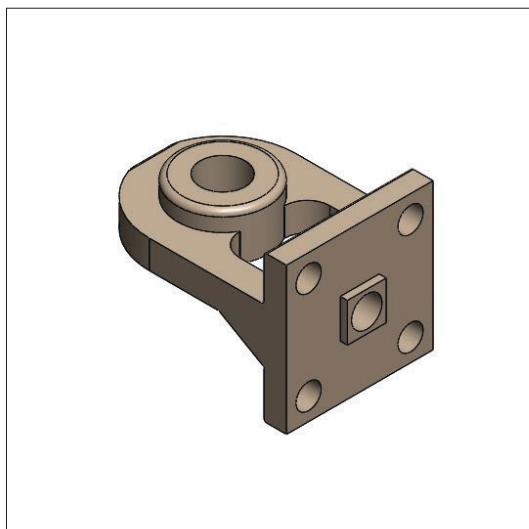
- High Density Polyethylene (UHMW).

STANDARD LENGTH:

- 120 Inches.

B070052100

1x1 End Bracket



FEATURES:

- Can attach to 1x1 Beam with self tapping torx screws.
- Can attach by using a 3/4" x 7/8 T-Bolt.
- Can be used as rollers by attaching a covered roller to it (H0301921).

MATERIAL:

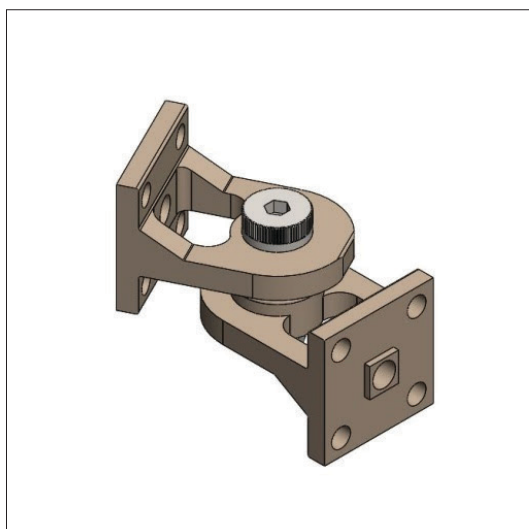
- Die Cast Zinc.

HARDWARE RECOMMENDED FOR ASSEMBLY:

- 1/4" - 20 x 1 Torx Screw.
- 3/4" x 7/8 T-Bolt.
- 1/2"-13 x 7/8 Flat Head Cap Screw.

B070051100

1x1 End Bracket Swivel Assembly



FEATURES:

- Can attach to 1x1 Beam with self tapping torx screws.
- Can attach by using a 3/4" x 7/8 T-Bolt.

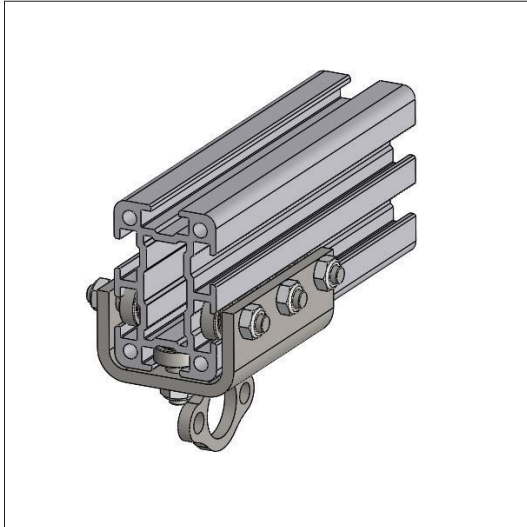
MATERIAL:

- Die Cast Zinc.

HARDWARE RECOMMENDED FOR ASSEMBLY:

- 1/4" - 20 x 1 Torx Screw.
- 3/4" x 7/8 T-Bolt.

H130031101 Tool Trolley Assembly



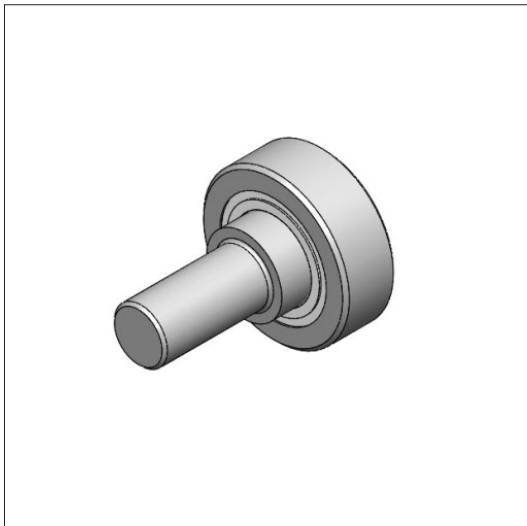
FEATURES:

- Mounting of tool balancers.
- Fixtures that need to move.

MATERIAL:

- Steel.

H130021102 Cam Roller

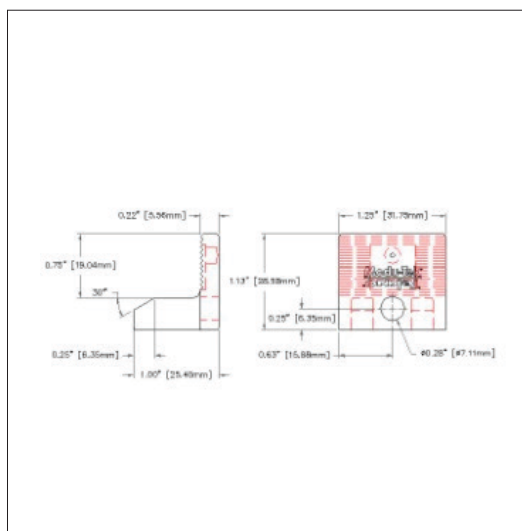
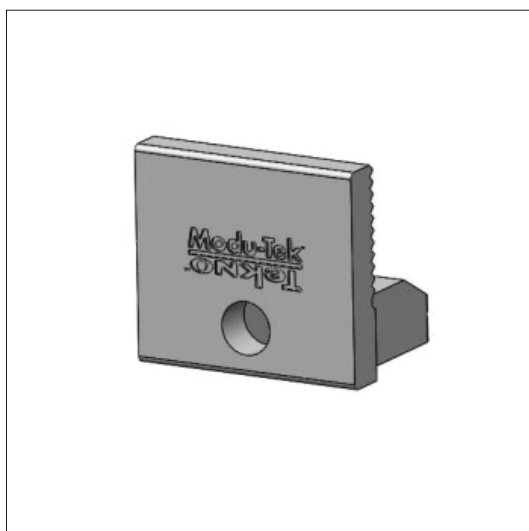


MATERIAL:

- Hardened Steel Sealed/Permanent Ball Bearing Lubrication.

B049011100

Panel Clamp Assembly

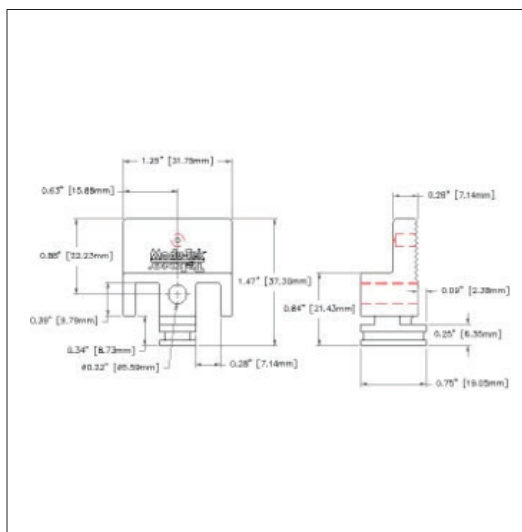
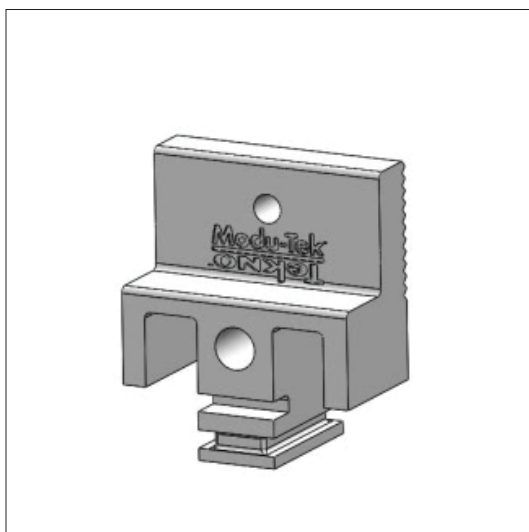


TYPICAL USE:

- To attach expanded metal panel to support beam extrusions in guarding enclosures.

RECOMMENDED HARDWARE:

- Pan Head Torx 1/4"-20.



TYPICAL USE:

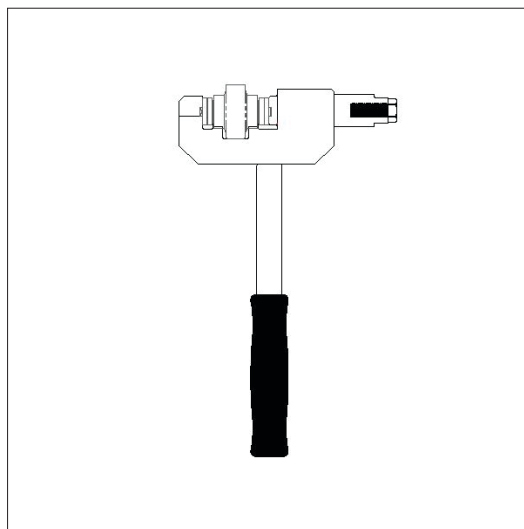
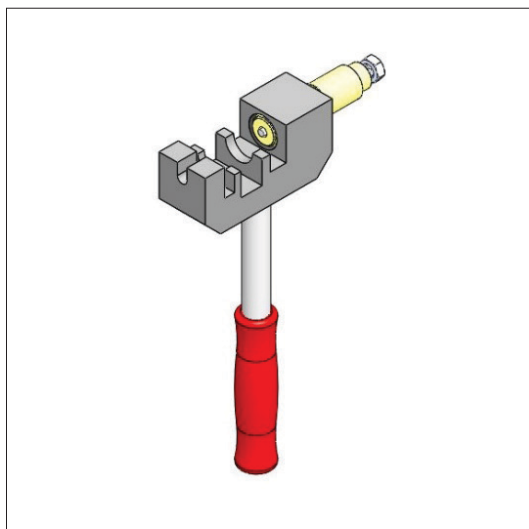
- To attach polycarbonate sheeting to support beam extrusions in guarding enclosures.

RECOMMENDED HARDWARE:

- Pan Head Torx 1/4"-20.

T040011100

Chain Break Tool, Narrow



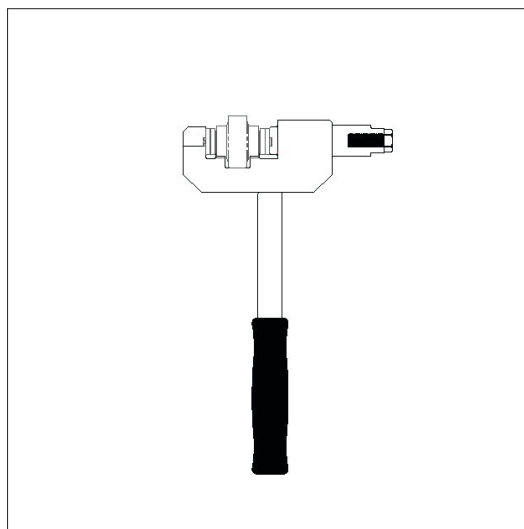
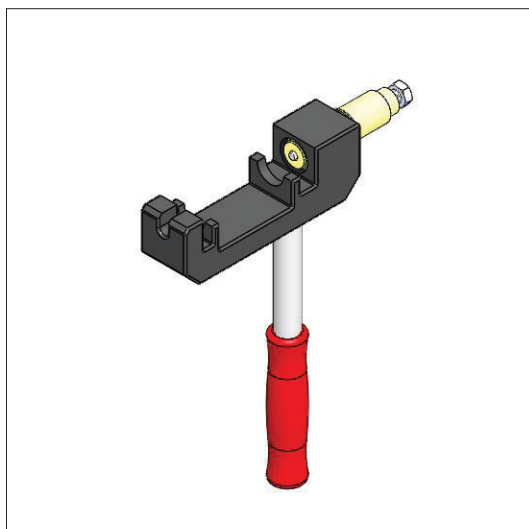
Chain break tool, 2060, narrow – Used to quickly and easily break Tekno's 2060 conveyor chain without causing damage to the rollers, conveyor or any other part of the conveyor.

Simply clamp the tool around the desired link and using a 9/16" wrench or socket drive the pin out to break the chain.

For a full detailed video of how to use this tool visit our website.

T040021100

Chain Break Tool, Wide



Chain break tool, 2060, wide – Used to quickly and easily break Tekno's 2060 conveyor chain without causing damage to the rollers, conveyor or any other part of the conveyor.

Simply clamp the tool around the desired link and using a 9/16" wrench or socket drive the pin out to break the chain.

For a full detailed video of how to use this tool visit our website.