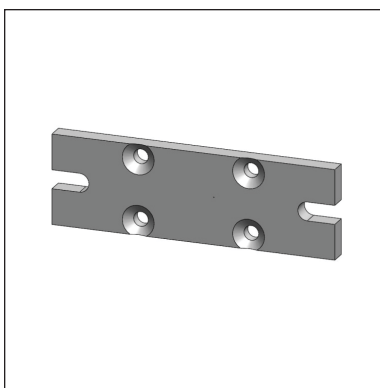


ADAPTER/JOINING PLATES

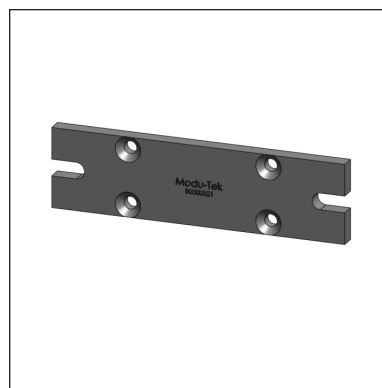




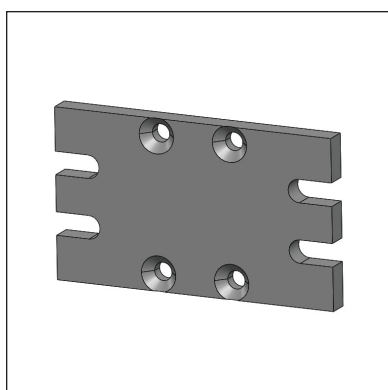
1 x 1 Slot End Adapter Plate
B030012100
Page 41



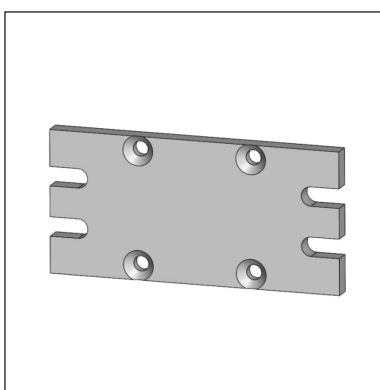
1 x 2 Slot End Adapter Plate
B030022100
Page 42



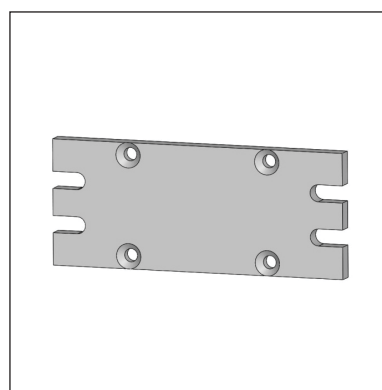
1 x 3 Slot End Adapter Plate
B030032100
Page 43



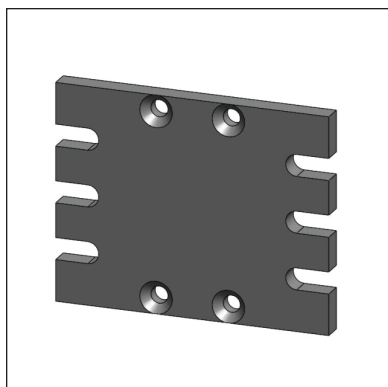
2 x 1 Slot End Adapter Plate
B030042100
Page 44



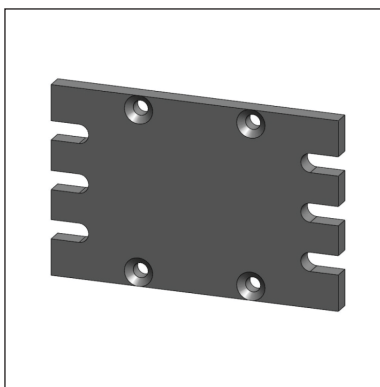
2 x 2 Slot End Adapter Plate
B030052100
Page 45



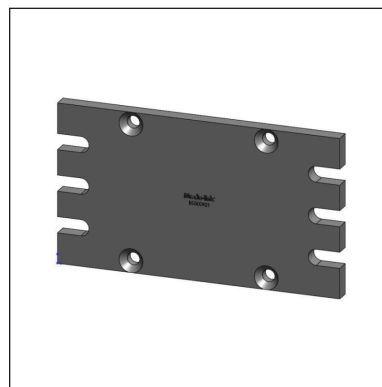
2 x 3 Slot End Adapter Plate
B030062100
Page 46



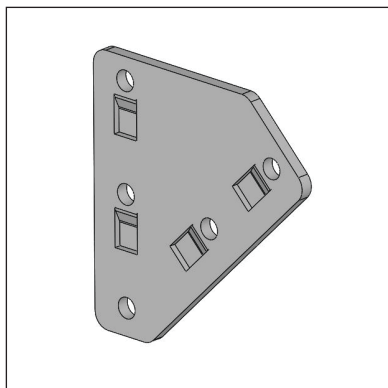
3 x 1 Slot End Adapter Plate
B030072100
Page 47



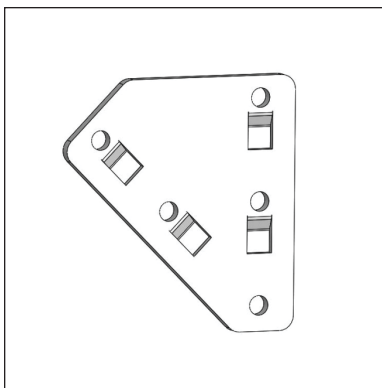
3 x 2 Slot End Adapter Plate
B030082100
Page 48



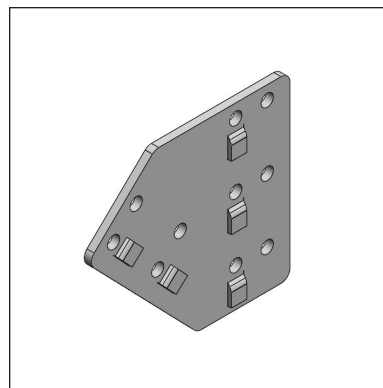
3 x 3 Slot End Adapter Plate
B030092100
Page 49



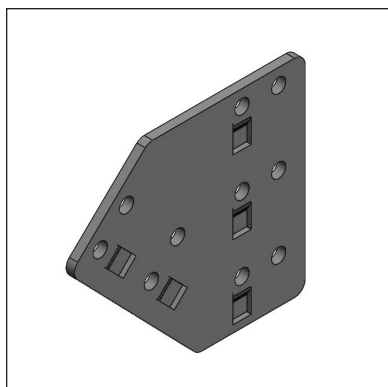
1-Slot 45° Right Hand Corner
Joining Plate
B050052100
Page 50



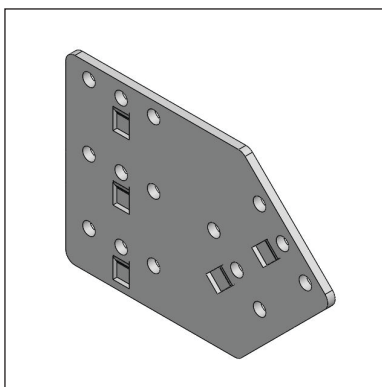
1-Slot 45° Left Hand Corner
Joining Plate
B050062100
Page 51



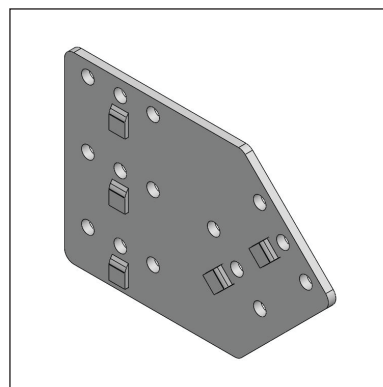
2-Slot 45° Right Hand Corner
Joining Plate
B050072100
Page 52



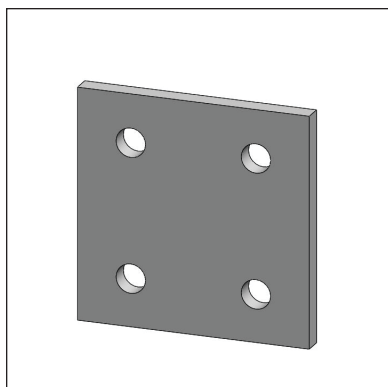
2-Slot 45° Left Hand Corner
Joining Plate
B050082100
Page 53



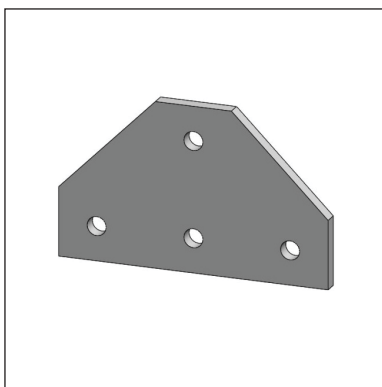
3-Slot 45° Right Corner
Joining Plate
B050092100
Page 54



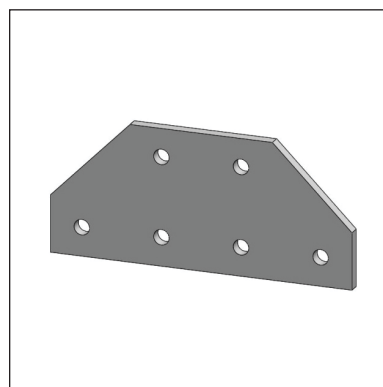
3-Slot 45° Left Corner Joining Plate
B050102100
Page 55



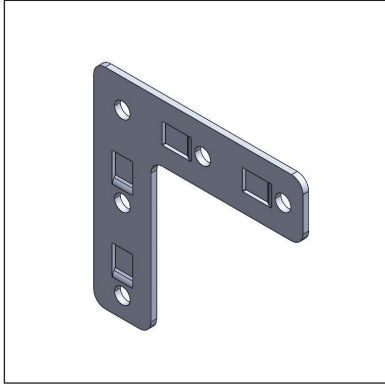
1 x 1 Joining Plate
B050112100
Page 56



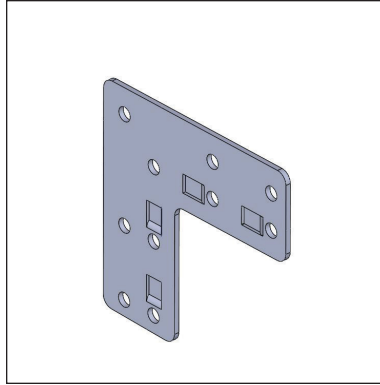
1 x 1 (4-Hole Tee) Joining Plate
B050122100
Page 57



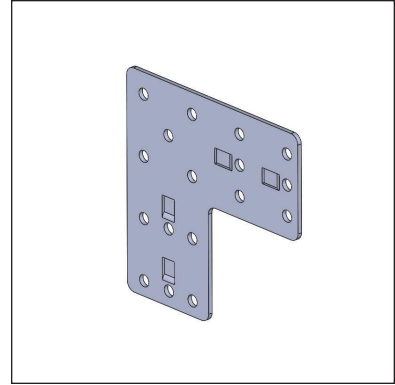
1 x 1 (6-Hole Tee) Joining Plate
B050132100
Page 58



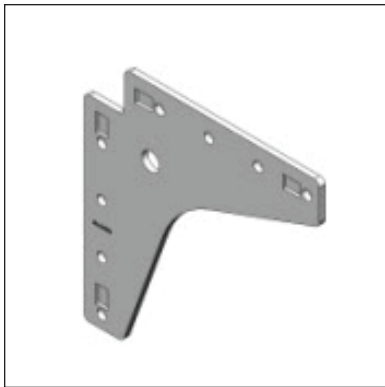
1-Slot 90° Corner Joining Plate
B050012100
Page 59



2-Slot 90° Corner Joining Plate
B050022100
Page 60



3-Slot 90° Corner Joining Plate
B050032100
Page 61



1-Slot Heavy Duty Corner
Joining Plate
B050042102
Page 62



B030012100
1 x 1 Slot End Adapter Plate

TYPICAL USE:

- To mount 1 x 1, 1 x 2, or 1 x 3 Slot Support Beams perpendicularly to 1 x 1 Slot Support Beams in cross beam applications.

FEATURES:

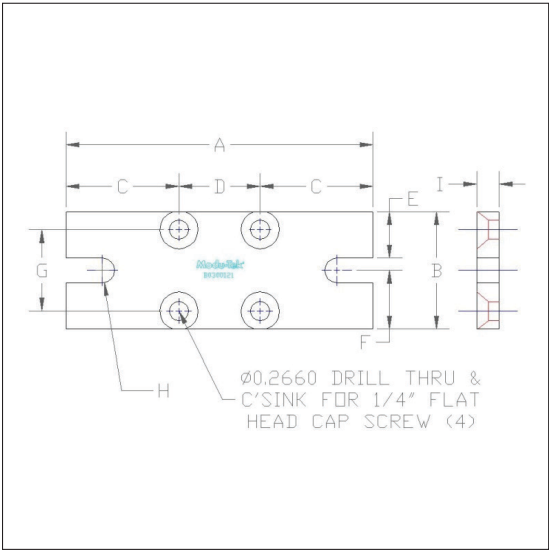
- Provides alignment for two perpendicular support beams.
- 1/4" - 20 x 1 1/4" Flat Head Cap Screws secure the end of a 1 x 1 Slot Support Beam to the bracket on surface "A".
- T-bolts or Hex Head Cap Screws secure surface "B" of the bracket to the side of the mating 1 x 1, 1 x 2, or 1 x 3 Slot Support Beam.

MATERIAL:

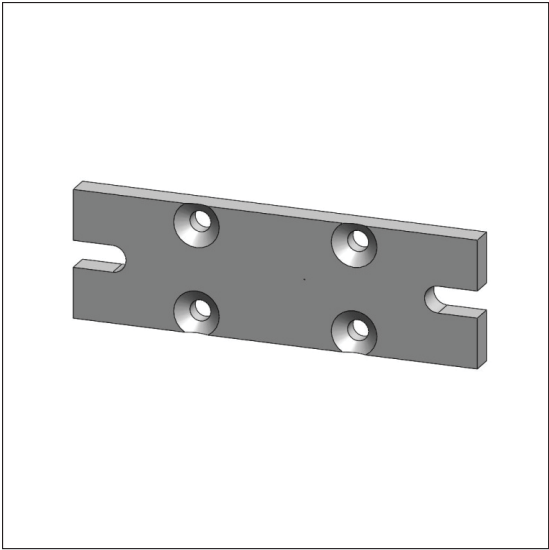
- Mild Steel, Zinc Plated.

WEIGHT:

- 0.19 lb [0.09 kg]



	Inches (in.)	Millimeters (mm)
A	4.25	107.95
B	1.63	41.28
C	1.56	39.69
D	1.13	28.58
E	0.64	16.26
F	0.81	20.57
G	1.13	28.58
H	R 0.17	R 4.32
I	0.31	7.94



B030022100
1 x 2 Slot End Adapter Plate

TYPICAL USE:

- To mount 1 x 1, 1 x 2, or 1 x 3 Slot Support Beams perpendicularly to 1 x 2 Slot Support Beams in cross beam applications.

FEATURES:

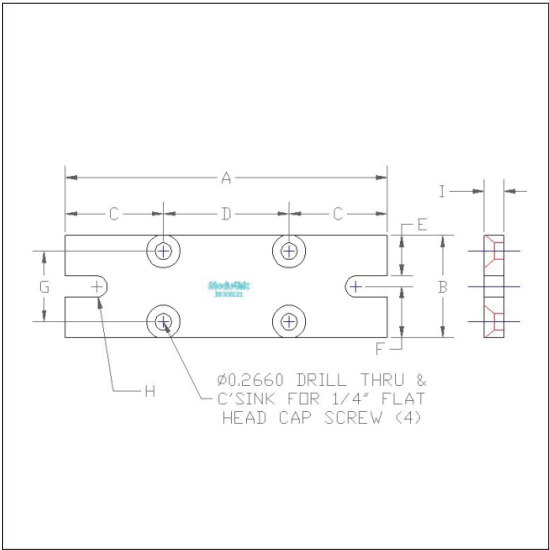
- Provides alignment for two perpendicular support beams.
- 1/4" - 20 x 1 1/4" Flat Head Cap Screws secure the end of a 1 x 2 Slot Support Beam to the bracket on surface "A".
- T-bolts or Hex Head Cap Screws secure surface "B" of the bracket to the side of the mating 1 x 1, 1 x 2, or 1 x 3 Slot Support Beam.

MATERIAL:

- Mild Steel, Zinc Plated.

WEIGHT:

- 0.24 lb [0.11 kg]



	Inches (in.)	Millimeters (mm)
A	5.13	130.30
B	1.63	41.28
C	1.56	39.69
D	2.00	50.8
E	0.64	16.26
F	0.81	20.57
G	1.13	28.58
H	R 0.17	R 4.32
I	0.31	7.94



B030032100
1 x 3 Slot End Adapter Plate

TYPICAL USE:

- To mount 1 x 1, 1 x 2, or 1 x 3 Slot Support Beams perpendicularly to 1 x 3 Slot Support Beams in cross beam applications.

FEATURES:

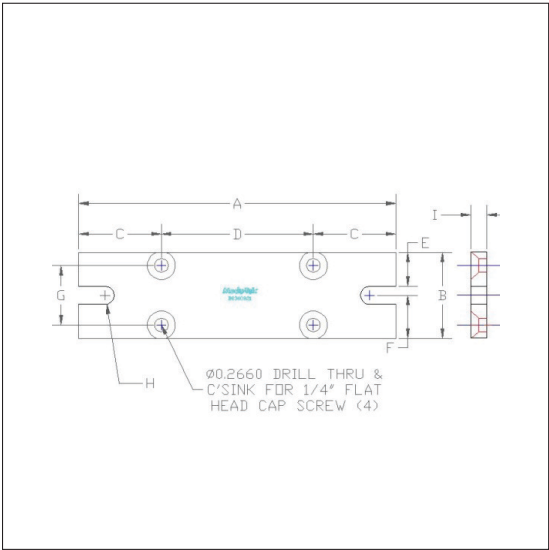
- Provides alignment for two perpendicular support beams.
- 1/4" - 20 x 1 1/4" Flat Head Cap Screws secure the end of a 1 x 3 Slot Support Beam to the bracket on surface "A".
- T-bolts or Hex Head Cap Screws secure surface "B" of the bracket to the side of the mating 1 x 1, 1 x 2, or 1 x 3 Slot Support Beam.

MATERIAL:

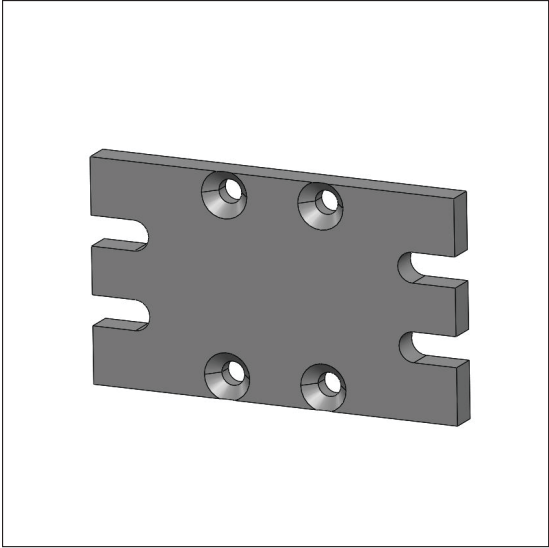
- Mild Steel, Zinc Plated.

WEIGHT:

- 0.29 lb [0.13 kg]



	Inches (in.)	Millimeters (mm)
A	6.00	152.40
B	1.63	41.28
C	1.56	39.69
D	2.88	73.15
E	0.64	16.26
F	0.81	20.57
G	1.13	28.58
H	R 0.17	R 4.32
I	0.31	7.94



B030042100
2 x 1 Slot End Adapter Plate

TYPICAL USE:

- To mount 1 x 2, 2 x 2, or 2 x 3 Slot Support Beams perpendicularly to 1 x 2 Slot Support Beams in cross beam applications.

FEATURES:

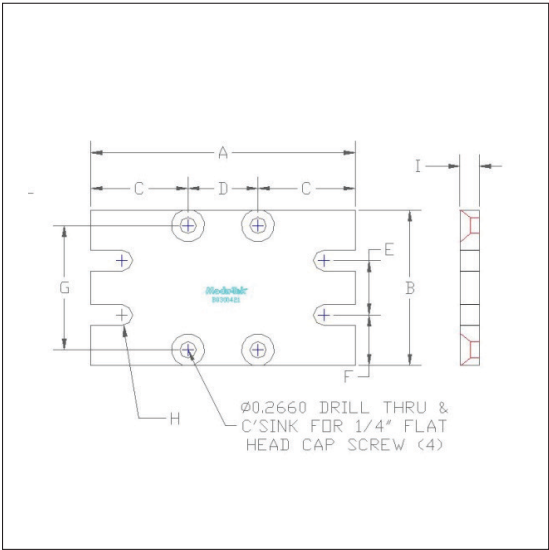
- Provides alignment for two perpendicular support beams.
- 1/4" - 20 x 1 1/4" Flat Head Cap Screws secure the end of a 1 x 2 Slot Support Beam to the bracket on surface "A".
- T-bolts or Hex Head Cap Screws secure surface "B" of the bracket to the side of the mating 1 x 2, 2 x 2, or 2 x 3 Slot Support Beam.

MATERIAL:

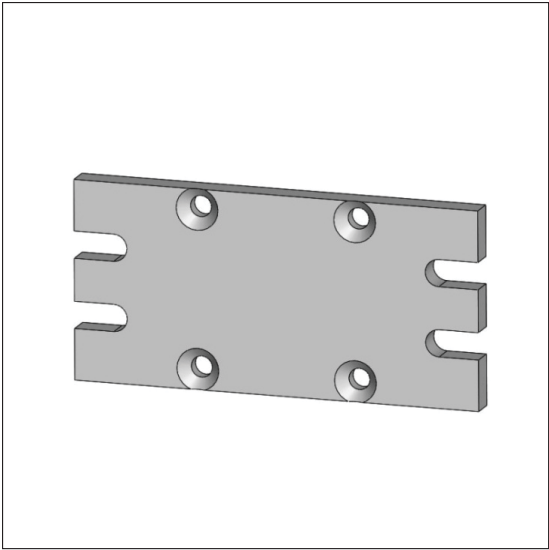
- Mild Steel, Zinc Plated.

WEIGHT:

- 0.30 lb [0.14 kg]



	Inches (in.)	Millimeters (mm)
A	4.25	107.95
B	2.50	63.50
C	1.56	39.69
D	1.13	28.70
E	0.88	22.35
F	0.81	20.57
G	2.00	50.80
H	R 0.17	R 4.32
I	0.31	7.94



B030052100
2 x 2 Slot End Adapter Plate

TYPICAL USE:

- To mount 1 x 2, 2 x 2, or 2 x 3 Slot Support Beams perpendicularly to 2 x 2 Slot Support Beams in cross beam applications.

FEATURES:

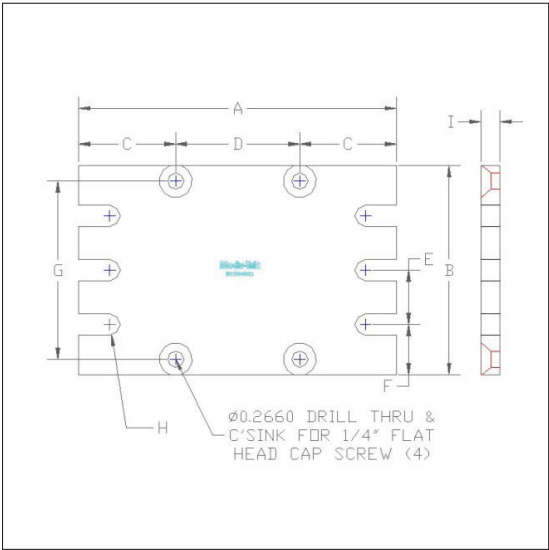
- Provides alignment for two perpendicular support beams.
- 1/4" - 20 x 1 1/4" Flat Head Cap Screws secure the end of a 2 x 2 Slot Support Beam to the bracket on surface "A".
- T-bolts or Hex Head Cap Screws secure surface "B" of the bracket to the side of the mating 1 x 2, 2 x 2, or 2 x 3 Slot Support Beam.

MATERIAL:

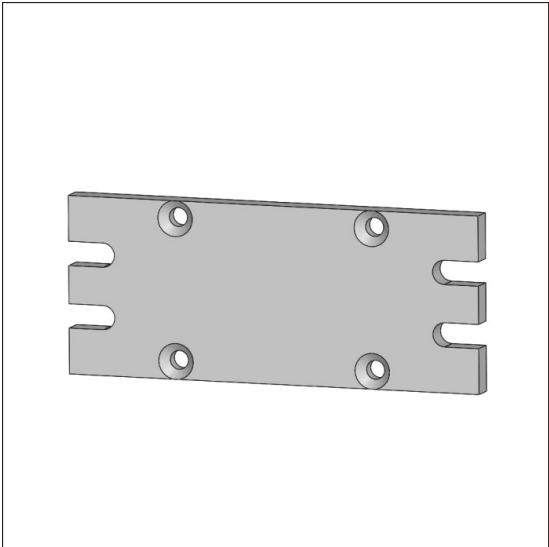
- Mild Steel, Zinc Plated.

WEIGHT:

- 0.38 lb [0.17 kg]



	Inches (in.)	Millimeters (mm)
A	5.13	130.30
B	2.50	63.50
C	1.56	39.62
D	2.00	50.80
E	0.88	22.35
F	0.81	20.57
G	2.00	50.80
H	Ø 0.34	Ø 8.64
I	0.31	7.94



B030062100
2 x 3 Slot End Adapter Plate

TYPICAL USE:

- To mount 1 x 2, 2 x 2, or 2 x 3 Slot Support Beams perpendicularly to 2 x 3 Slot Support Beams in cross beam applications.

FEATURES:

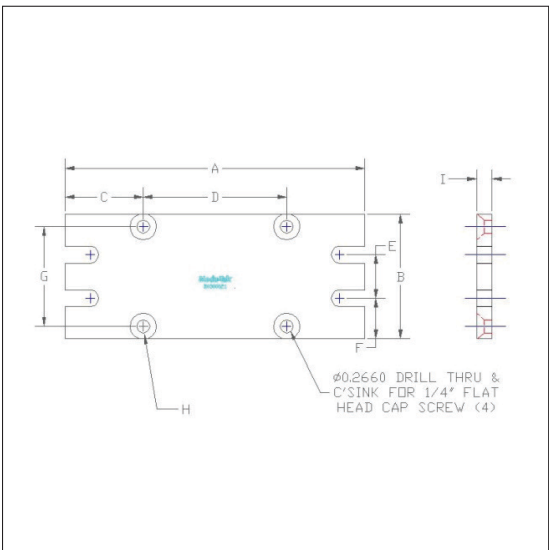
- Provides alignment for two perpendicular support beams.
- 1/4" - 20 x 1 1/4" Flat Head Cap Screws secure the end of a 2 x 3 Slot Support Beam to the bracket on surface "A".
- T-bolts or Hex Head Cap Screws secure surface "B" of the bracket to the side of the mating 1 x 2, 2 x 2, or 2 x 3 Slot Support Beam.

MATERIAL:

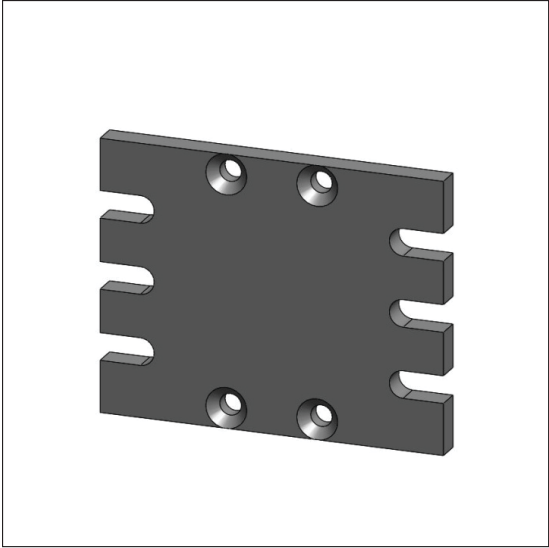
- Mild Steel, Zinc Plated.

WEIGHT:

- 0.45 lb [0.20 kg]



	Inches (in.)	Millimeters (mm)
A	6.00	152.40
B	2.50	63.50
C	1.56	39.62
D	2.88	73.15
E	0.88	22.35
F	0.81	20.57
G	2.00	50.80
H	Ø 0.34	Ø 8.64
I	0.31	7.94



B030072100
3 x 1 Slot End Adapter Plate

TYPICAL USE:

- To mount 1 x 3, 2 x 3, or 3 x 3 Slot Support Beams perpendicularly to 1 x 3 Slot Support Beams in cross beam applications.

FEATURES:

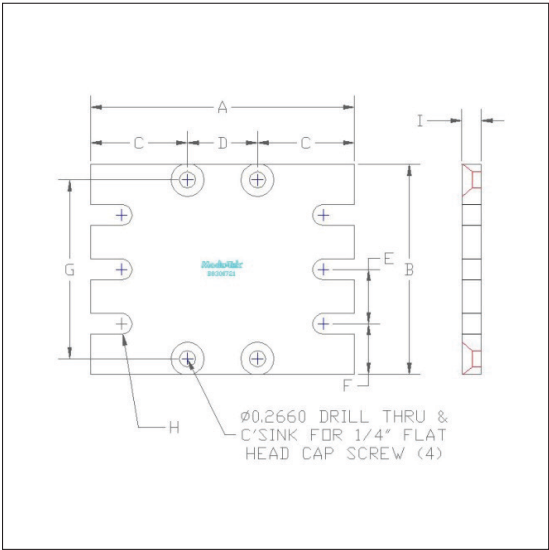
- Provides alignment for two perpendicular support beams.
- 1/4" - 20 x 1 1/4" Flat Head Cap Screws secure the end of a 1 x 3 Slot Support Beam to the bracket on surface "A".
- T-bolts or Hex Head Cap Screws secure surface "B" of the bracket to the side of the mating 1 x 3, 2 x 3, or 3 x 3 Slot Support Beam.

MATERIAL:

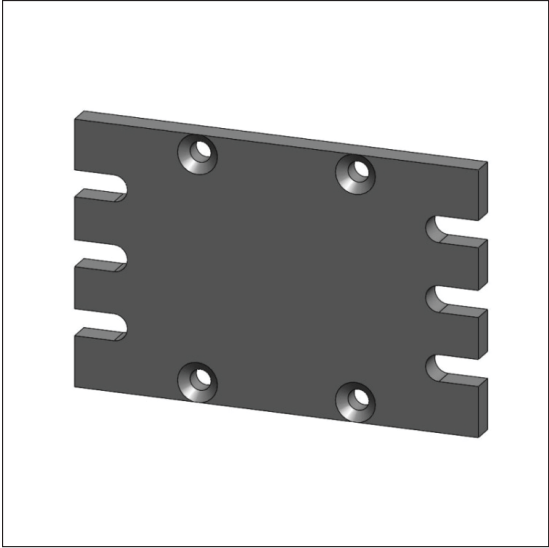
- Mild Steel, Zinc Plated.

WEIGHT:

- 0.41 lb [0.18 kg]



	Inches (in.)	Millimeters (mm)
A	4.25	107.95
B	3.38	85.85
C	1.56	39.69
D	1.13	28.70
E	0.88	22.35
F	0.81	20.57
G	2.00	50.80
H	R 0.17	R 4.32
I	0.31	7.94



B030082100
3 x 2 Slot End Adapter Plate

TYPICAL USE:

- To mount 1 x 3, 2 x 3, or 3 x 3 Slot Support Beams perpendicularly to 2 x 3 Slot Support Beams in cross beam applications.

FEATURES:

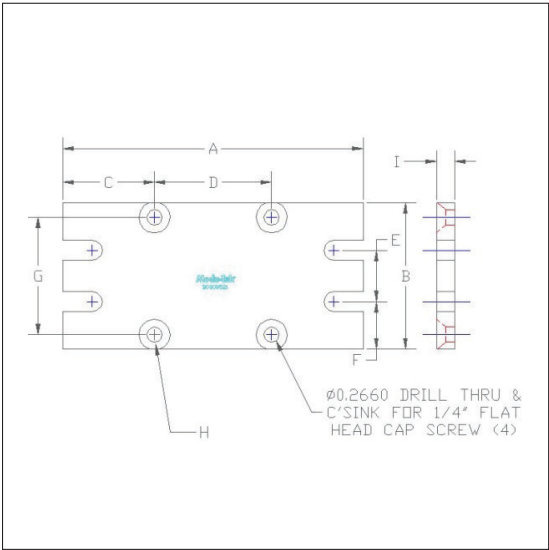
- Provides alignment for two perpendicular support beams.
- 1/4" - 20 x 1 1/4" Flat Head Cap Screws secure the end of a 2 x 3 Slot Support Beam to the bracket on surface "A".
- T-bolts or Hex Head Cap Screws secure surface "B" of the bracket to the side of the mating 1 x 3, 2 x 3, or 3 x 3 Slot Support Beam.

MATERIAL:

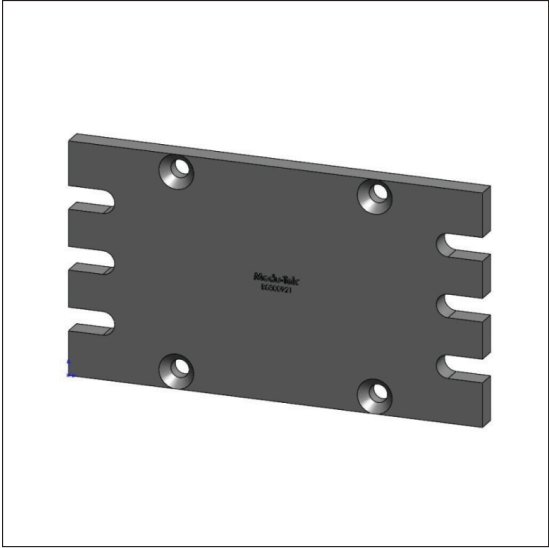
- Mild Steel, Zinc Plated.

WEIGHT:

- 0.50 lb [0.23 kg]



	Inches (in.)	Millimeters (mm)
A	5.13	130.30
B	3.38	85.85
C	1.56	39.62
D	2.00	50.80
E	0.88	22.35
F	0.81	20.57
G	2.00	50.80
H	R 0.17	R 4.32
I	0.31	7.94



B030092100
3 x 3 Slot End Adapter Plate

TYPICAL USE:

- To mount 1 x 3, 2 x 3, or 3 x 3 Slot Support Beams perpendicularly to 3 x 3 Slot Support Beams in cross beam applications.

FEATURES:

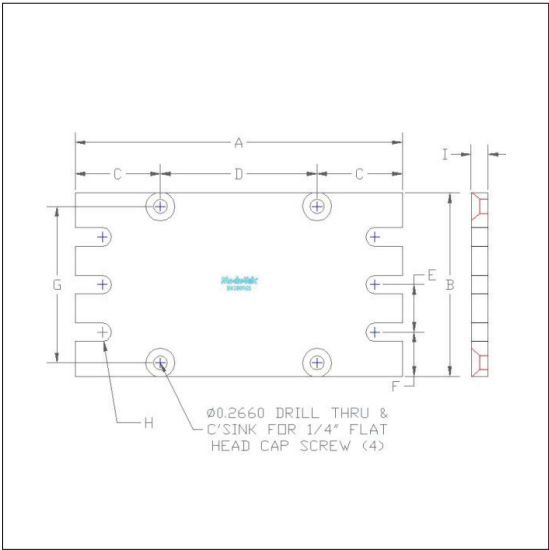
- Provides alignment for two perpendicular support beams.
- 1/4" - 20 x 1 1/4" Flat Head Cap Screws secure the end of a 3 x 3 Slot Support Beam to the bracket on surface "A".
- T-bolts or Hex Head Cap Screws secure surface "B" of the bracket to the side of the mating 1 x 3, 2 x 3, or 3 x 3 Slot Support Beam.

MATERIAL:

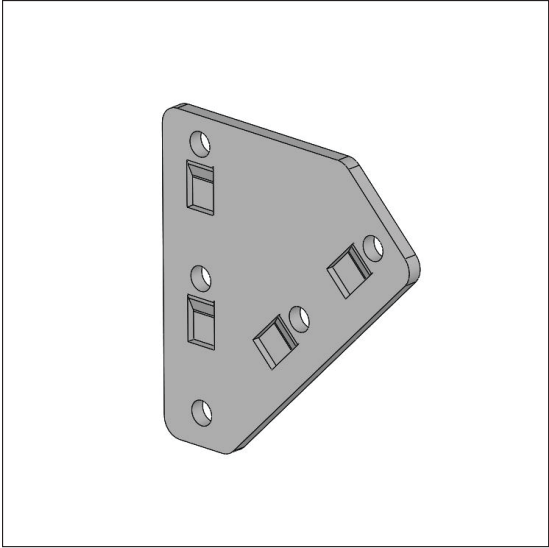
- Mild Steel, Zinc Plated.

WEIGHT:

- 0.60 lb [0.27 kg]



	Inches (in.)	Millimeters (mm)
A	6.00	152.40
B	3.38	85.85
C	1.56	39.62
D	2.88	73.15
E	0.88	22.35
F	0.81	20.57
G	2.00	50.80
H	R 0.17	R 4.32
I	0.31	7.94



B050052100
1-Slot 45° Right Hand Corner
Joining Plate

TYPICAL USE:

- To connect 1 x 1, 1 x 2, and 1 x 3 Slot Support Beams to one another at a 45° angle.

FEATURES:

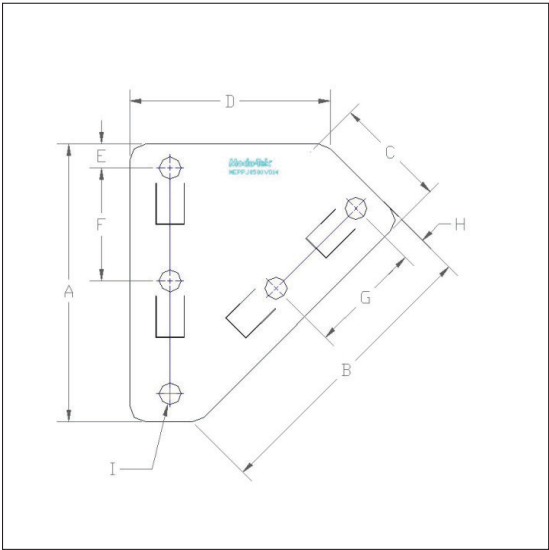
- Provides alignment of two support beams at a 45° angle.
- Recessed tabs allow for the accurate positioning into beam T-slots to ensure a correct joint angle.

MATERIAL:

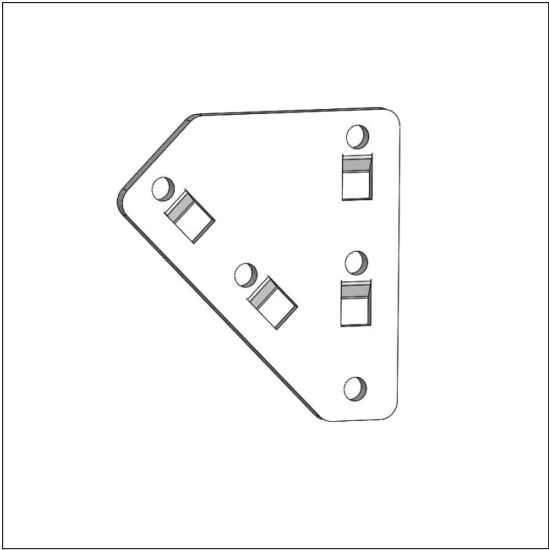
- Mild Steel, Zinc Plated.

WEIGHT:

- 0.41 lb [0.18 kg]



	Inches (in.)	Millimeters (mm)
A	4.31	109.47
B	4.50	114.30
C	1.74	44.20
D	3.10	78.74
E	0.38	9.65
F	1.75	44.45
G	1.75	44.45
H	0.38	9.65
I	Ø 0.34	Ø 8.64



B050062100
1-Slot 45° Left Hand Corner
Joining Plate

TYPICAL USE:

- To connect 1 x 1, 1 x 2, and 1 x 3 Slot Support Beams to one another at a 45° angle.

FEATURES:

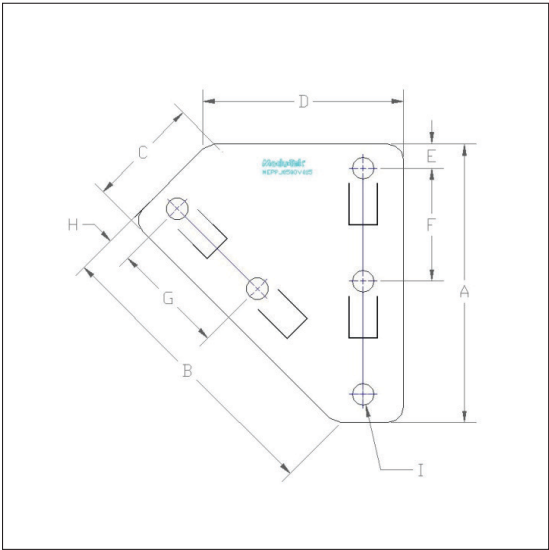
- Provides alignment of two support beams at a 45° angle.
- Recessed tabs allow for the accurate positioning into beam T-slots to ensure a correct joint angle.

MATERIAL:

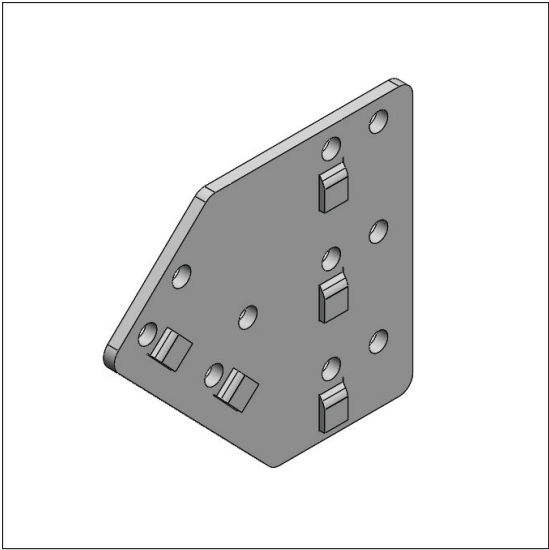
- Mild Steel, Zinc Plated.

WEIGHT:

- 0.41 lb [0.18 kg]



	Inches (in.)	Millimeters (mm)
A	4.31	109.47
B	4.50	114.30
C	1.74	44.20
D	3.10	78.74
E	0.38	9.65
F	1.75	44.45
G	1.75	44.45
H	0.38	9.65
I	Ø 0.34	Ø 8.64



B050072100
2-Slot 45° Right Hand Corner
Joining Plate

TYPICAL USE:

- To connect 1 x 2, 2 x 2, and 2 x 3 Slot Support Beams to one another at a 45° angle.

FEATURES:

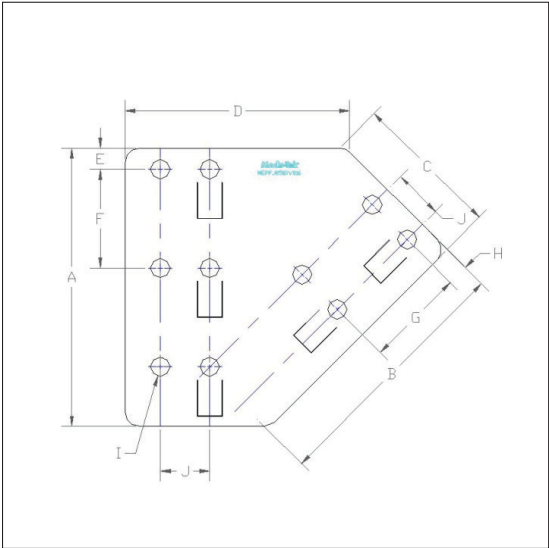
- Provides alignment of two support beams at a 45° angle.
- Recessed tabs allow for the accurate positioning into beam T-slots to ensure a correct joint angle.

MATERIAL:

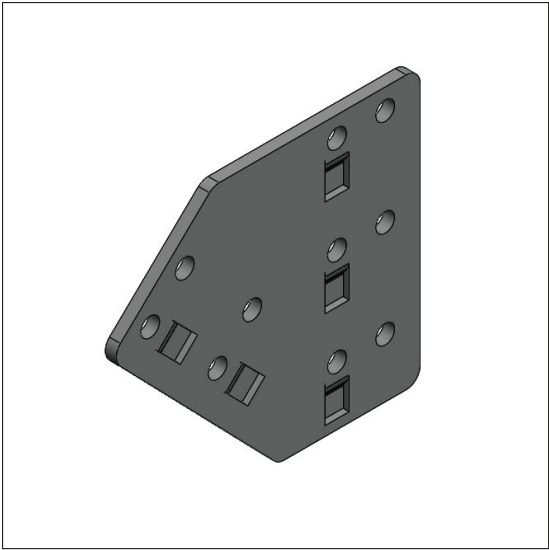
- Mild Steel, Zinc Plated.

WEIGHT:

- 0.69 lb [0.32 kg]



	Inches (in.)	Millimeters (mm)
A	4.93	125.22
B	4.50	114.30
C	1.86	47.24
D	3.97	100.84
E	0.38	9.65
F	1.75	44.45
G	1.75	44.45
H	0.38	9.65
I	Ø 0.34	Ø 8.64
J	0.88	22.35



B050082100
2-Slot 45° Left Hand Corner
Joining Plate

TYPICAL USE:

- To connect 1 x 2, 2 x 2, and 2 x 3 Slot Support Beams to one another at a 45° angle.

FEATURES:

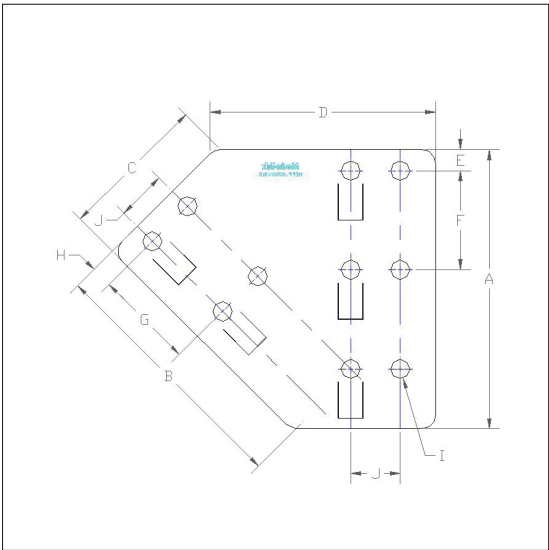
- Provides alignment of two support beams at a 45° angle.
- Recessed tabs allow for the accurate positioning into beam T-slots to ensure a correct joint angle.

MATERIAL:

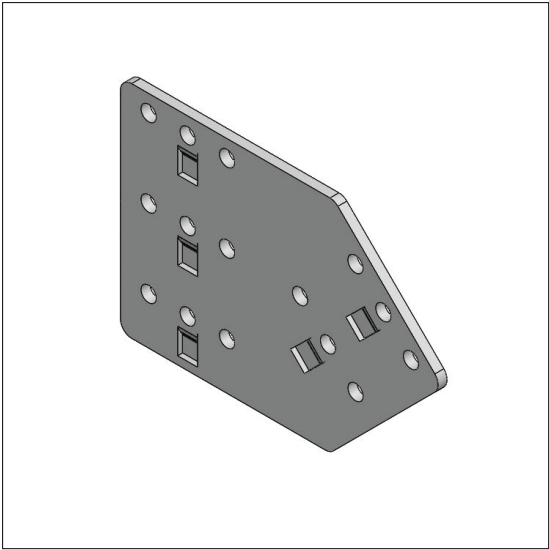
- Mild Steel, Zinc Plated.

WEIGHT:

- 0.69 lb [0.32 kg]



	Inches (in.)	Millimeters (mm)
A	4.93	125.22
B	4.50	114.30
C	1.86	47.24
D	3.97	100.84
E	0.38	9.65
F	1.75	44.45
G	1.75	44.45
H	0.38	9.65
I	Ø 0.34	Ø 8.64
J	0.88	22.35



B050092100
3-Slot 45° Right Hand Corner
Joining Plate

TYPICAL USE:

- To connect 1 x 3, 2 x 3, and 3 x 3 Slot Support Beams to one another at a 45° angle.

FEATURES:

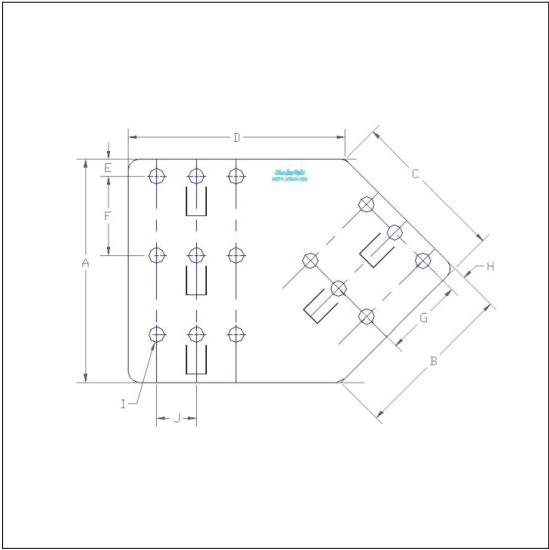
- Provides alignment of two support beams at a 45° angle.
- Recessed tabs allow for the accurate positioning into beam T-slots to ensure a correct joint angle.

MATERIAL:

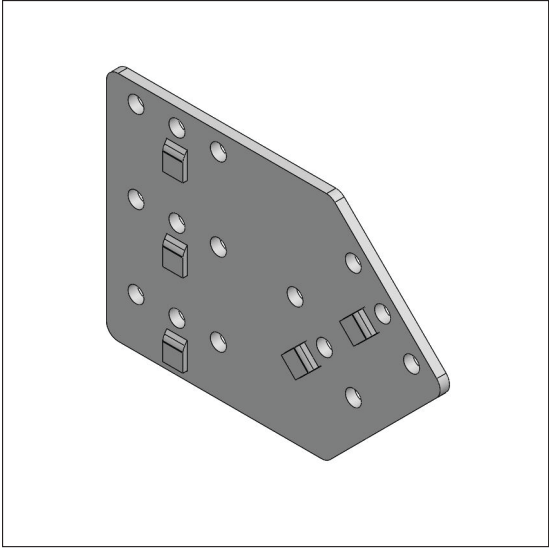
- Mild Steel, Zinc Plated.

WEIGHT:

- 0.95 lb [0.43 kg]



	Inches (in.)	Millimeters (mm)
A	4.93	125.22
B	3.56	90.42
C	3.42	86.87
D	4.78	121.41
E	0.38	9.65
F	1.75	44.45
G	1.75	44.45
H	0.38	9.65
I	Ø 0.34	Ø 8.64
J	0.88	22.35



B050102100
3-Slot 45° Left Hand Corner
Joining Plate

TYPICAL USE:

- To connect 1 x 3, 2 x 3, and 3 x 3 Slot Support Beams to one another at a 45° angle.

FEATURES:

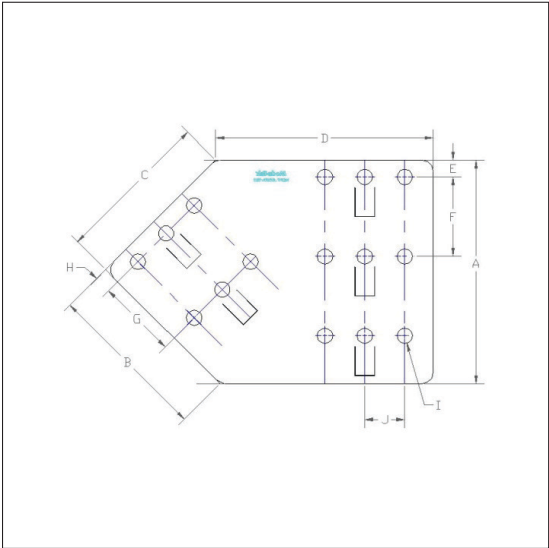
- Provides alignment of two support beams at a 45° angle.
- Recessed tabs allow for the accurate positioning into beam T-slots to ensure a correct joint angle.

MATERIAL:

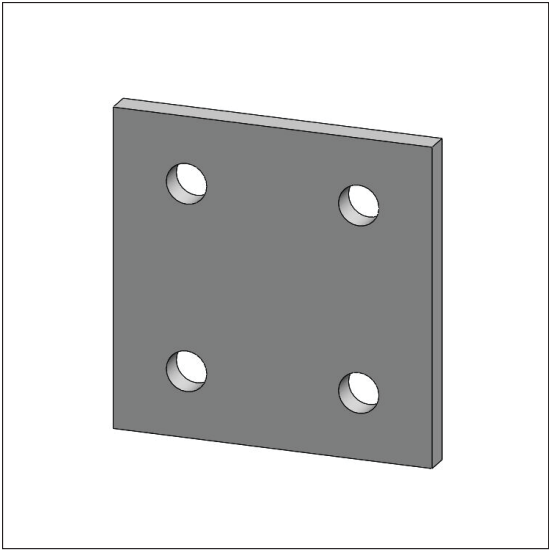
- Mild Steel, Zinc Plated.

WEIGHT:

- 0.95 lb [0.43 kg]



	Inches (in.)	Millimeters (mm)
A	4.93	125.22
B	3.56	90.42
C	3.42	86.87
D	4.78	121.41
E	0.38	9.65
F	1.75	44.45
G	1.75	44.45
H	0.38	9.65
I	Ø 0.34	Ø 8.64
J	0.88	22.35



B050112100
1 x 1 Joining Plate

TYPICAL USE:

- To mount 1 x 1 support beams side by side for guarding applications.

FEATURES:

- T-bolts secure the plate to the support beams for ease of assembly.

MATERIAL:

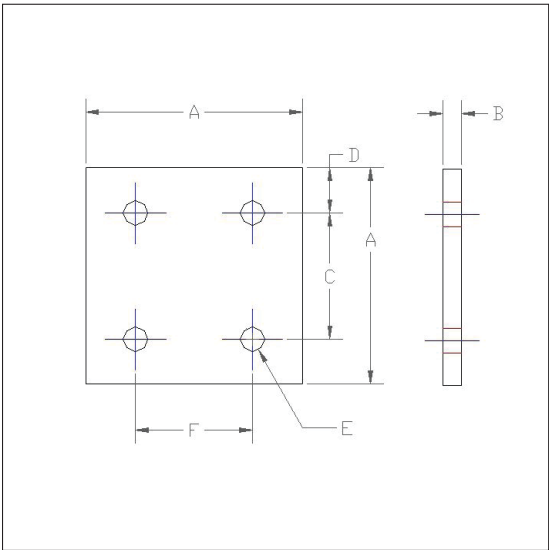
- Clear Anodized Aluminum.

WEIGHT:

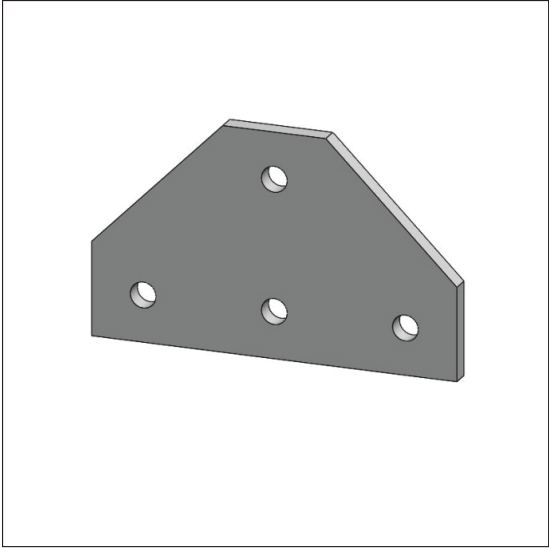
- 0.21 lb [0.10 kg]

**HARDWARE RECOMMENDED
FOR ASSEMBLY:**

- 5/16" - 18 x 3/4" T-bolts (H010012100), 4 each.
- 5/16" - 18 Nylon Insert Flange Lock Nuts (31CNNEFW), 4 each.



	Inches (in.)	Millimeters (mm)
A	3.00	76.20
B	0.25	6.35
C	1.75	44.45
D	0.63	16.00
E	Ø 0.34	Ø 8.64
F	1.62	41.15
G	-	-
H	-	-
I	-	-
J	-	-



B050122100
1 x 1 (4-Hole) Tee Joining Plate

TYPICAL USE:

- To mount 1 x 1 support beams in a Tee configuration for guarding applications.

FEATURES:

- T-bolts secure the plate to the support beams for ease of assembly.

MATERIAL:

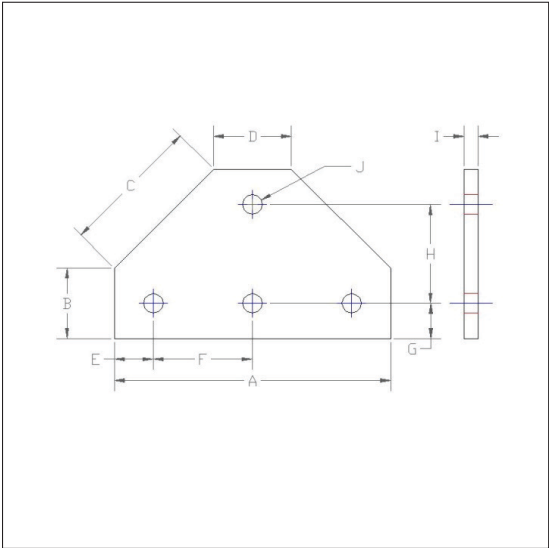
- Clear Anodized Aluminum.

WEIGHT:

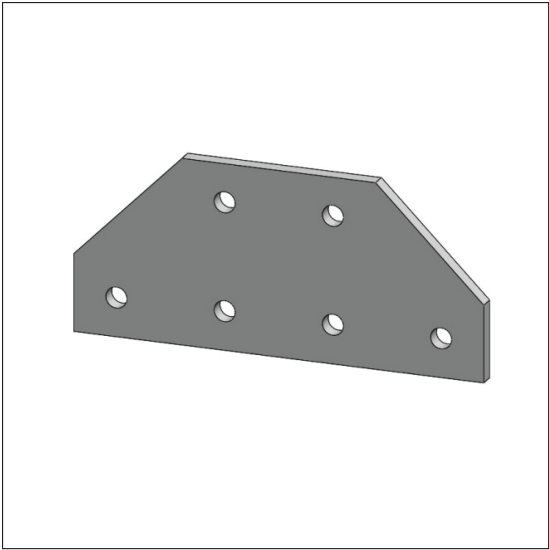
- 0.27 lb [0.12 kg]

**HARDWARE RECOMMENDED
FOR ASSEMBLY:**

- 5/16" - 18 x 3/4" T-bolts (H010012100), 4 each.
- 5/16" - 18 Nylon Insert Flange Lock Nuts (31CNNEFW), 4 each.



	Inches (in.)	Millimeters (mm)
A	4.88	123.95
B	1.25	31.75
C	2.47	62.74
D	1.38	34.93
E	0.69	17.46
F	1.75	44.45
G	0.63	16.00
H	1.75	44.45
I	0.25	6.35
J	Ø 0.34	Ø 8.64



B050132100
1 x 1 (6-Hole) Tee Joining Plate

TYPICAL USE:

- To mount 1 x 1 support beams side by side for guarding applications.

FEATURES:

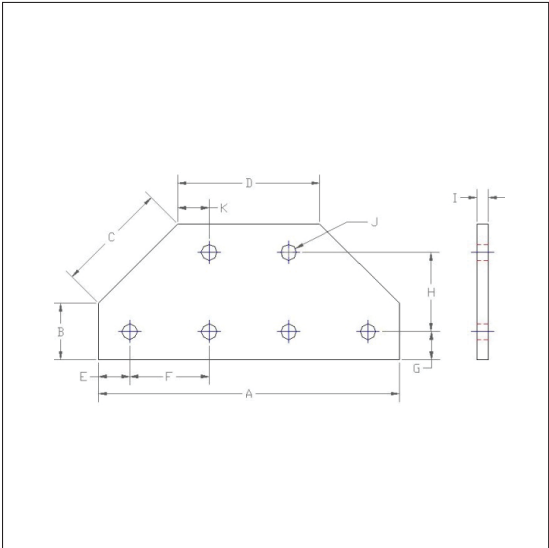
- T-bolts secure the plate to the support beams for ease of assembly.

MATERIAL:

- Clear Anodized Aluminum.

WEIGHT:

- 0.39 lb [0.18 kg]



	Inches (in.)	Millimeters (mm)
A	6.63	168.28
B	1.25	31.75
C	2.47	62.74
D	3.13	79.50
E	0.69	17.46
F	1.75	44.45
G	0.63	16.00
H	1.75	44.45
I	0.25	6.35
J	Ø 0.34	Ø 8.64
K	0.69	17.46



B050012100
1-Slot 90° Corner Joining Plate

TYPICAL USE:

- To connect 1 x 1, 1 x 2, and 1 x 3 Slot Support Beams to one another at a perpendicular (90°) angle.

FEATURES:

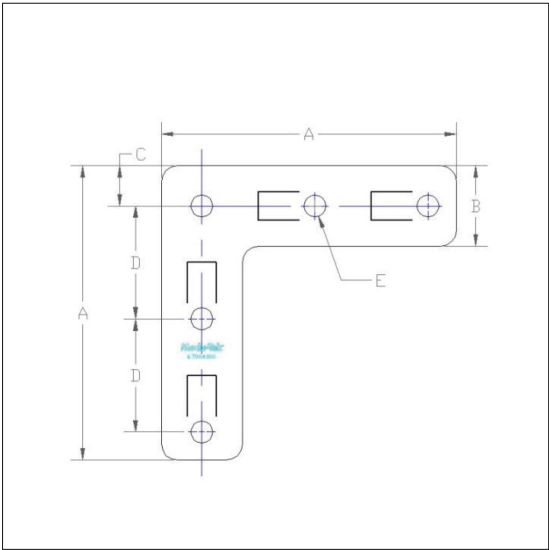
- Recessed tabs allow for the accurate positioning into beam T-slots to ensure squareness of the joint.

MATERIAL:

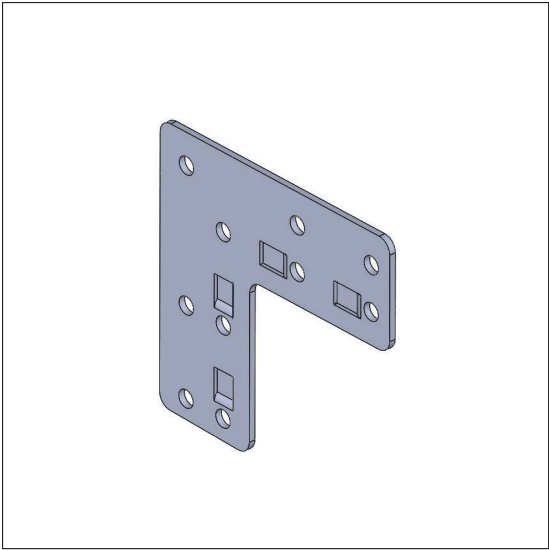
- Mild Steel, Zinc Plated.

WEIGHT:

- 0.32 lb [0.14 kg]



	Inches (in.)	Millimeters (mm)
A	4.56	115.82
B	1.25	31.75
C	0.63	16.00
D	1.75	44.45
E	Ø 0.34	Ø 8.64
F	–	–
G	–	–
H	–	–
I	–	–



B050022100
2-Slot 90° Corner Joining Plate

TYPICAL USE:

- To connect 1 x 2, 2 x 2, and 2 x 3 Slot Support Beams to one another at a perpendicular (90°) angle.

FEATURES:

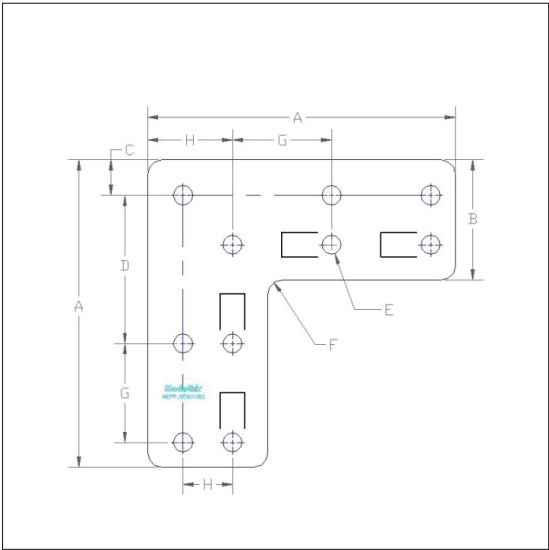
- Recessed tabs allow for the accurate positioning into beam T-slots to ensure squareness of the joint.

MATERIAL:

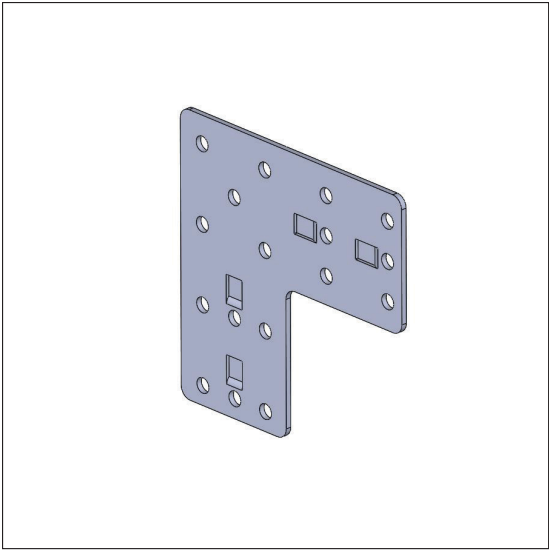
- Mild Steel, Zinc Plated.

WEIGHT:

- 0.60 lb [0.27 kg]



	Inches (in.)	Millimeters (mm)
A	5.44	138.18
B	2.13	53.98
C	0.63	16.00
D	2.63	66.80
E	Ø 0.34	Ø 8.64
F	R 0.25	R 6.35
G	1.75	44.45
H	1.50	38.10
I	–	–



B050032100
3-Slot 90° Corner Joining Plate

TYPICAL USE:

- To connect 1 x 3, 2 x 3, and 3 x 3 Slot Support Beams to one another at a perpendicular (90°) angle.

FEATURES:

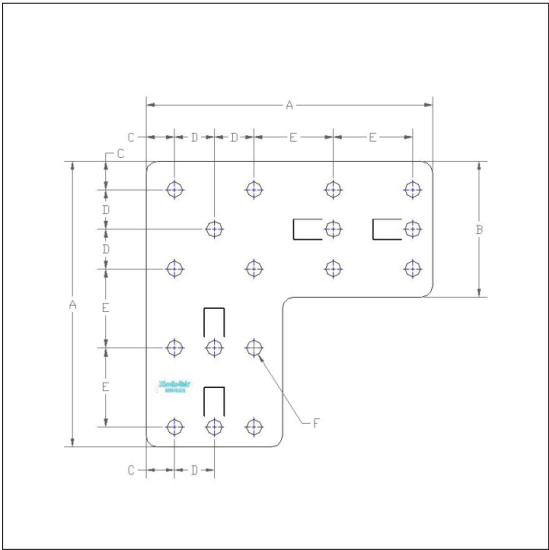
- Recessed tabs allow for the accurate positioning into beam T-slots to ensure squareness of the joint.

MATERIAL:

- Mild Steel, Zinc Plated.

WEIGHT:

- 0.93 lb [0.42 kg]



	Inches (in.)	Millimeters (mm)
A	6.31	160.34
B	3.00	76.20
C	0.63	16.00
D	0.88	22.23
E	1.75	44.45
F	Ø 0.34	Ø 8.64
G	–	–
H	–	–
I	–	–



B050042102
1-Slot Heavy Duty Joining Plate

TYPICAL USE:

- To connect 1 x 3, 2 x 3, and 3 x 3 Slot Support Beams to one another at a perpendicular (90°) angle.

FEATURES:

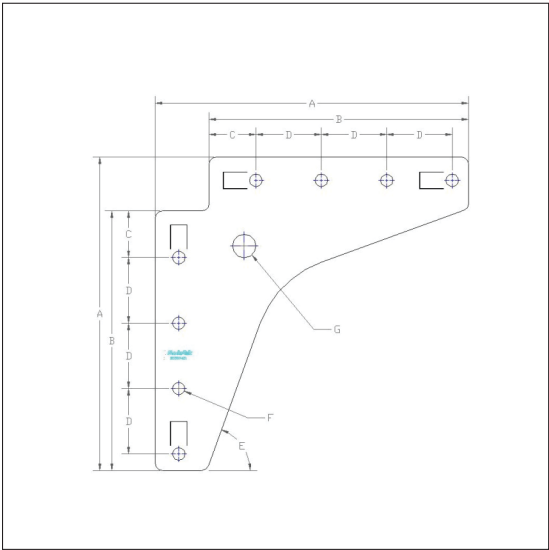
- Recessed tabs allow for the accurate positioning into beam T-slots to ensure squareness of the joint.

MATERIAL:

- Mild Steel, Zinc Plated.

WEIGHT:

- 0.93 lb [0.42 kg]



	Inches (in.)	Millimeters (mm)
A	8.38	212.73
B	6.94	176.21
C	1.25	31.75
D	1.75	44.45
E	70.00°	1778.00°
F	Ø 0.34	Ø 8.64
G	Ø 0.63	Ø 16.00
H	–	–
I	–	–