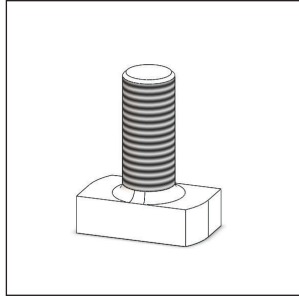


A collection of various metal drill bits and tools arranged on a wooden block in a workshop setting. The tools include several standard double-flute drill bits, a larger drill bit with a gold-colored coating, and several end mills of different sizes. The tools are standing upright on a light-colored wooden block. In the background, a person in a dark blue shirt is visible, working at a station. The scene is lit with soft, natural light, creating a professional and industrial atmosphere.

ASSEMBLY HARDWARE



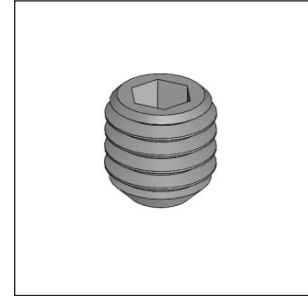
T-Bolts
Part Nos. Shown in
T-Bolt Ordering Chart
Page 110



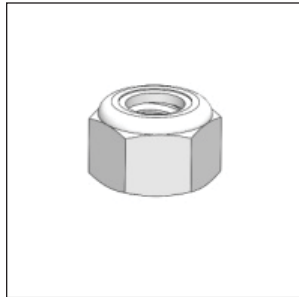
6 Lobe Flat Head Thread
Cutting Cap Screw, Type F
1/4" - 20 x 1 1/4"
25C125TTF
Page 111



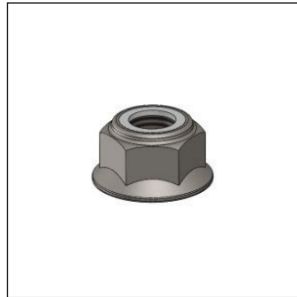
Self Tapping Screw For
Guide Rail #8 x 1/4"
8N25TPC
Page 111



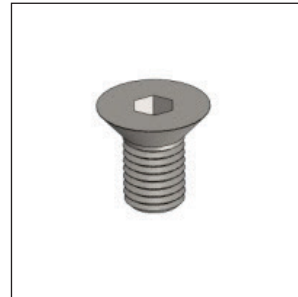
Cup Point Socket Set Screw
25C31KKCS
Page 111



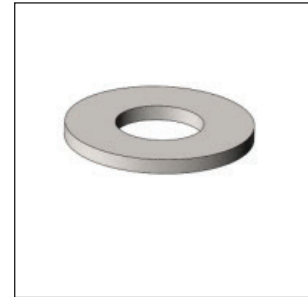
Nylon insert Hex Lock Nuts
Part Nos. Shown in
HLNUT Ordering Chart
Page 112



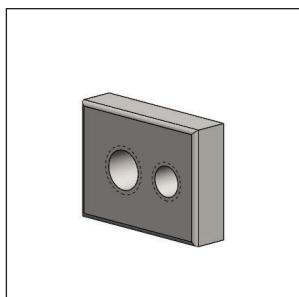
Flange Nut 5/16"-18
31CNNEFW
Page 112



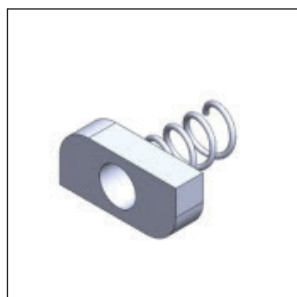
Flat Head Cap Screw
1/2" - 13 x 7/8"
50C88KFC
Page 112



Flat Caster Washers
Part Nos. Shown in
FCWasher Ordering Chart
Page 112 & 114



Double Square Nut 5/16"-
18 & 1/4"- 20
H010072100
Page 113



Thin Spring Strut Nuts
Part Nos. Shown in
SPRING NUT Ordering
Chart Page 114



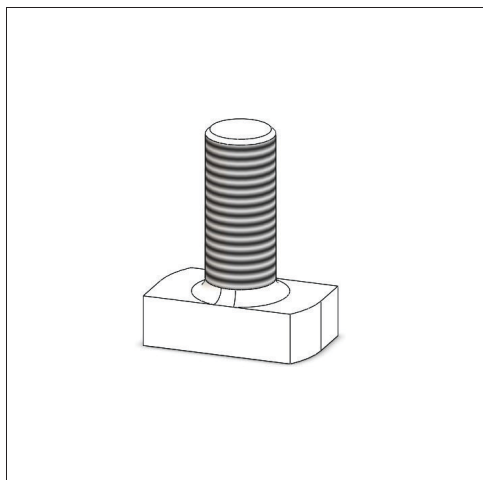
Torx Screw 1/4" - 20x1
25C100PTFZ
Page 114



Lock Washers
Part Nos. Shown in
LWASHER Ordering Chart
Page 114

ASSEMBLY HARDWARE

| APPLICATION | FASTENER TYPE | RECOMMENDED TORQUE (LBS.-FT.) |
|---|--|-------------------------------|
| Corner Tab Bracket into Square Nut | 5/16" - 18 Hex Head Cap Screw | 16 |
| End Plate into Support Beam | 1/4" - 20 Flat Head Cap Screw | 14 |
| Heavy Duty Corner Tab Bracket into Square Nut | 5/16" - 18 Flat Head Cap Screw | 17 |
| Square Nut into Support Beam T-slot | 1/4" - 20 Socket Set Screw | 8 |
| Square Nut into Support Beam T-slot | 5/16" - 18 Socket Set Screw | 8 |
| Web Brackets, etc. into 5/16" Lock Nut & Washer | 5/16"- 18 T-Bolt | 12 |
| End of Support Beam | 1/4" - 20 x 1 1/4" 6-Lobe Thread Cutting Screw | 14 |
| End of Support Beam | 1/4"- 20 x 1" Socket Head Cap Screw | 14 |
| Web Bracket into Square Nut | 5/16" - 18 Hex Head Cap Screw | 16 |



T-Bolts

TYPICAL USE:

- To secure mounting hardware to support beam T-slots.

FEATURES:

- Easy twist and locate installation from the side of the beam.
- Indicator slot to identify proper orientation.
- The T-Bolt is known to be fastened correctly when the indicator slot is perpendicular to the support beam T-slot.

MATERIAL:

- Low Carbon Steel, Zinc Plated.

| T-Bolt Ordering Chart | | | |
|-----------------------|----------------|------------|----------------|
| Part Number | Description | Length (L) | Weight (lb/kg) |
| H0100121 | 3/4" T-Bolt | 0.98 in | 0.03/0.01 |
| H0100221 | 7/8" T-Bolt | 1.10 in | 0.04/0.02 |
| H0100321 | 1" T-Bolt | 1.23 in | 0.04/0.02 |
| H0100421 | 1 1/4" T-Bolt | 1.48 in | 0.04/0.02 |
| H0100521 | 1 1/2" T-Bolt | 1.73 in | 0.05/0.02 |
| H0100621 | M8-1.25 T-Bolt | 27.34 mm | 0.03/0.01 |

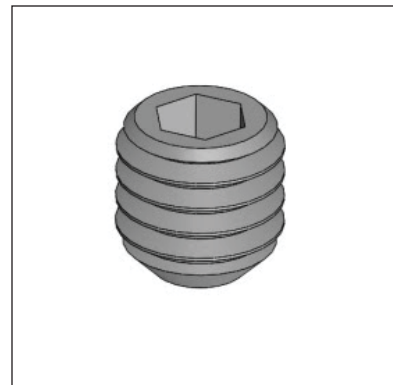
6-Lobe Flat Head Thread Cutting Cap Screw, Type F

| Part Number | Description | Material | Weight (lb/kg) |
|-------------|--------------------|--------------------|----------------|
| 25C125TTF | 1/4" - 20 x 1 1/4" | Steel, Black Oxide | 0.02/0.01 |

Self Tapping-Screw, For Snap On Guide Rail

| Part Number | Description | Material | Weight (lb/kg) |
|-------------|-------------|--------------------|----------------|
| 8N25TPC | #8 X 1/4" | Steel, Black Oxide | 0.02/0.01 |

| Part Number | Description | Material | Weight (lb/kg) |
|-------------|--------------------|----------------------|----------------|
| 25C31KKCS | 1/4" - 20 x 5/16" | 18-8 Stainless Steel | 0.01/0.01 |
| 31C31KKCS | 5/16" - 18 x 5/16" | 18-8 Stainless Steel | 0.01/0.01 |
| 31C37KKCS | 5/16" - 18 x 3/8" | 18-8 Stainless Steel | 0.01/0.01 |
| 10F100KKCS | 10 - 32 x 1" | 18-8 Stainless Steel | 0.02/0.01 |



Nylock Nuts

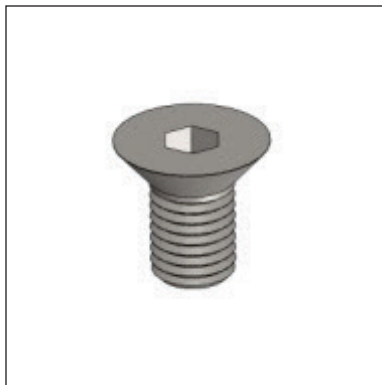
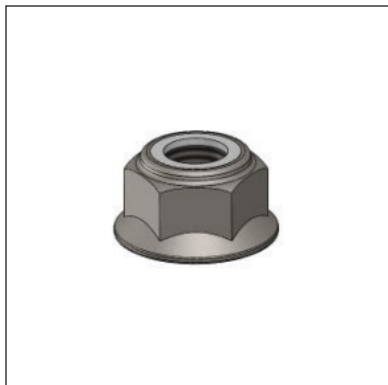
| Part Number | Description | Material | Weight (lb/kg) |
|-------------|-------------|--------------------|----------------|
| 31CNNEFW | 5/16" - 18 | Steel, Zinc Plated | 0.01/0.01 |
| 31CNNE | 5/16" - 18 | Steel, Zinc Plated | 0.01/0.01 |

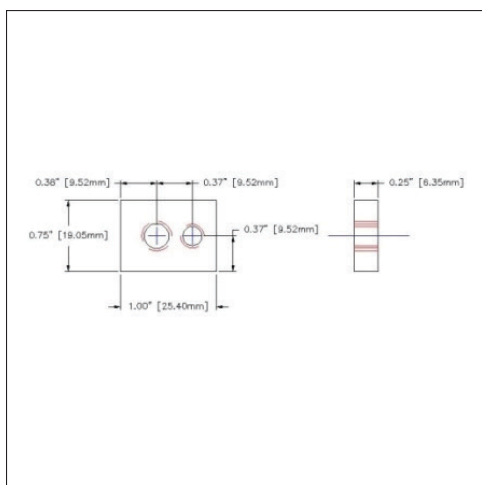
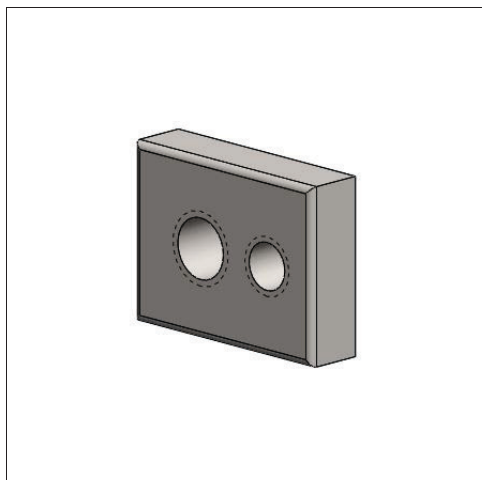
Flat Head Cap Screw

| Part Number | Description | Material | Weight (lb/kg) |
|-------------|----------------|--------------------|----------------|
| 50C88KFC | 1/2"-13 x 7/8" | Steel, Black Oxide | 0.01/0.01 |

Flat Caster Washers Ordering Chart

| Part Number | Description | Material | Weight (lb/kg) |
|----------------|---|--------------------|----------------|
| 56N250WSDZ/125 | 9/16" X 2 1/2" (for 1/2" stem caster) | Steel, Zinc Plated | 0.01/0.01 |
| 81N250WSDZ/125 | 13/16" X 2 1/2" (for 3/4" stem caster) | Steel, Zinc Plated | 0.01/0.01 |





H010072100 5/16"-18 & 1/4"-20 Double Square Nut

TYPICAL USE:

- To secure mounting hardware to support beam T-slots.
- Used in place of a T-Bolt for increased surface contact with the T-slot profile to provide high loading capacity.
- Provides easy movement within the length of extrusion T-slots for easier positioning and adjustment of attachments.

FEATURES:

- Secured in T-slots with 1/4" - 20 or 5/16" 18 set screws and attached to hardware with 1/4" - 20 or 5/16" - 18 screws.

WEIGHT:

- 0.05 lb [0.02 kg]

HARDWARE RECOMMENDED FOR ASSEMBLY:

- 1/4" - 20 Cup Point Socket Set Screw (25C31KKCS), 1 each.
- 5/16" - 18 Cup Point Socket Set Screw (31C31KKCS), 1 each.

1/4-20 X 1 Pan Torx Type F, Zinc Plated

| Part Number | Description | Material | Weight (lb/kg) |
|-------------|---------------|--------------------|----------------|
| 25C100PTFZ | 1/4" - 20 x 1 | Steel, Zinc Plated | 0.04/0.02 |

Flat Washers Ordering Chart

| Part Number | Description | Material | Weight (lb/kg) |
|---------------|-------------|--------------------|----------------|
| 25NWSAZ | 1/4" | Steel, Zinc Plated | 0.01/0.01 |
| 68N34WSDZ/089 | 5/16" | Steel, Zinc Plated | 0.01/0.01 |
| 37NWSAZ | 3/8" | Steel, Zinc Plated | 0.01/0.01 |
| 50NWSAZ | 1/2" | Steel, Zinc Plated | 0.01/0.01 |
| 75NWSAZ | 3/4" | Steel, Zinc Plated | 0.01/0.01 |

Lock Washers/Spring Nuts Ordering Chart

| Part Number | Description | Material | Weight (lb/kg) |
|-------------|-------------|---|----------------|
| 25NLOCZ | 1/4" | Zinc Plated Steel Medium Carbon, Heat Treated | 0.01/0.001 |
| 31NLOCZ | 5/16" | Zinc Plated Steel Medium Carbon, Heat Treated | 0.01/0.001 |
| 37NLOCZ | 3/8" | Zinc Plated Steel Medium Carbon, Heat Treated | 0.01/0.001 |
| G-1534 | 1/4" - 20 | | 0.01/0.001 |
| G-1532 | 10 - 32 | | 0.01/0.001 |

