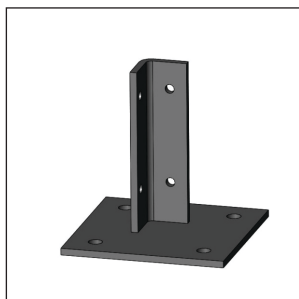


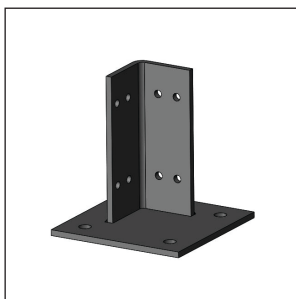
SUPPORT FEET & CASTERS



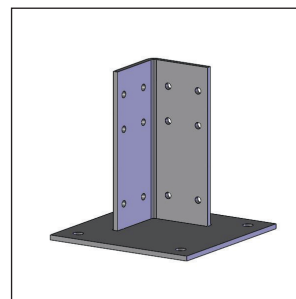
FIXED SUPPORT FEET



1 x 1 Slot Center Angle Fixed Foot
H020012100
Page 80

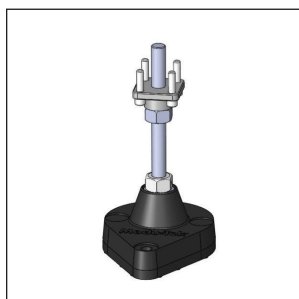


2 x 2 Slot Center Angle Fixed Foot
H020022100
Page 81

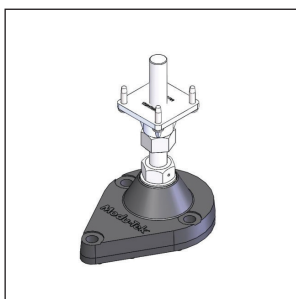


3 x 3 Slot Center Angle Fixed Foot
H020032101
Page 82

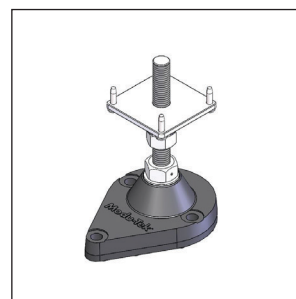
TEARDROP LEVELING FOOT ASSEMBLIES



1 x 1 Slot Teardrop Leveling
Foot Assembly
H020091100
Page 83

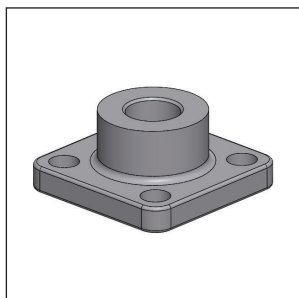


2 x 2 Slot Teardrop Leveling
Foot Assembly
H020101100
Page 84

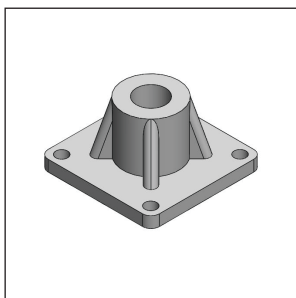


3 x 3 Slot Teardrop Leveling
Foot Assembly
H020111100
Page 85

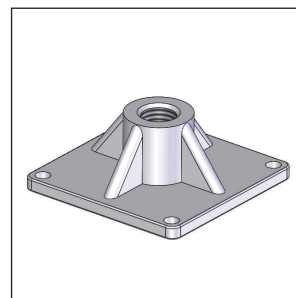
LEVELING FOOT SUPPORTS



1 x 1 Slot Leveling Foot Support
H020042100
Page 86



2 x 2 Slot Leveling Foot Support
H020052100
Page 87



3 x 3 Slot Leveling Foot Support
H020062100
Page 88

TEARDROP LEVELING FEET

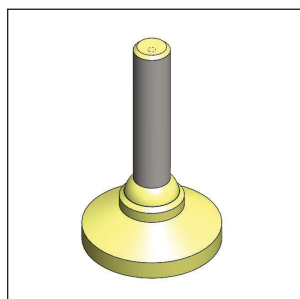


Teardrop Leveling Foot with
1/2"-13 Stem
H020072100
Page 89

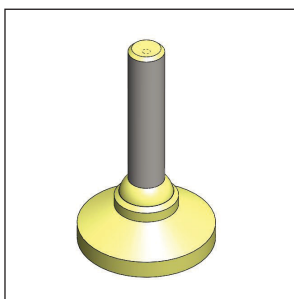


Teardrop Leveling Foot with
3/4"-10 Stem
H020082100
Page 90

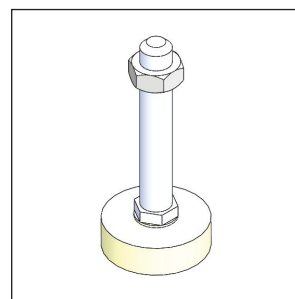
ROUND LEVELING FEET



All Metal Leveling Foot with
1/2"-13 Stem
H020122100
Page 91

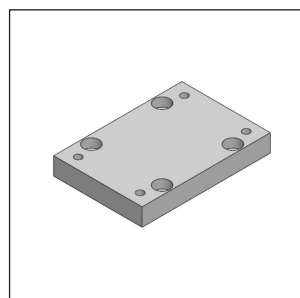


All Metal Leveling Foot with
3/4"-10 Stem
H020132100
Page 92

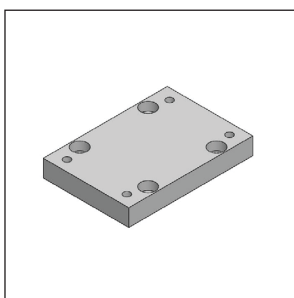


Leveling Foot with 1/2"-13 Stem &
Jam Nut
H020142100
Page 93

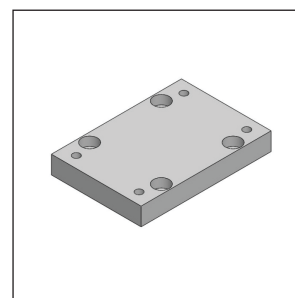
RIGID CASTER MOUNTING PLATES



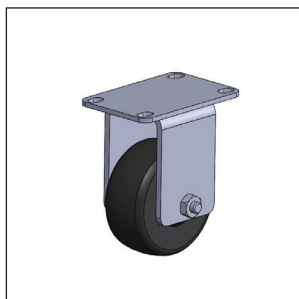
1 x 1 Slot Rigid Caster Plate
H030012100
Page 94



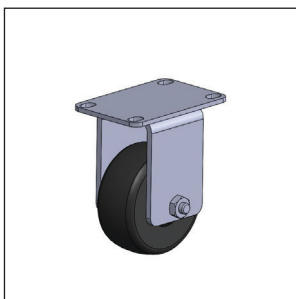
2 x 2 Slot Rigid Caster Plate
H030022100
Page 95



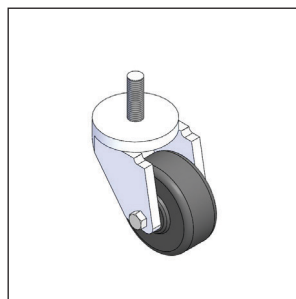
3 x 3 Rigid Caster Plate
H030032100
Page 96

RIGID CASTERS

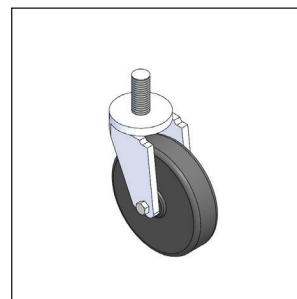
Rigid Caster w/ 3"
Diameter Wheel
H030052100
Page 97



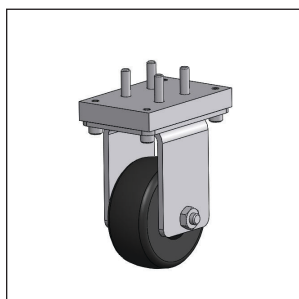
Rigid Caster w/ 5"
Diameter Wheel
H030042100
Page 98



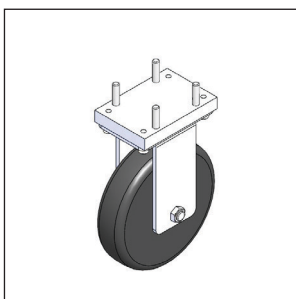
Swivel Caster w/ 1/2" Stem
H030092100
Page 99



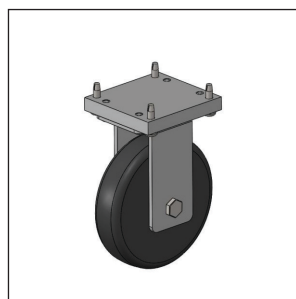
Swivel Caster w/ 3/4" Stem
H030102100
Page 100

RIGID CASTER ASSEMBLIES WITH BRAKES

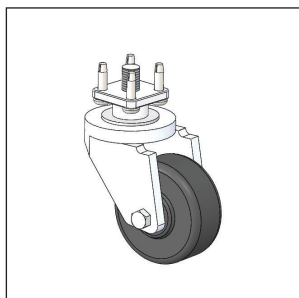
1 x 1 Slot Rigid Caster Assy.
H030061100
Page 101



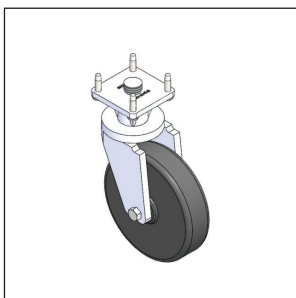
2 x 2 Slot Rigid Caster Assy.
H030071100
Page 102



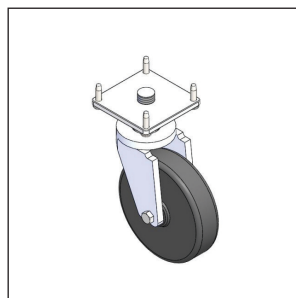
3 x 3 Slot Rigid Caster Assy.
H030081100
Page 103

SWIVEL CASTER ASSEMBLY

1 x 1 Swivel Caster Assy.
H030131100
Page 104



2 x 2 Swivel Caster Assy.
H030141100
Page 105



3 x 3 Swivel Caster Assy.
H030151100
Page 106



H020012100 1 x 1 Slot Center Angle Fixed Foot

TYPICAL USE:

- Fixed support base for 1 x 1 slot support beam legs. Primarily designed for guarding and lighter-weight, non-load bearing applications.

FEATURES:

- Solid base for mounting beam to the floor to provide and anchor for machine guarding, benches, etc.
- T-slots on two sides of the support beam are accessible to within 0.25" [6.35mm] of the floor.
- Pre-drilled holes for lagging to the floor.

MATERIAL:

- Hot Rolled Steel, Black Powder Coated.

WEIGHT:

- 3.75 lbs [1.70 kgs]

HARDWARE RECOMMENDED FOR ASSEMBLY:

For attachment to support beam:

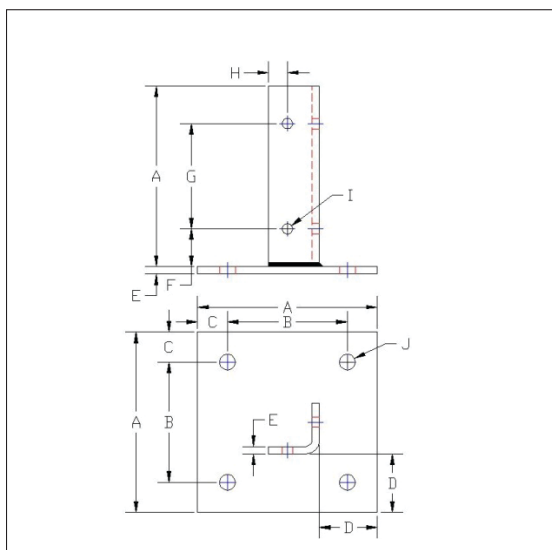
- 5/16" - 18 x 5/8" Button Head Cap Screws (31C62KBC), 4 each.
- Double Square Nuts (H010072100), 4 each.

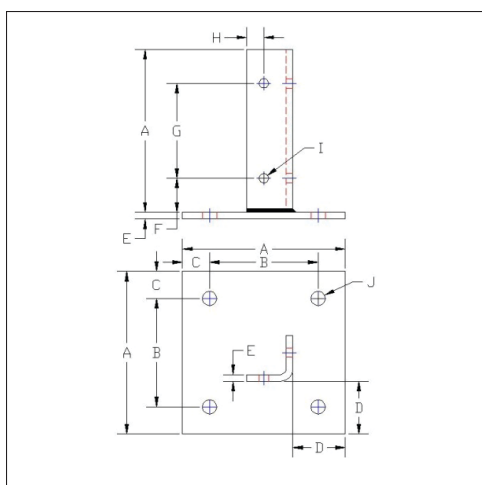
OR

- 5/16" - 18 x 5/8" Hex Head Cap Screws (31C62HCS5Z), 4 each.
- Double Square Nuts (H010072100), 4 each.

For attachment to floor:

- 3/8" diameter x 3 3/4" length Wedge Anchors (37C375AWG), 4 each.





| | Inches (in.) | Millimeters (mm) |
|---|--------------|------------------|
| A | 6.00 | 152.40 |
| B | 4.00 | 101.60 |
| C | 1.00 | 25.40 |
| D | 1.94 | 49.28 |
| E | 0.25 | 6.35 |
| F | 1.25 | 31.75 |
| G | 3.50 | 88.90 |
| H | 0.63 | 16.00 |
| I | Ø 0.34 | Ø 8.64 |
| J | Ø 0.53 | Ø 13.46 |
| K | 0.88 | 22.23 |
| L | 2.57 | 65.28 |

H020022100 2 x 2 Slot Center Angle Fixed Foot

TYPICAL USE:

- Fixed support base for 2 x 2 slot support beam legs. Primarily designed for guarding and lighter-weight, non-load bearing applications.

FEATURES:

- Solid base for mounting beam to the floor to provide and anchor for machine guarding, benches, etc.
- T-slots on two sides of the support beam are accessible to within 0.25" [6.35mm] of the floor.
- Pre-drilled holes for lagging to the floor.

MATERIAL:

- Hot Rolled Steel, Black Powder Coated.

WEIGHT:

- 4.50 lbs [2.04 kgs]

HARDWARE RECOMMENDED FOR ASSEMBLY:

For attachment to support beam:

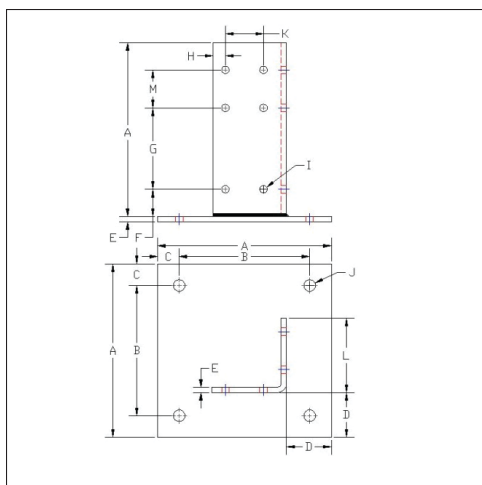
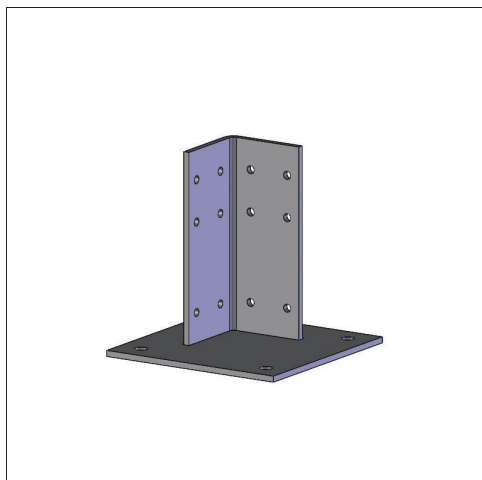
- 5/16" - 18 x 5/8" Button Head Cap Screws (31C62KBC), 8 each.
- Double Square Nuts (H010072100), 8 each.

OR

- 5/16" - 18 x 5/8" Hex Head Cap Screws (31C62HCS5Z), 8 each.
- Double Square Nuts (H010072100), 8 each.

For attachment to floor:

- 3/8" diameter x 3 3/4" length Wedge Anchors (37C375AWG), 4 each.



| | Inches (in.) | Millimeters (mm) |
|---|--------------|------------------|
| A | 8.00 | 203.20 |
| B | 6.00 | 152.40 |
| C | 1.00 | 25.40 |
| D | 2.06 | 52.32 |
| E | 0.25 | 6.35 |
| F | 1.25 | 31.75 |
| G | 3.75 | 95.25 |
| H | 0.56 | 14.22 |
| I | Ø 0.34 | Ø 8.64 |
| J | Ø 0.53 | Ø 13.46 |
| K | 1.75 | 44.45 |
| L | 3.44 | 87.38 |

H020032101 3 x 3 Slot Center Angle Fixed Foot

TYPICAL USE:

- Fixed support base for 3 x 3 slot support beam legs. Primarily designed for guarding and lighter-weight, non-load bearing applications.

FEATURES:

- Solid base for mounting beam to the floor to provide and anchor for machine guarding, benches, etc.
- T-slots on two sides of the support beam are accessible to within 0.25" [6.35mm] of the floor.
- Pre-drilled holes for lagging to the floor.

MATERIAL:

- Hot Rolled Steel, Black Powder Coated.

WEIGHT:

- 8.00 lbs [3.63 kgs]

HARDWARE RECOMMENDED FOR ASSEMBLY:

For attachment to support beam:

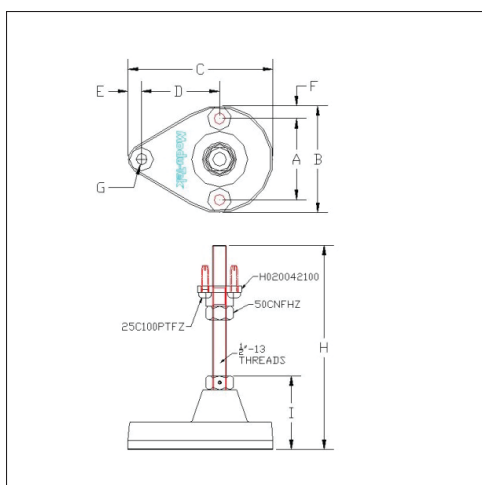
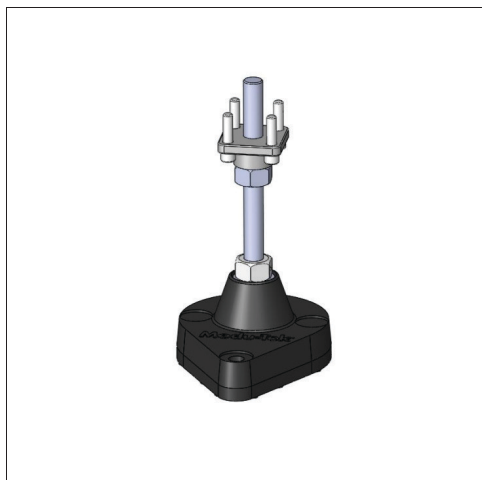
- 5/16" - 18 x 5/8" Button Head Cap Screws (31C62KBC), 8 each.
- Double Square Nuts (H010072100), 8 each.

OR

- 5/16" - 18 x 5/8" Hex Head Cap Screws (31C62HCS5Z), 8 each.
- Double Square Nuts (H010072100), 8 each.

For attachment to floor:

- 3/8" diameter x 3 3/4" length Wedge Anchors (37C375AWG), 4 each.



| | Inches (in.) | Millimeters (mm) |
|---|--------------|------------------|
| A | 3.00 | 76.20 |
| B | 3.94 | 100.08 |
| C | 5.35 | 135.89 |
| D | 2.88 | 73.15 |
| E | 0.50 | 12.70 |
| F | 0.47 | 11.94 |
| G | Ø 0.41 | Ø 10.41 |
| H | 7.50 | 190.50 |
| I | 2.72 | 69.09 |
| J | – | – |
| K | – | – |
| L | – | – |

H020091100 1 x 1 Slot Teardrop Leveling Foot Assembly

TYPICAL USE:

- Leveling foot and accompanying 1 x 1 Slot Leveling Foot Support and hardware specifically designed for mating with 1 x 1 Slot Support Beam legs.

FEATURES:

- Three holes in the base for use in lagging to the floor.
- Teardrop shape facilitates lagging when clearance for lag bolt drilling is needed.
- Easy height adjustment with 1/2" mounting rod and included adjustment nut.
- Mounting hardware included as described below.

WEIGHT CAPACITY:

- 1,200 lbs [544 kgs] static load

MATERIALS:

- Stem & Leveling Nut: Zinc-plated Steel
- Base: Glass-filled Nylon
- Support (provides mounting surface for support beam): Pressure Die-cast Aluminum
- Socket Head Cap Screws: 18 - 8 Stainless Steel

WEIGHT:

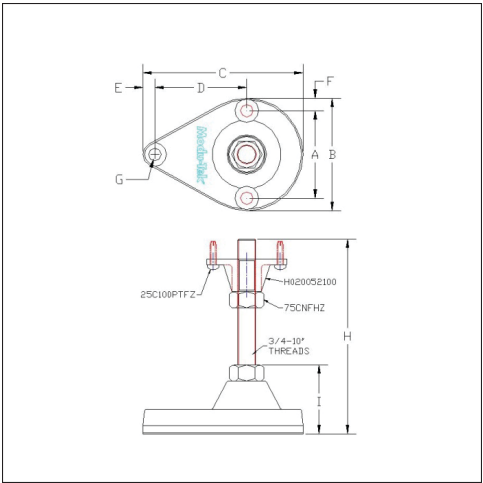
- 1.20 lbs [0.54 kg]

HARDWARE INCLUDED:

- Teardrop Leveling Foot with 1/2" - 13 Stem (H020072100), 1 each.
- 1 x 1 Slot Leveling Foot Support (H020042100), 1 each.
- 1/4 - 20 x 1 Pan Torx Type F Plated (25C100PTFZ), 4 each.
- 1/2" - 13 Standard Hex Nut (50CNFHZ), 1 each.

HARDWARE RECOMMENDED FOR ATTACHMENT TO THE FLOOR:

- 3/8" diameter x 3 3/4" length Wedge Anchors (37C375AWG), 3 each.



| | Inches (in.) | Millimeters (mm) |
|---|--------------|------------------|
| A | 3.00 | 76.20 |
| B | 3.94 | 100.08 |
| C | 5.35 | 135.89 |
| D | 2.88 | 73.15 |
| E | 0.50 | 12.70 |
| F | 0.47 | 11.94 |
| G | Ø 0.41 | Ø 10.41 |
| H | 7.50 | 190.50 |
| I | 2.72 | 69.09 |
| J | – | – |
| K | – | – |
| L | – | – |

H020101100

2 x 2 Slot Teardrop Leveling Foot Assembly

TYPICAL USE:

- Leveling foot and accompanying 2 x 2 Slot Leveling Foot Support and hardware specifically designed for mating with 2 x 2 Slot Support Beam legs.

FEATURES:

- Three holes in the base for use in lagging to the floor.
- Teardrop shape facilitates lagging when clearance for lag bolt drilling is needed.
- Easy height adjustment with 1/2" mounting rod and included adjustment nut.
- Mounting hardware included as described below.

WEIGHT CAPACITY:

- 1,800 lbs [816 kgs] static load

MATERIALS:

- Stem & Leveling Nut: Zinc-plated Steel
- Base: Glass-filled Nylon
- Support (provides mounting surface for support beam): Pressure Die-cast Aluminum
- Socket Head Cap Screws: 18 - 8 Stainless Steel

WEIGHT:

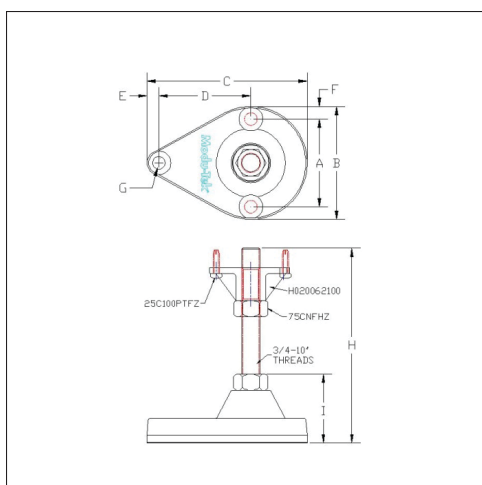
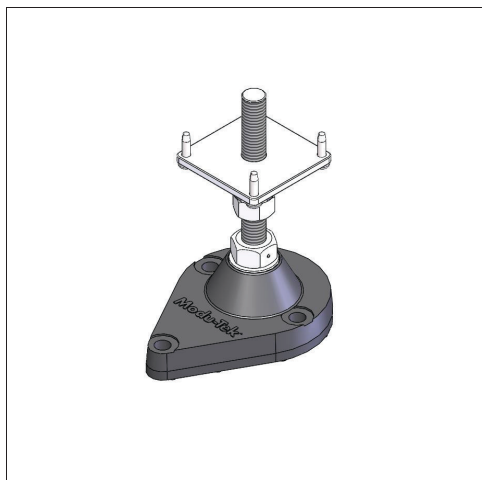
- 1.80 lbs [0.82 kg]

HARDWARE INCLUDED:

- Teardrop Leveling Foot with 3/4" - 10 Stem (H020082100), 1 each.
- 2 x 2 Slot Leveling Foot Support (H020052100), 1 each.
- 1/4 - 20 x 1 Pan Torx Type F Plated (25C100PTFZ), 4 each.
- 3/4" - 10 Standard Hex Nut (75CNFHZ), 1 each.

HARDWARE RECOMMENDED FOR ATTACHMENT TO THE FLOOR:

- 3/8" diameter x 3 3/4" length Wedge Anchors (37C375AWG), 3 each.



| | Inches (in.) | Millimeters (mm) |
|---|--------------|------------------|
| A | 3.69 | 93.73 |
| B | 4.75 | 120.65 |
| C | 6.75 | 171.45 |
| D | 3.88 | 98.55 |
| E | 0.50 | 12.70 |
| F | 0.53 | 13.46 |
| G | Ø 0.53 | Ø 13.46 |
| H | 8.21 | 208.53 |
| I | 2.90 | 73.66 |
| J | — | — |
| K | — | — |
| L | — | — |

H02011100 3 x 3 Slot Teardrop Leveling Foot Assembly

TYPICAL USE:

- Leveling foot and accompanying 3 x 3 Slot Leveling Foot Support and hardware specifically designed for mating with 3 x 3 Slot Support Beam legs.

FEATURES:

- Three holes in the base for use in lagging to the floor.
- Teardrop shape facilitates lagging when clearance for lag bolt drilling is needed.
- Easy height adjustment with 1/2" mounting rod and included adjustment nut.
- Mounting hardware included as described below.

WEIGHT CAPACITY:

- 1,800 lbs [816 kgs] static load

MATERIALS:

- Stem & Leveling Nut: Zinc-plated Steel
- Base: Glass-filled Nylon
- Support (provides mounting surface for support beam): Pressure Die-cast Aluminum
- Socket Head Cap Screws: 18 - 8 Stainless Steel

WEIGHT:

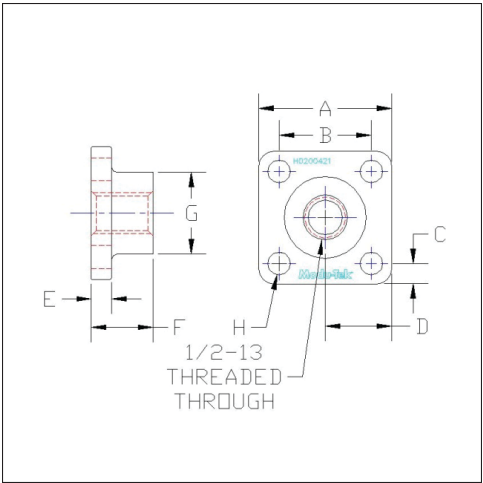
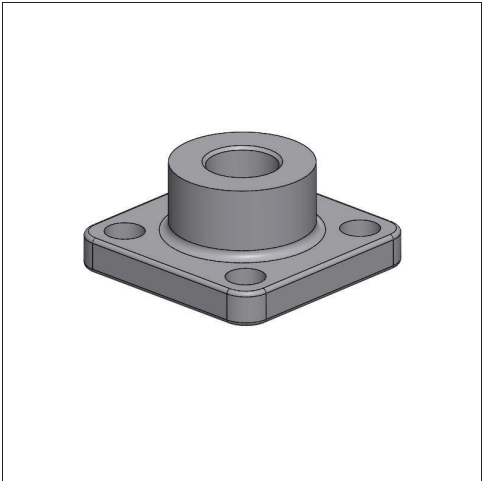
- 2.00 lbs [0.91 kg]

HARDWARE INCLUDED:

- Teardrop Leveling Foot with 3/4" - 10 Stem (H020082100), 1 each.
- 3 x 3 Slot Leveling Foot Support (H020062100), 1 each.
- 1/4 - 20 x 1 Pan Torx Type F Plated (25C100PTFZ), 4 each.
- 3/4" - 10 Standard Hex Nut (75CNFHZ), 1 each.

HARDWARE RECOMMENDED FOR ATTACHMENT TO THE FLOOR:

- 3/8" diameter x 3 3/4" length Wedge Anchors (37C375AWG), 3 each.



| | Inches (in.) | Millimeters (mm) |
|---|--------------|------------------|
| A | 1.63 | 41.40 |
| B | 1.13 | 28.70 |
| C | 0.25 | 6.35 |
| D | 0.81 | 20.57 |
| E | 0.25 | 6.35 |
| F | 0.75 | 19.05 |
| G | 1.00 | 25.40 |
| H | Ø 0.28 | Ø 7.11 |
| I | – | – |
| J | – | – |
| K | – | – |
| L | – | – |

H020042100

1 x 1 Slot Leveling Foot Support

TYPICAL USE:

- Mounts to 1 x 1 slot support beams to provide a base for the foot.

FEATURES:

- Pre-drilled holes for mounting to 1 x 1 slot support beam.
- Tapped hole which accepts a 1/2" shaft for vertical adjustment.

MATERIAL:

- Pressure Die-cast Aluminum.

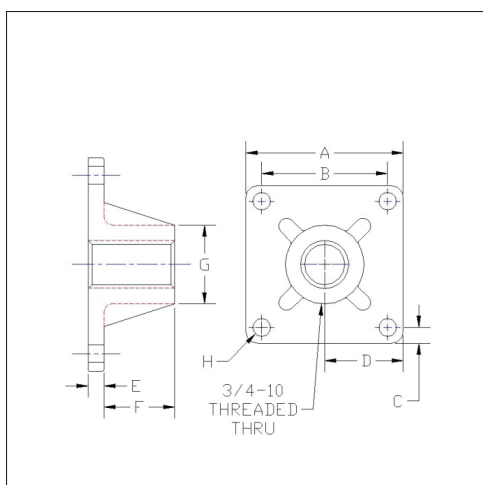
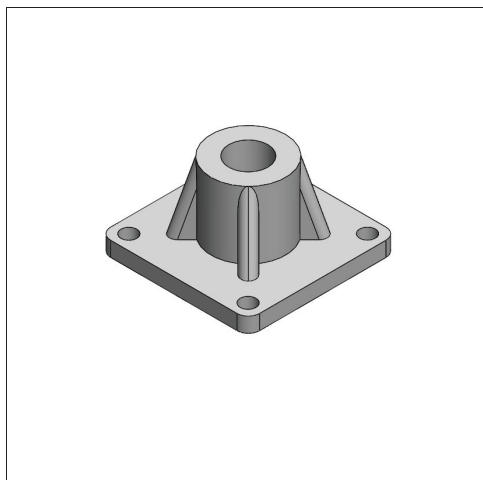
WEIGHT:

- 0.13 lb [0.06 kg]

HARDWARE RECOMMENDED FOR ASSEMBLY:

- 1/4" - 20 x 5/8" Socket Head Cap Screws (25C62KCSS), 4 each.

Assembly Note: Surface "A" must be assembled flush with the end of the 1 x 1 Slot Support Beam, i.e. the flange will not fit into the extrusion cavity for reverse mounting.



| | Inches (in.) | Millimeters (mm) |
|---|--------------|------------------|
| A | 2.50 | 63.50 |
| B | 2.00 | 50.80 |
| C | 0.25 | 6.35 |
| D | 1.25 | 31.75 |
| E | 0.25 | 6.35 |
| F | 1.13 | 28.70 |
| G | 1.25 | 31.75 |
| H | Ø 0.28 | Ø 7.11 |
| I | — | — |
| J | — | — |
| K | — | — |
| L | — | — |

H020052100 2 x 2 Slot Leveling Foot Support

TYPICAL USE:

- Mounts to 2 x 2 slot support beams to provide a base for the foot.

FEATURES:

- Pre-drilled holes for mounting to 2 x 2 slot support beam.
- Tapped hole which accepts a 3/4" shaft for vertical adjustment.

MATERIAL:

- Pressure Die-cast Aluminum.

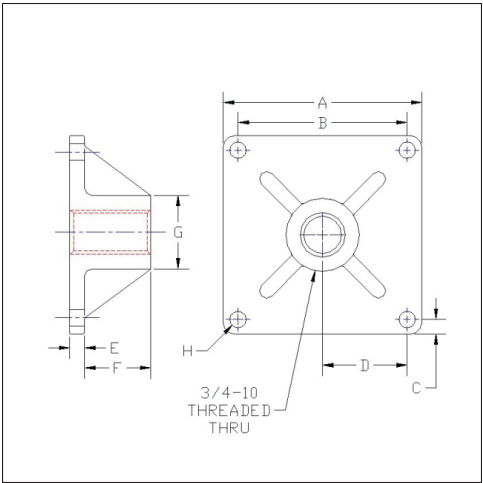
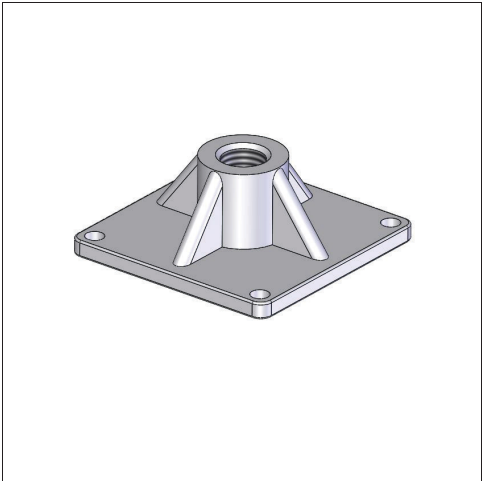
WEIGHT:

- 0.25 lb [0.11 kg]

HARDWARE RECOMMENDED FOR ASSEMBLY:

- 1/4" - 20 x 5/8" Socket Head Cap Screws (25C62KCSS), 4 each.

Assembly Note: Unlike the 1 x 1 Slot Leveling Foot Support, either the top or the bottom surface can be assembled flush with the end of the 2 x 2 Slot Support Beam, i.e. the flange will fit into the extrusion cavity for reverse mounting.



| | Inches (in.) | Millimeters (mm) |
|---|--------------|------------------|
| A | 3.38 | 85.85 |
| B | 2.88 | 73.15 |
| C | 0.25 | 6.35 |
| D | 1.44 | 36.57 |
| E | 0.25 | 6.35 |
| F | 1.13 | 28.70 |
| G | 1.25 | 31.75 |
| H | Ø 0.28 | Ø 7.11 |
| I | – | – |
| J | – | – |
| K | – | – |
| L | – | – |

H020062100

3 x 3 Slot Leveling Foot Support

TYPICAL USE:

- Mounts to 3 x 3 slot support beams to provide a base for the foot.

FEATURES:

- Pre-drilled holes for mounting to 3 x 3 slot support beam.
- Tapped hole which accepts a 3/4" shaft for vertical adjustment.

MATERIAL:

- Pressure Die-cast Aluminum.

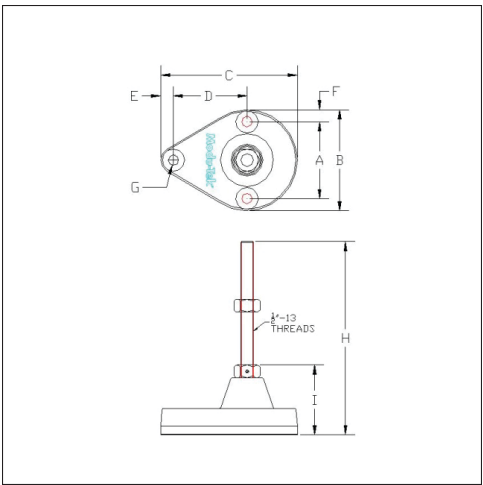
WEIGHT:

- 0.41 lb [0.18 kg]

HARDWARE RECOMMENDED FOR ASSEMBLY:

- 1/4" - 20 x 5/8" Socket Head Cap Screws (25C62KCSS), 4 each.

Assembly Note: Unlike the 1 x 1 Slot Leveling Foot Support, either the top or the bottom surface can be assembled flush with the end of the 3 x 3 Slot Support Beam, i.e. the flange will fit into the extrusion cavity for reverse mounting.



| | Inches (in.) | Millimeters (mm) |
|---|--------------|------------------|
| A | 3.00 | — |
| B | 3.94 | — |
| C | 5.35 | — |
| D | 2.88 | — |
| E | 0.50 | — |
| F | 0.47 | — |
| G | Ø 0.41 | — |
| H | 7.50 | — |
| I | 2.72 | — |
| J | — | — |
| K | — | — |
| L | — | — |

H020072100
Teardrop Leveling Foot
1/2" - 13 Stem

TYPICAL USE:

- Leveling foot for support beam legs. Specifically designed for mating with 1 x 1 Slot Leveling Foot Supports.

FEATURES:

- Three holes in the base for use in lagging to the floor.
- Teardrop shape facilitates lagging when clearance for lag bolt drilling is needed.
- Easy height adjustment with 1/2" mounting rod and included adjustment nut.

WEIGHT CAPACITY:

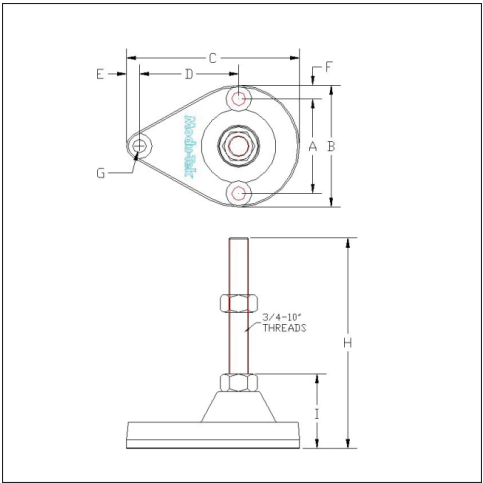
- 1,200 lbs [544 kgs] static load

MATERIALS:

- Stem & Leveling Nut: Zinc-plated Steel
- Base: Glass-filled Nylon

WEIGHT:

- 1.00 lb [0.45 kg]



| | Inches (in.) | Millimeters (mm) |
|---|--------------|------------------|
| A | 3.69 | 93.74 |
| B | 4.75 | 120.65 |
| C | 6.75 | 171.45 |
| D | 3.88 | 98.55 |
| E | 0.50 | 12.70 |
| F | 0.53 | 13.46 |
| G | Ø 0.53 | Ø 13.46 |
| H | 8.21 | 208.53 |
| I | 2.90 | 73.66 |
| J | – | – |
| K | – | – |
| L | – | – |

H020082100

Teardrop Leveling Foot

3/4" - 10 Stem

TYPICAL USE:

- Leveling foot for support beam legs. Specifically designed for mating with 2 x 2 and 3 x 3 Slot Leveling Foot Supports. Intended for supporting heavier loads.

FEATURES:

- Three holes in the base for use in lagging to the floor.
- Teardrop shape facilitates lagging when clearance for lag bolt drilling is needed.
- Easy height adjustment with 3/4" mounting rod and included adjustment nut.

WEIGHT CAPACITY:

- 1,800 lbs [816 kgs] static load

MATERIALS:

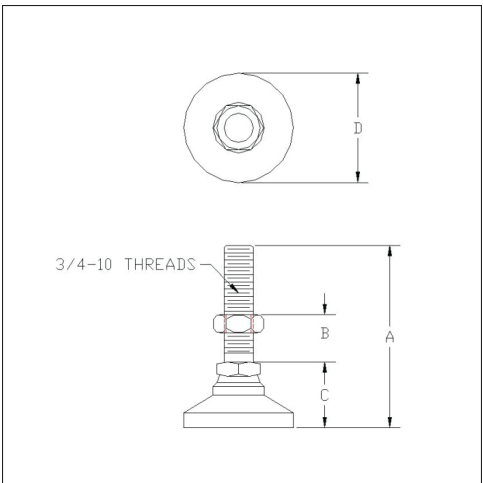
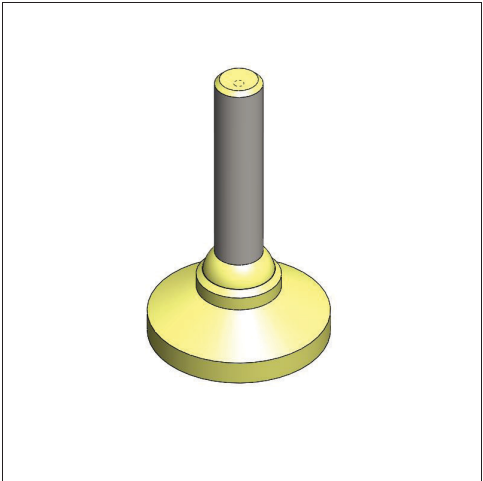
- Stem & Leveling Nut: Zinc-plated Steel
- Base: Glass-filled Nylon

WEIGHT:

- 1.50 lbs [0.68 kg]

HARDWARE RECOMMENDED FOR ATTACHMENT TO THE FLOOR:

- 3/8" diameter x 3 3/4" length Wedge Anchors (37C375AWG), 3 each.



| | Inches (in.) | Millimeters (mm) |
|---|--------------|------------------|
| A | 3.13 | 79.50 |
| B | 0.81 | 20.57 |
| C | 1.13 | 28.70 |
| D | 1.88 | 47.75 |
| E | – | – |
| F | – | – |
| G | – | – |
| H | – | – |
| I | – | – |
| J | – | – |
| K | – | – |
| L | – | – |

H020122100
All Metal Leveling Foot
with 1/2" 13 Stem

TYPICAL USE:

- Leveling foot for support beam legs. Specifically designed for mating with 1 x 1 Slot Leveling Foot Supports (H020042100).

FEATURES:

- Easy height adjustment with included adjustment nut.

WEIGHT CAPACITY:

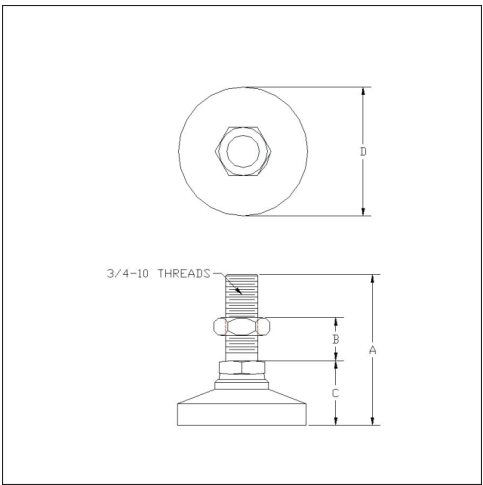
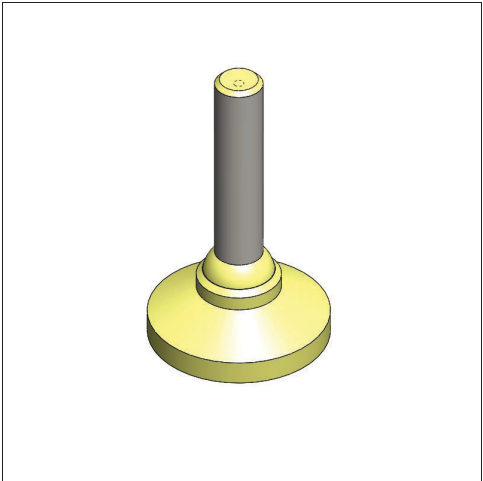
- 5,000 lbs [2,268 kgs] static load.

MATERIAL:

- Yellow Zinc-plated Steel.

WEIGHT:

- 0.50 lb [0.23 kg]



| | Inches (in.) | Millimeters (mm) |
|---|--------------|------------------|
| A | 3.50 | 88.90 |
| B | 1.00 | 25.40 |
| C | 1.13 | 28.70 |
| D | 3.00 | 76.20 |
| E | – | – |
| F | – | – |
| G | – | – |
| H | – | – |
| I | – | – |
| J | – | – |
| K | – | – |
| L | – | – |

H020132100

All Metal Leveling Foot with 3/4" 10 Stem

TYPICAL USE:

- Leveling foot for support beam legs. Specifically designed for mating with 2 x 2 and 3 x 3 Slot Leveling Foot Supports (H020052100 & H020062100 respectively).

FEATURES:

- Easy height adjustment with included adjustment nut.

WEIGHT CAPACITY:

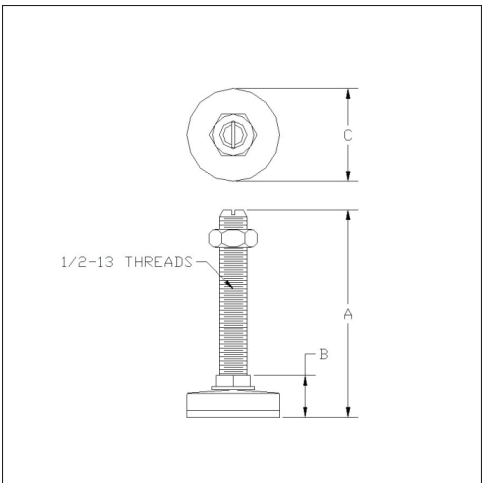
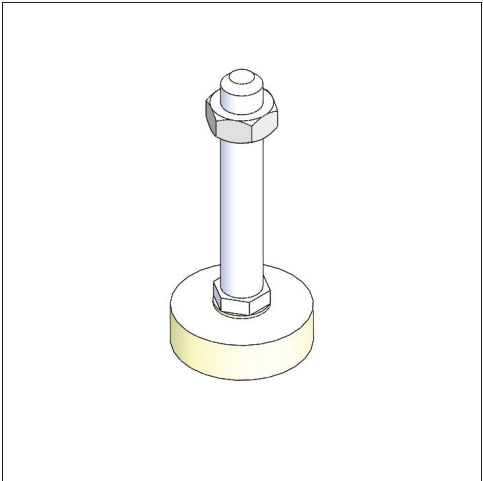
- 7,400 lbs [3,357 kgs] static load.

MATERIAL:

- Yellow Zinc-plated Steel.

WEIGHT:

- 1.75 lbs [0.79 kg]



H020142100
Leveling Foot with
1/2" - 13 Stem

TYPICAL USE:

- Leveling foot for the support of light duty applications such as table top applications, small tables, etc.

FEATURES:

- Non-skid base.
- Easy height adjustment with screw driver and included adjustment nut.

WEIGHT CAPACITY:

- 700 lbs [318 kgs] static load.

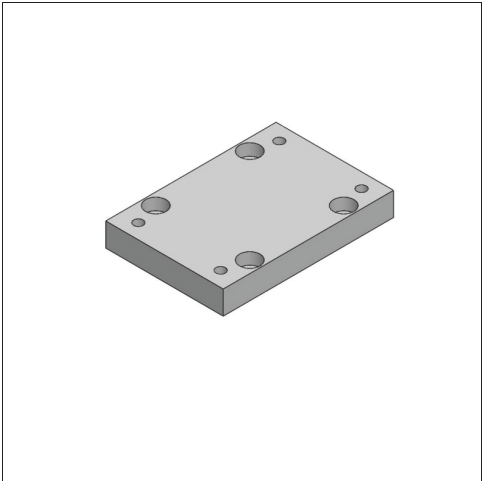
MATERIALS:

- Stem & Shell: Chrome-plated Steel
- Base: Grey Nylon

WEIGHT:

- 0.24 lb [0.11 kg]

| | Inches (in.) | Millimeters (mm) |
|---|--------------|------------------|
| A | 3.76 | 95.50 |
| B | 0.76 | 19.30 |
| C | 1.68 | 42.67 |
| D | — | — |
| E | — | — |
| F | — | — |
| G | — | — |
| H | — | — |
| I | — | — |
| J | — | — |
| K | — | — |
| L | — | — |



H030012100
1 x 1 Slot Rigid Caster
Adapter Plate

TYPICAL USE:

- To connect a rigid caster to a 1 x 1 Slot Support Beam.

FEATURES:

- Provides a transition plate for the mounting of an appropriate rigid caster to the end of a 1 x 1 Support Beam.

MATERIAL:

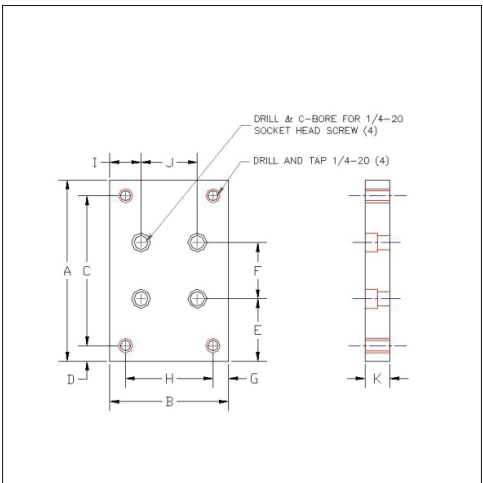
- Clear Anodized Aluminum.

WEIGHT:

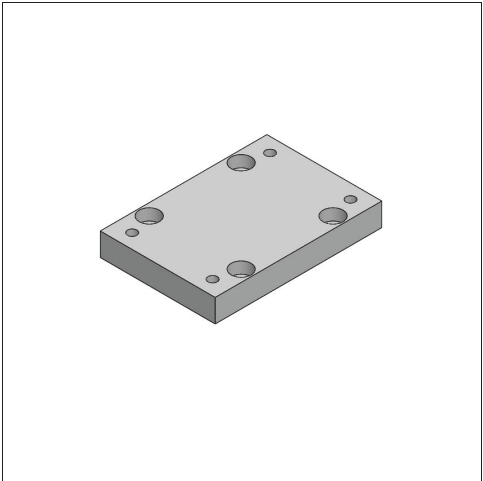
- 0.39 lb [0.18 kg]

HARDWARE RECOMMENDED
FOR ASSEMBLY:

- 1/4" - 20 x 1" Socket Head Cap Screws (25C100KCSS), 4 each.



| | Inches (in.) | Millimeters (mm) |
|---|--------------|------------------|
| A | 3.63 | 92.20 |
| B | 2.38 | 60.45 |
| C | 3.00 | 76.20 |
| D | 0.31 | 7.87 |
| E | 1.25 | 31.75 |
| F | 1.13 | 28.70 |
| G | 0.31 | 7.87 |
| H | 1.75 | 44.45 |
| I | 0.63 | 16.00 |
| J | 1.13 | 28.70 |
| K | 0.50 | 12.70 |
| L | — | — |



H030022100
2 x 2 Slot Rigid Caster
Adapter Plate

TYPICAL USE:

- To connect a rigid caster to a 2 x 2 Slot Support Beam.

FEATURES:

- Provides a transition plate for the mounting of an appropriate rigid caster to the end of a 2 x 2 Support Beam.

MATERIAL:

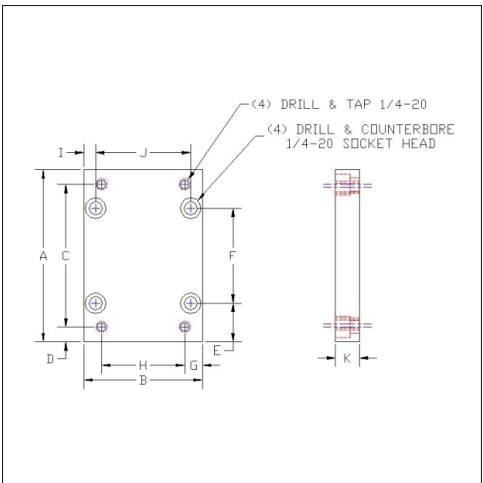
- Clear Anodized Aluminum.

WEIGHT:

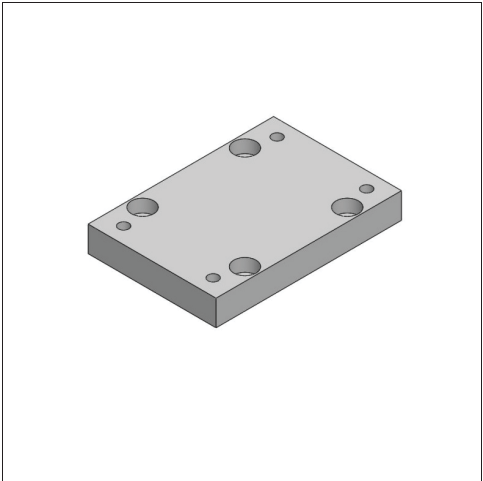
- 0.41 lb [0.19 kg]

HARDWARE RECOMMENDED
FOR ASSEMBLY:

- 1/4" - 20 x 1" Socket Head Cap Screws (25C100KCSS), 4 each.



| | Inches (in.) | Millimeters (mm) |
|---|--------------|------------------|
| A | 3.64 | 92.46 |
| B | 3.64 | 92.46 |
| C | 2.88 | 73.15 |
| D | 0.38 | 9.65 |
| E | 0.38 | 9.65 |
| F | 2.88 | 73.15 |
| G | 0.81 | 20.57 |
| H | 1.75 | 44.45 |
| I | 0.25 | 6.35 |
| J | 2.88 | 73.15 |
| K | 0.50 | 12.70 |
| L | — | — |



H030032100
3 x 3 Slot Rigid Caster
Adapter Plate

TYPICAL USE:

- To connect a rigid caster to a 3 x 3 Slot Support Beam.

FEATURES:

- Provides a transition plate for the mounting of an appropriate rigid caster to the end of a 3 x 3 Support Beam.

MATERIAL:

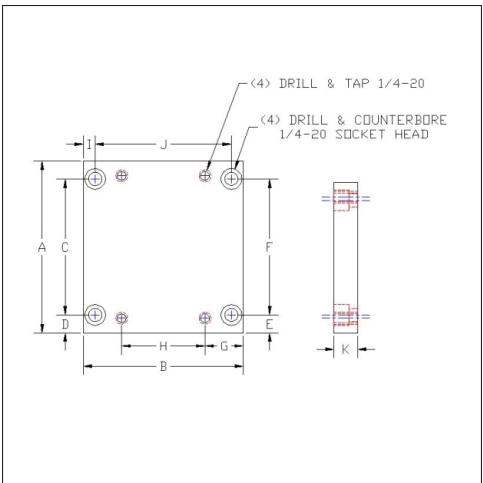
- Clear Anodized Aluminum.

WEIGHT:

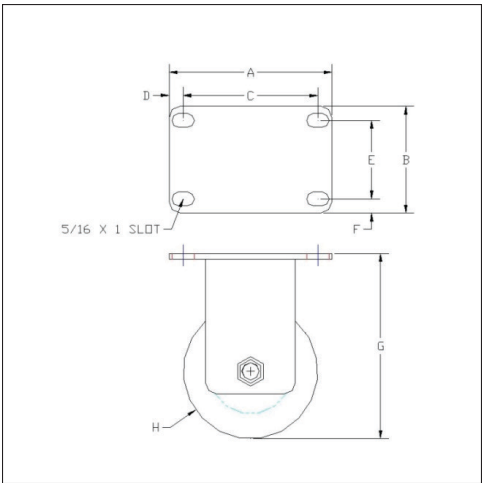
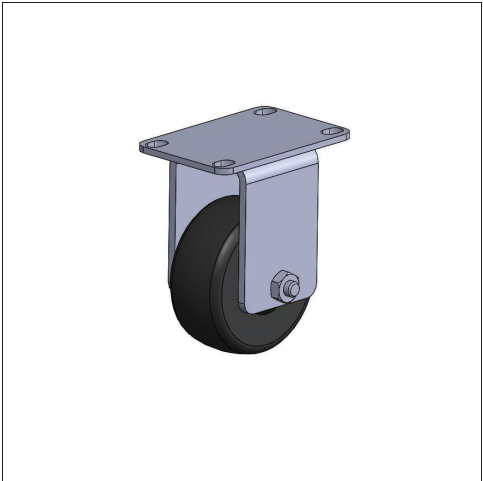
- 0.57 lb [0.26 kg]

HARDWARE RECOMMENDED
FOR ASSEMBLY:

- 1/4" - 20 x 1" Socket Head Cap Screws (25C100KCSS), 4 each.



| | Inches (in.) | Millimeters (mm) |
|---|--------------|------------------|
| A | 3.64 | 92.46 |
| B | 3.64 | 92.46 |
| C | 2.88 | 73.15 |
| D | 0.38 | 9.65 |
| E | 0.38 | 9.65 |
| F | 2.88 | 73.15 |
| G | 0.81 | 20.57 |
| H | 1.75 | 44.45 |
| I | 0.25 | 6.35 |
| J | 2.88 | 73.15 |
| K | 0.50 | 12.70 |
| L | — | — |



| | Inches (in.) | Millimeters (mm) |
|---|--------------|------------------|
| A | 3.63 | 92.20 |
| B | 2.38 | 60.45 |
| C | 3.00 | 76.20 |
| D | 0.31 | 7.87 |
| E | 1.75 | 44.45 |
| F | 0.31 | 7.87 |
| G | 4.13 | 104.90 |
| H | Ø 3.00 | Ø 127.00 |
| I | – | – |
| J | – | – |
| K | – | – |
| L | – | – |

H030052100

Rigid Caster with 3.0 in [76.2 mm] Diameter Wheel

TYPICAL USE:

- Fixed caster with a 3.0 in [76.2 mm] wheel for mating with a 1 x 1 Slot Rigid Caster Adapter Plate (B0500121).

FEATURES:

- Heavy gauge cold rolled steel, formed for strength.

WEIGHT CAPACITY:

- 150 lbs [68 kgs]

MATERIALS:

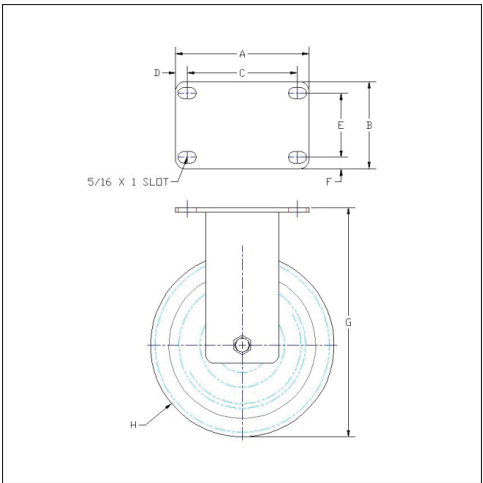
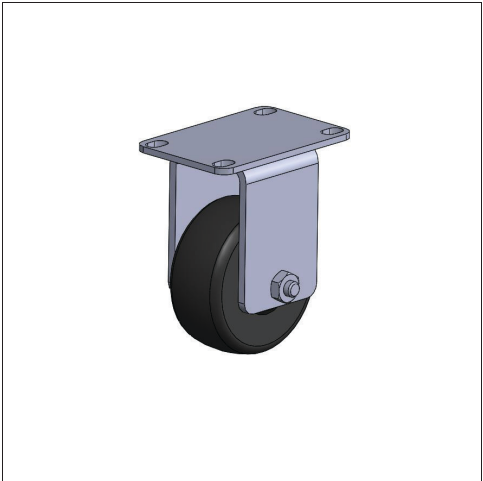
- Wheel: Cushion Tread Rubber.
- Housing: Mild Steel, Bright Zinc Plated.

WEIGHT:

- 1.69 lbs [0.77 kg]

HARDWARE RECOMMENDED FOR ASSEMBLY:

- 1/4" - 20 x 5/8" Socket Head Cap Screws (25C62KCSS), 4 each.



| | Inches (in.) | Millimeters (mm) |
|---|--------------|------------------|
| A | 3.63 | 92.20 |
| B | 2.38 | 60.45 |
| C | 3.00 | 76.20 |
| D | 0.31 | 7.87 |
| E | 1.75 | 44.45 |
| F | 0.31 | 7.87 |
| G | 6.25 | 158.75 |
| H | Ø 5.00 | Ø 127.00 |
| I | – | – |
| J | – | – |
| K | – | – |
| L | – | – |

H030042100

Rigid Caster with 5.0 in [127.0mm] Diameter Wheel

TYPICAL USE:

- Fixed caster with a 5.0 in [127.0 mm] wheel for mating with a 2 x 2 or 3 x 3 Slot Rigid Caster Mounting Plate (H030021100 & H030032100 respectively).

FEATURES:

- Heavy gauge cold rolled steel, formed for strength.

WEIGHT CAPACITY:

- 200 lbs [91 kgs]

MATERIALS:

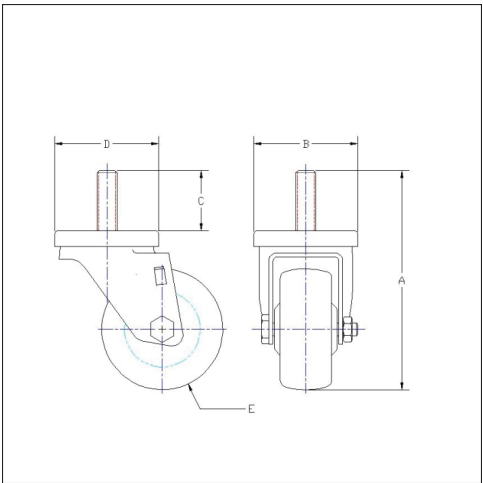
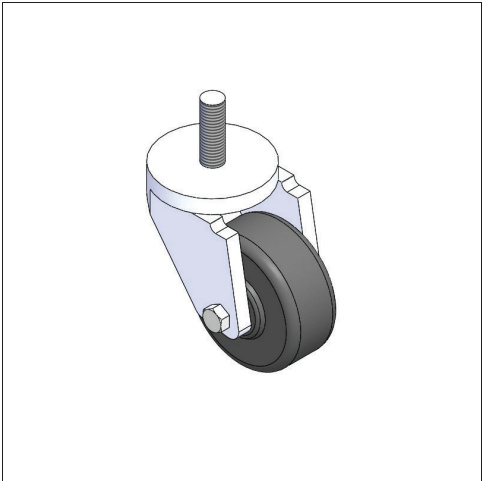
- Wheel: Cushion Tread Rubber.
- Housing: Mild Steel, Bright Zinc Plated.

WEIGHT:

- 2.00 lbs [0.91 kg]

HARDWARE RECOMMENDED FOR ASSEMBLY:

- 1/4" - 20 x 5/8" Socket Head Cap Screws (25C62KCSS), 4 each.



| | Inches (in.) | Millimeters (mm) |
|---|--------------|------------------|
| A | 5.44 | 138.10 |
| B | 2.57 | 65.28 |
| C | 1.50 | 38.10 |
| D | 2.57 | 65.28 |
| E | Ø 3.00 | Ø 76.20 |
| F | – | – |
| G | – | – |
| H | – | – |
| I | – | – |
| J | – | – |
| K | – | – |
| L | – | – |

H030092100

Swivel Caster with 1/2" Stem

TYPICAL USE:

- Caster with a 1/2" stem for mating with a 1 x 1 Slot Leveling Foot Support.

FEATURES:

- Caster swivels 180° upon double ball bearings and hardened raceways.

WEIGHT CAPACITY:

- 150 lbs [68 kgs]

MATERIALS:

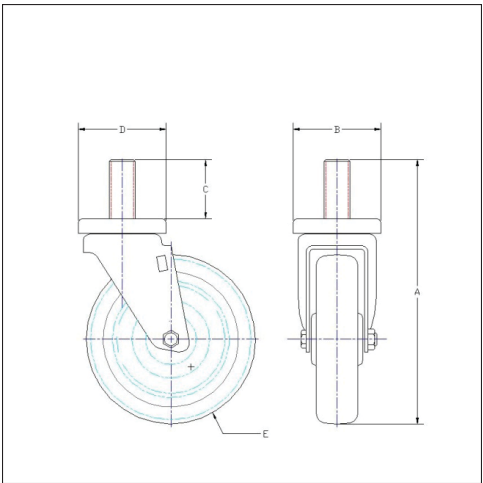
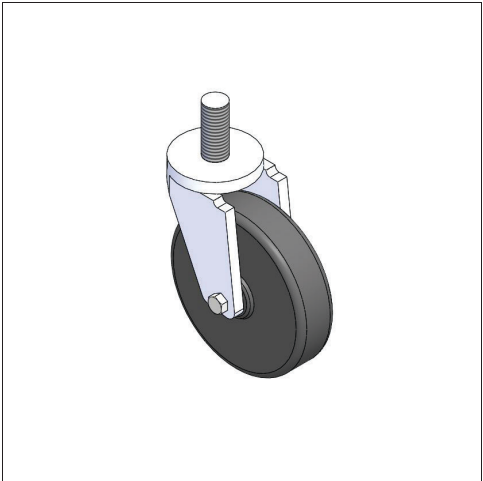
- Wheel: Cushion Tread Rubber.
- Housing: Mild Steel, Bright Zinc Plated.

WEIGHT:

- 1.56 lbs [0.71 kg]

HARDWARE RECOMMENDED FOR ASSEMBLY:

- 9/16" x 2 1/2" Caster Washer (56N250WSDZ/125), 1 each.



| | Inches (in.) | Millimeters (mm) |
|---|--------------|------------------|
| A | 7.81 | 198.33 |
| B | 2.59 | 65.79 |
| C | 1.75 | 44.45 |
| D | 2.59 | 65.79 |
| E | Ø 5.00 | Ø 127.00 |
| F | – | – |
| G | – | – |
| H | – | – |
| I | – | – |
| J | – | – |
| K | – | – |
| L | – | – |

H030102100

Swivel Caster with 3/4" Stem

TYPICAL USE:

- Caster with a 3/4" stem for mating with 2 x 2 and 3 x 3 Slot Leveling Foot Supports.

FEATURES:

- Caster swivels 180° upon double ball bearings and hardened raceways.

WEIGHT CAPACITY:

- 200 lbs [91 kgs]

MATERIALS:

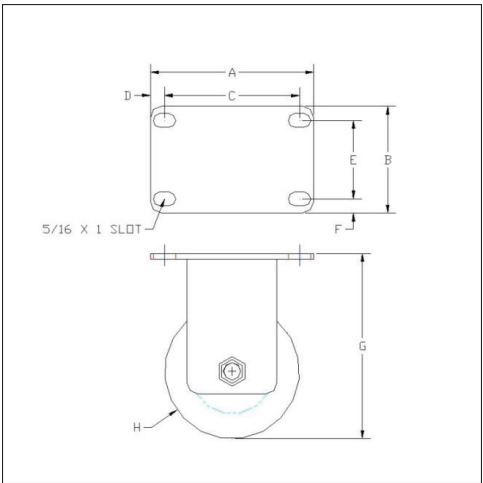
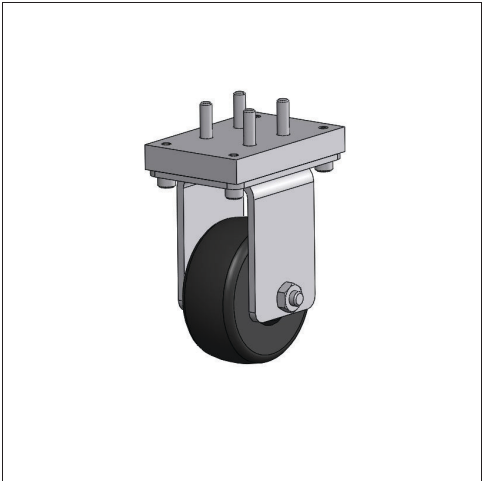
- Wheel: Cushion Tread Rubber.
- Housing: Mild Steel, Bright Zinc Plated.

WEIGHT:

- 2.06 lbs [0.94 kg]

HARDWARE RECOMMENDED FOR ASSEMBLY:

- 13/16" x 2 1/2" Caster Washer (81N250WSDZ/125), 1 each.



| | Inches (in.) | Millimeters (mm) |
|---|--------------|------------------|
| A | 3.63 | 92.20 |
| B | 2.38 | 60.45 |
| C | 3.00 | 76.20 |
| D | 0.31 | 7.87 |
| E | 1.75 | 44.45 |
| F | 0.31 | 7.87 |
| G | 4.13 | 104.90 |
| H | Ø 5.00 | Ø 127.00 |
| I | – | – |
| J | – | – |
| K | – | – |
| L | – | – |

H030061100

1 x 1 Slot Rigid Caster Assembly With Brakes

TYPICAL USE:

- Assembly mounts to the end of a 1 x 1 Slot Support Beam (E010020100) to provide fixed caster mobility.

FEATURES:

- All mounting hardware included.

WEIGHT CAPACITY:

- 150 lbs [68 kgs]

MATERIALS:

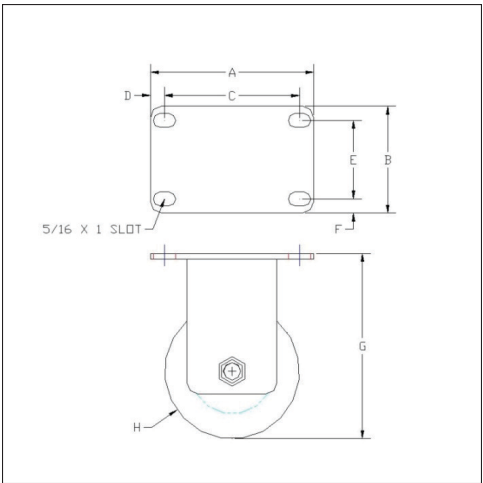
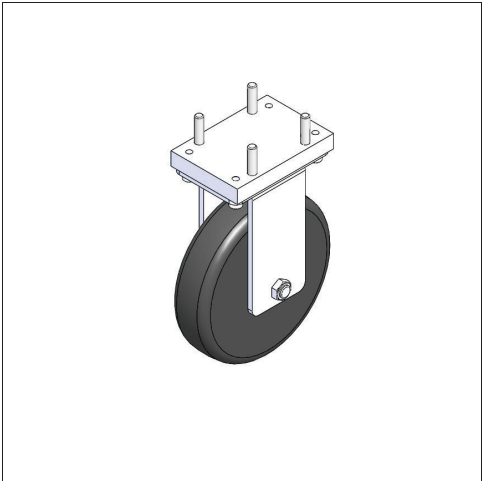
- Wheel: Cushion Tread Rubber.
- Housing: Mild Steel, Bright Zinc Plated.
- Mounting Plate: Clear Anodized Aluminum.

WEIGHT:

- 2.50 lbs [1.13 kgs]

ASSEMBLY HARDWARE INCLUDED:

- Rigid Caster with 3.0" [76.2mm] Diameter Wheel (H030052100), 1 each.
- 1 x 1 Slot Rigid Caster Adapter Plate (H030012100), 1 each.
- 1/4" - 20 x 1" Socket Head Cap Screws (25C100KCSS), 4 each.
- 1/4" - 20 x 5/8" Socket Head Cap Screws (25C62KCSS), 4 each.



| | Inches (in.) | Millimeters (mm) |
|---|--------------|------------------|
| A | 3.63 | 92.20 |
| B | 2.38 | 60.45 |
| C | 3.00 | 76.20 |
| D | 0.31 | 7.87 |
| E | 1.75 | 44.45 |
| F | 0.31 | 7.87 |
| G | 4.13 | 104.90 |
| H | Ø 5.00 | Ø 127.00 |
| I | – | – |
| J | – | – |
| K | – | – |
| L | – | – |

H030071100

2 x 2 Slot Rigid Caster Assembly With Brakes

TYPICAL USE:

- Assembly mounts to the end of a 2 x 2 Slot Support Beam (E010050100) to provide fixed caster mobility.

FEATURES:

- All mounting hardware included.

WEIGHT CAPACITY:

- 200 lbs [91 kgs]

MATERIALS:

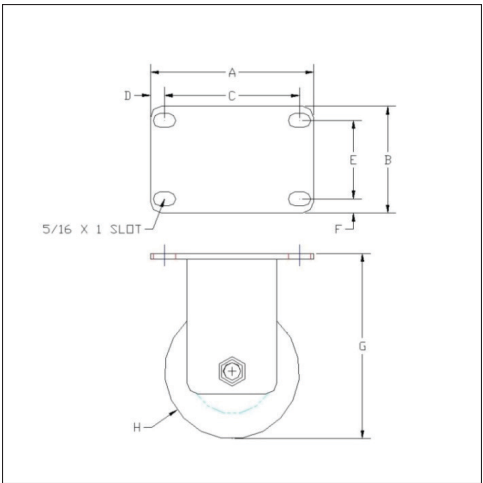
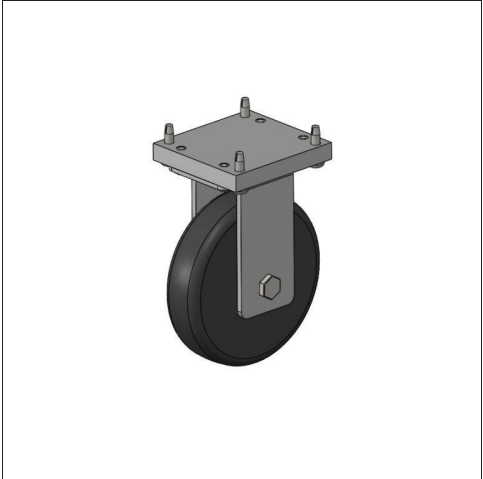
- Wheel: Cushion Tread Rubber.
- Housing: Mild Steel, Bright Zinc Plated.
- Mounting Plate: Clear Anodized Aluminum.

WEIGHT:

- 3.00 lbs [1.36 kgs]

ASSEMBLY HARDWARE INCLUDED:

- Rigid Caster with 5.0 in [127.0 mm] Diameter Wheel (H030042100), 1 each.
- 2 x 2 Slot Rigid Caster Adapter Plate (H030021100), 1 each.
- 1/4" - 20 x 1" Socket Head Cap Screws (25C100KCSS), 4 each.
- 1/4" - 20 x 5/8" Socket Head Cap Screws (25C62KCSS), 4 each.



| | Inches (in.) | Millimeters (mm) |
|---|--------------|------------------|
| A | 3.63 | 92.20 |
| B | 2.38 | 60.45 |
| C | 3.00 | 76.20 |
| D | 0.31 | 7.87 |
| E | 1.75 | 44.45 |
| F | 0.31 | 7.87 |
| G | 4.13 | 104.90 |
| H | Ø 5.00 | Ø 127.00 |
| I | – | – |
| J | – | – |
| K | – | – |
| L | – | – |

H030081100

3 x 3 Slot Rigid Caster Assembly With Brakes

TYPICAL USE:

- Assembly mounts to the end of a 3 x 3 Slot Support Beam (E010070100) to provide fixed caster mobility.

FEATURES:

- All mounting hardware included.

WEIGHT CAPACITY:

- 200 lbs [91 kgs]

MATERIALS:

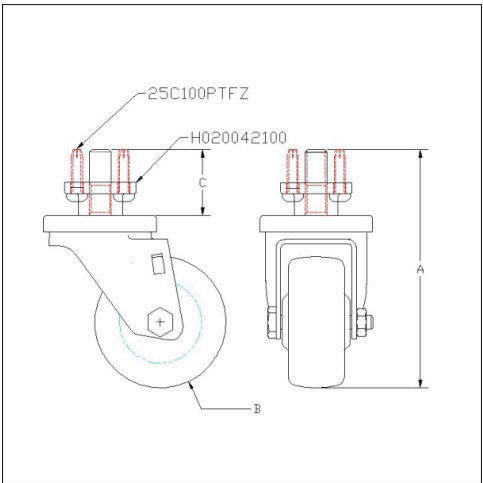
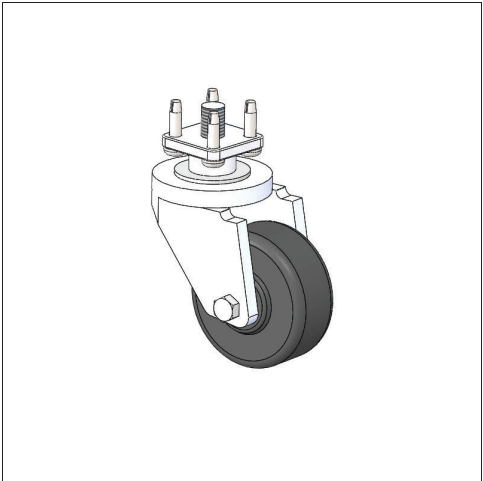
- Wheel: Cushion Tread Rubber.
- Housing: Mild Steel, Bright Zinc Plated.
- Mounting Plate: Clear Anodized Aluminum.

WEIGHT:

- 3.94 lbs [1.79 kgs]

ASSEMBLY HARDWARE INCLUDED:

- Rigid Caster with 5.0 in [127.0 mm] Diameter Wheel (H030042100), 1 each.
- 3 x 3 Slot Rigid Caster Adapter Plate (H030032100), 1 each.
- 1/4" - 20 x 1" Socket Head Cap Screw (25C100KCSS), 4 each.
- 1/4" - 20 x 5/8" Socket Head Cap Screw (25C62KCSS), 4 each.



| | Inches (in.) | Millimeters (mm) |
|---|--------------|------------------|
| A | 5.44 | 138.10 |
| B | Ø 3.00 | Ø 76.20 |
| C | 1.50 | 38.10 |
| D | – | – |
| E | – | – |
| F | – | – |
| G | – | – |
| H | – | – |
| I | – | – |
| J | – | – |
| K | – | – |
| L | – | – |

H030131100

1 x 1 Slot Swivel Caster Assembly

TYPICAL USE:

- Assembly mounts to the end of a 1 x 1 Slot Support Beam to provide swivel caster mobility.

FEATURES:

- Caster swivels 180° upon double ball bearings and hardened raceways.
- 1/2" diameter rod.
- Mounting hardware included.

WEIGHT CAPACITY:

- 150 lbs [68 kgs]

MATERIALS:

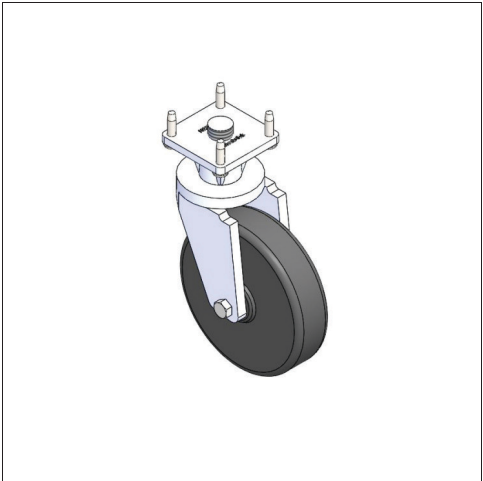
- Wheel: Cushion Tread Rubber.
- Housing: Mild Steel, Bright Zinc Plated.

WEIGHT:

- 1.75 lbs [0.79 kg]

ASSEMBLY HARDWARE INCLUDED:

- Swivel Caster with 1/2" - 13 Stem (H030092100), 1 each.
- 1 x 1 Slot Leveling Foot Support (H0200421), 1 each.
- 1/4 - 20 x 1 Pan Torx Type F Plated (25C100PTFZ), 4 each.
- 9/16" x 2 1/2" Caster Washer (56N250WSDZ/125), 1 each.



H030141100

2 x 2 Slot Swivel Caster Assembly

TYPICAL USE:

- Assembly mounts to the end of a 2 x 2 Slot Support Beam to provide swivel caster mobility.

FEATURES:

- Caster swivels 180° upon double ball bearings and hardened raceways.
- 3/4" diameter rod.
- Mounting hardware included.

WEIGHT CAPACITY:

- 200 lbs [91 kgs]

MATERIALS:

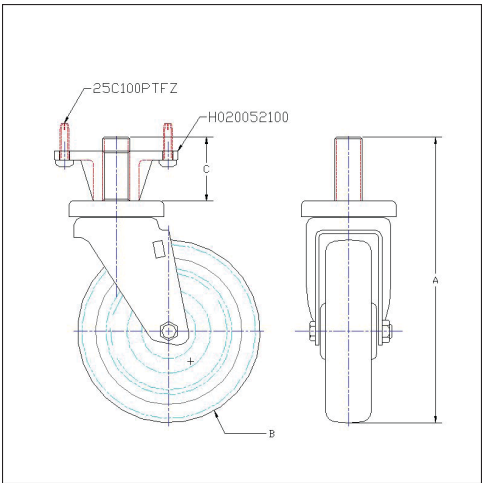
- Wheel: Cushion Tread Rubber.
- Housing: Mild Steel, Bright Zinc Plated.

WEIGHT:

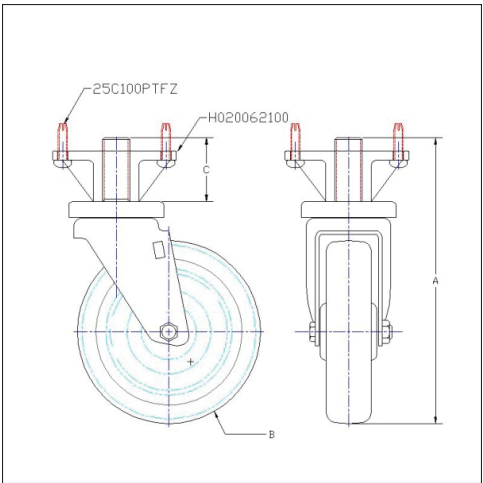
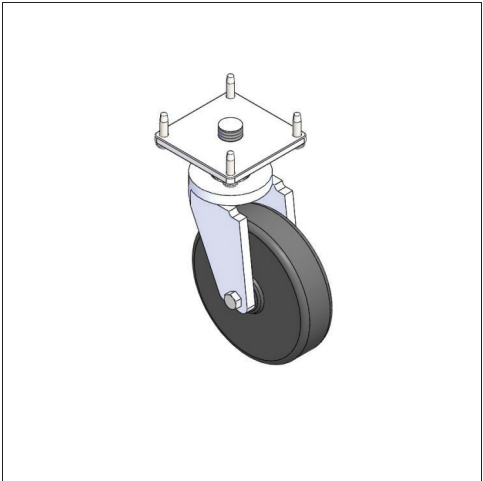
- 2.88 lbs [1.30 kgs]

ASSEMBLY HARDWARE INCLUDED:

- Swivel Caster with 3/4" - 10 Stem (H0301021), 1 each.
- 2 x 2 Slot Leveling Foot Support (H0200521), 1 each.
- 1/4 - 20 x 1 Pan Torx Type F Plated (25C100PTFZ), 4 each.
- 13/16" x 2 1/2" Caster Washer (81N250WSDZ/125), 1 each.



| | Inches (in.) | Millimeters (mm) |
|---|--------------|------------------|
| A | 7.81 | 198.33 |
| B | 2.59 | 65.79 |
| C | 1.75 | 44.45 |
| D | – | – |
| E | – | – |
| F | – | – |
| G | – | – |
| H | – | – |
| I | – | – |
| J | – | – |
| K | – | – |
| L | – | – |



| | Inches (in.) | Millimeters (mm) |
|---|--------------|------------------|
| A | 7.81 | 198.33 |
| B | 2.59 | 65.79 |
| C | 1.75 | 44.45 |
| D | — | — |
| E | — | — |
| F | — | — |
| G | — | — |
| H | — | — |
| I | — | — |
| J | — | — |
| K | — | — |
| L | — | — |

H030151100

3 x 3 Slot Swivel Caster Assembly

TYPICAL USE:

- Assembly mounts to the end of a 3 x 3 Slot Support Beam to provide swivel caster mobility.

FEATURES:

- Caster swivels 180° upon double ball bearings and hardened raceways.
- 3/4" diameter rod.
- Mounting hardware included.

WEIGHT CAPACITY:

- 200 lbs [91 kgs]

MATERIALS:

- Wheel: Cushion Tread Rubber.
- Housing: Mild Steel, Bright Zinc Plated.

WEIGHT:

- 3.00 lbs [1.36 kgs]

ASSEMBLY HARDWARE INCLUDED:

- Swivel Caster with 3/4" - 10 Stem (H0301021), 1 each.
- 3 x 3 Slot Leveling Foot Support (H020062100), 1 each.
- 1/4 - 20 x 1 Pan Torx Type F Plated (25C100PTFZ), 4 each.
- 13/16" x 2 1/2" Caster Washer (81N250WSDZ/125), 1 each.