

Leading the Industry with Modular Solutions

Table Of Contents

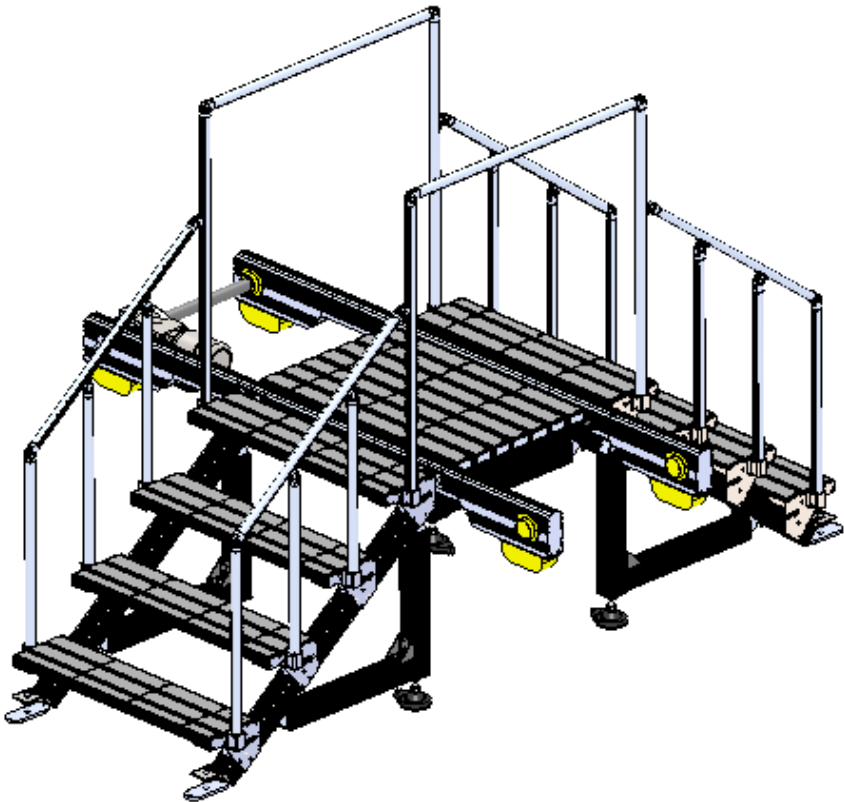
Title Page.....	1
Table Of Contents.....	3
Aluminum vs Steel.....	4
Section 1 Conveyors.....	5
<u>Conveyor Configuration.....</u>	6-8
<u>Chain Beam.....</u>	9
<u>Snap on Guide Rail.....</u>	10,11
<u>Heavy Duty Guide Rail.....</u>	12,13
<u>Outboard Guide Rail.....</u>	14-16
<u>Drive Assembly.....</u>	17
<u>Idler Assembly.....</u>	18
<u>Inboard Motor Mount.....</u>	19
<u>Outboard Motor Mount.....</u>	20
<u>Support Information.....</u>	21
<u>T Slotted Extrusion Information.....</u>	22
<u>Part Table of Contents.....</u>	23-24
<u>Part Information.....</u>	26-60
Section 2 Additional Products and Services.....	
<u>Systems Integration.....</u>	62
<u>Stair Tread and Walkover.....</u>	63
<u>Custom Product Pallets.....</u>	64
<u>Special Machinery.....</u>	65

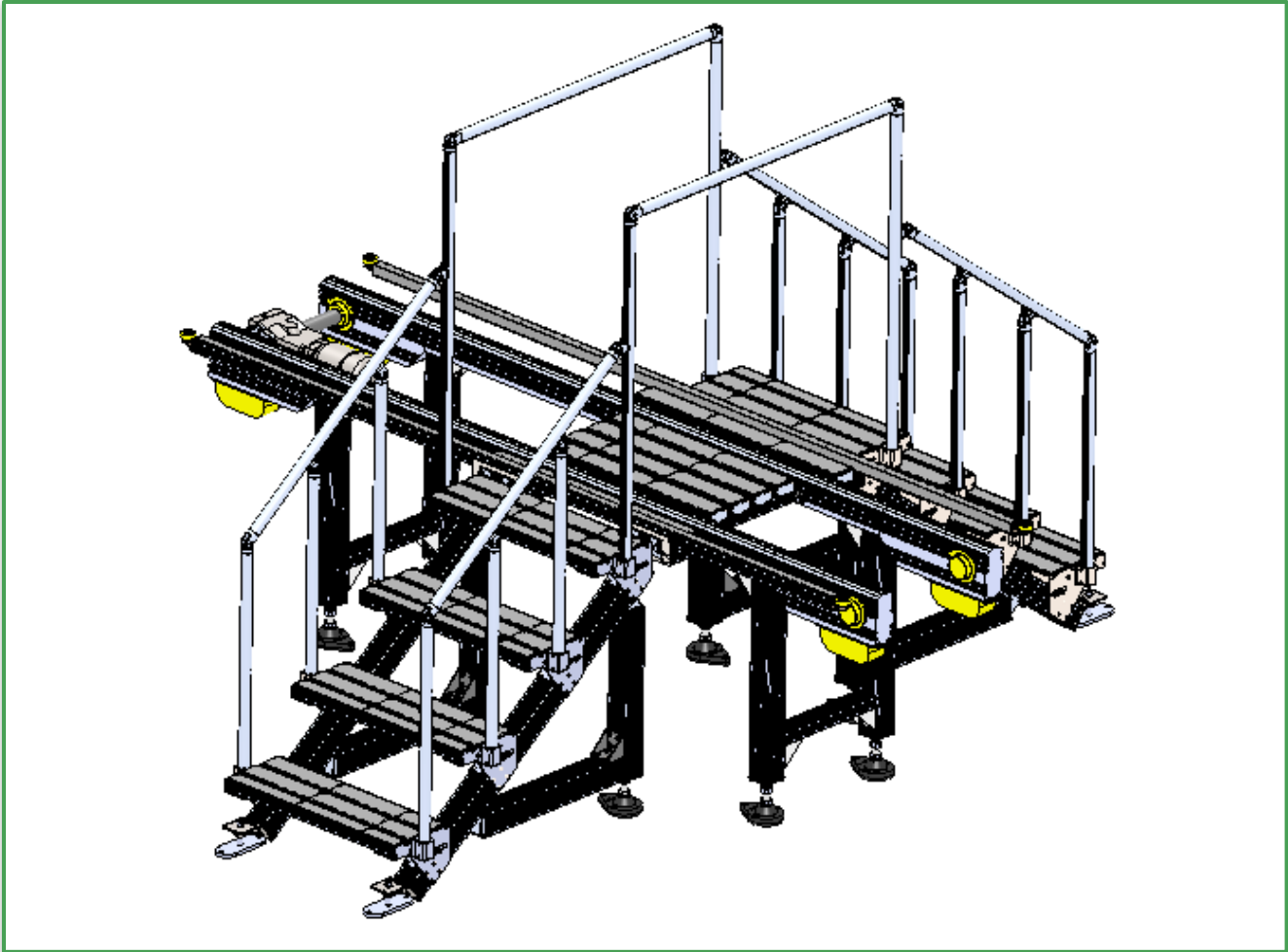
Aluminum Vs Steel

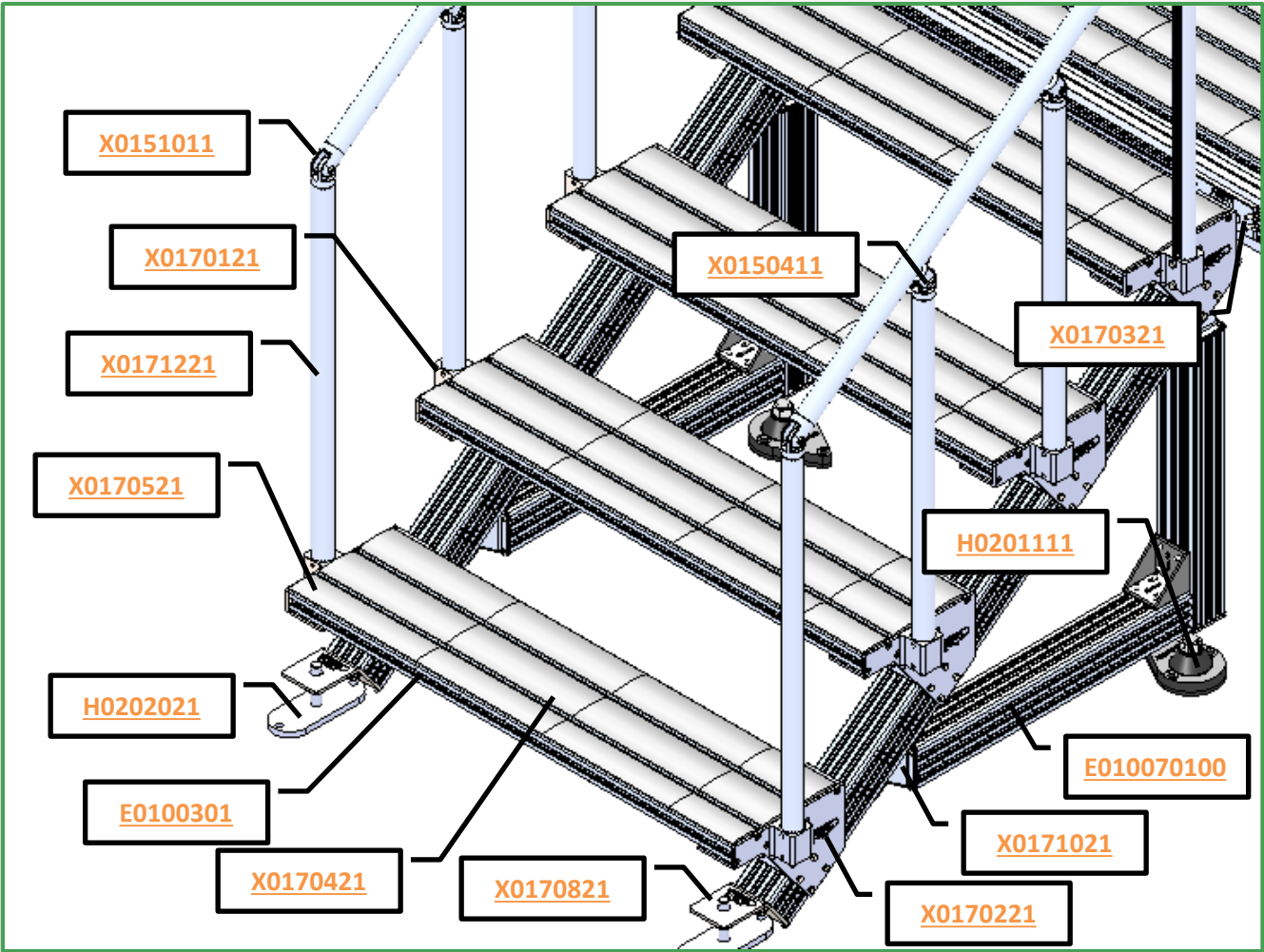
- There is no welding required!
- Our hard anodized extruded aluminum does not rust or corrode, so no painting is necessary, EVER!
- Extruded aluminum beam profiles are designed to be lightweight while maintaining exceptional high strength characteristics.
- Modu-Tek aluminum beam profiles are T-slotted for ease and speed of assembly.
- Only three simple hand tools (1/2" wrench, 5/32" Allen Wrench, and a Standard Tape Measure) are required to build structural systems.
- Structures built from Modu-Tek aluminum beam can be quickly reconfigured to incorporate design changes.
- Extruded aluminum beams are easily expanded or altered to meet the requirements of any on-going project.
- Additional components and accessories are simple to add at any time.

WHY TEKNO?

- Tekno has the most competitive pricing in the industry. When the overall cost of completing a project from start to finish are evaluated, Tekno is the true leader in the price war.
- Tekno's components do not require drilling, tapping, or counter boring; saving time, expense, and labor.
- Tekno offers a wide variety of hardware to meet every design requirement.
- Tekno's extruded aluminum profiles are T-6 grade...the strongest in the industry!
- Because our Modu-Tek components were designed with the assembly process in mind, absolutely no other product is faster or easier to assemble. ...but we don't want you to simply take our word for it... We want you to let us prove it.







Conveyor Part Numbers

X01-0000-0000-0000-0000

Conveyor part Category

Height of Conveyor
(HOC)

(Ex 26.25" = 2625)

Minimum = 12.00"

(1200)

Maximum = 48.00"

(4800)

Width of Conveyor (WOC)

Minimum =

Maximum =

Step Width (SW)

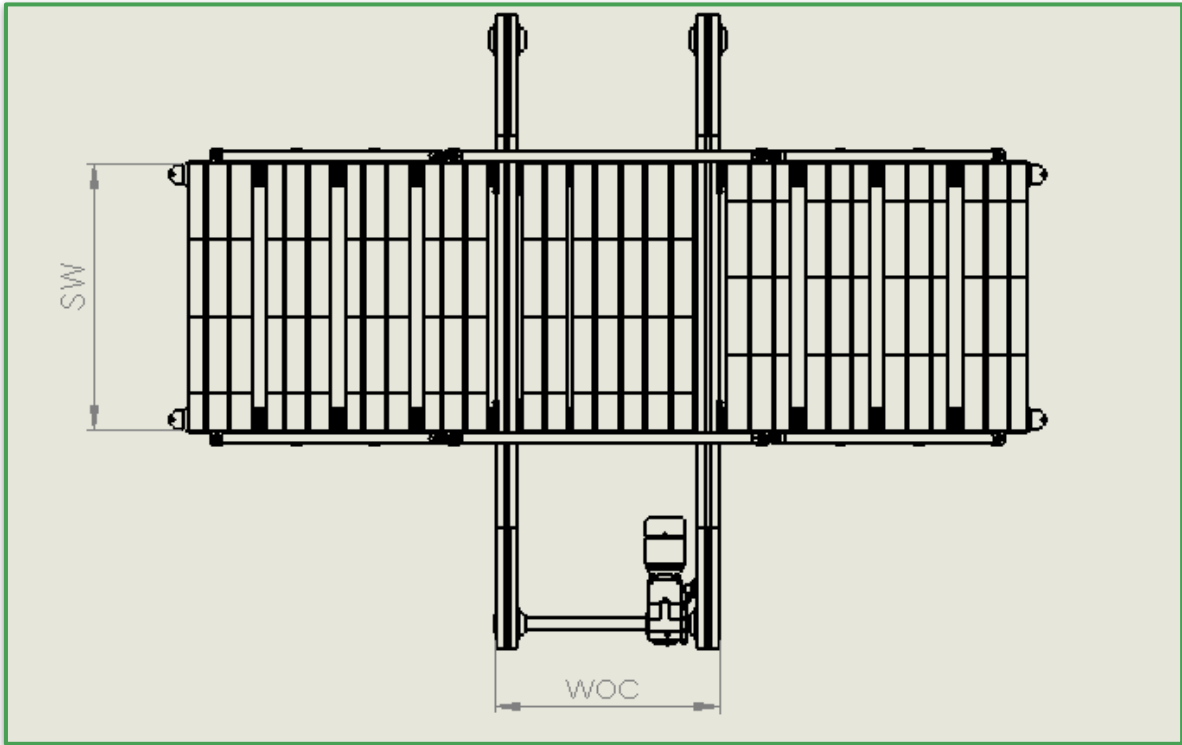
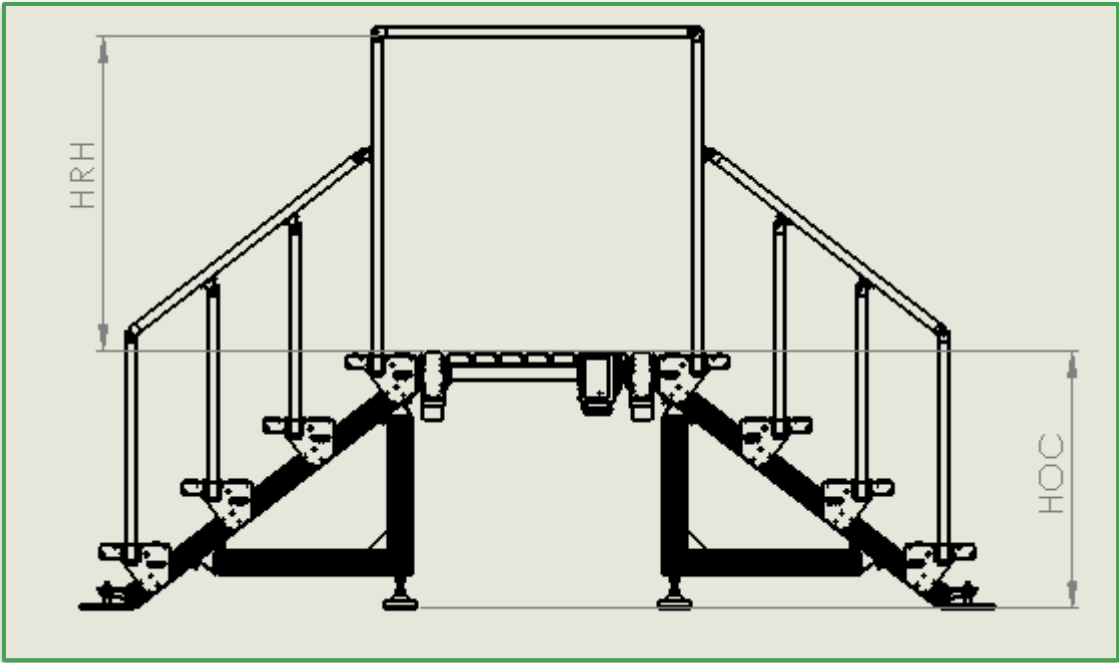
Minimum =

Maximum =

Height of Hand Rail (HRH)

Minimum =

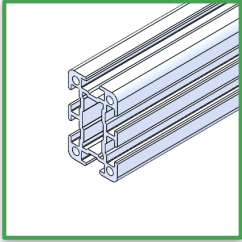
Maximum =



1x2 Extrusion

E0100301

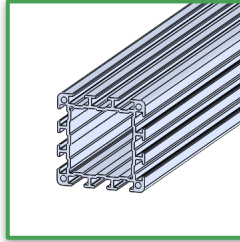
pg.28



3X3 Extrusion

E010070100

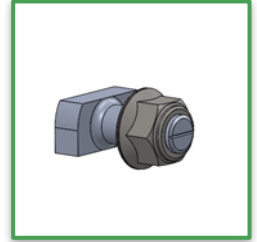
pg.25



3/4" T-Bolt Assembly

H0100111

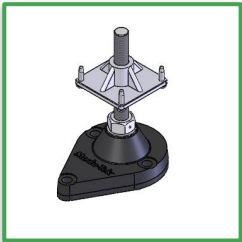
pg.25



3X3 Teardrop Leveling Foot Assembly

H0201111

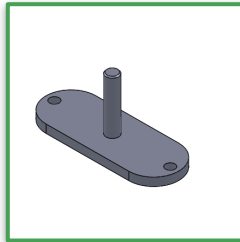
pg.25



Leveling Foot Mount

H0202021

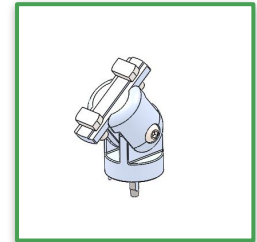
pg.25



Hand Rail T Bracket Assembly

X0150411

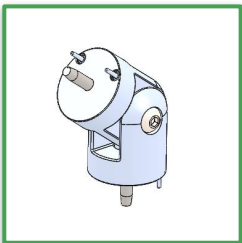
pg.25



Hand Rail Corner Assembly

X0151011

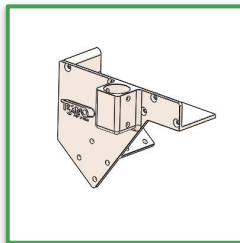
pg.25



Step Mounting Bracket Left Hand

X0170121

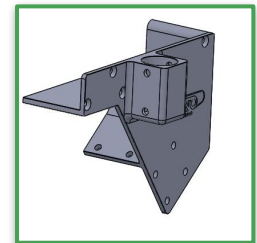
pg.25



Step Mounting Bracket Right Hand

X0170221

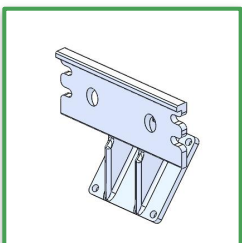
pg.25



Conveyor Mount Bracket

X0170301

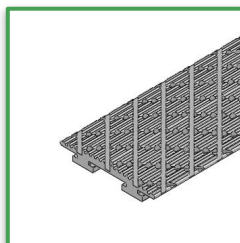
pg.25



3 Slot Tread Page Insert

X0170421

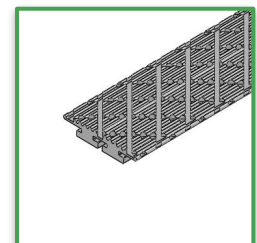
pg.25



2 Slot Tread Plate Insert

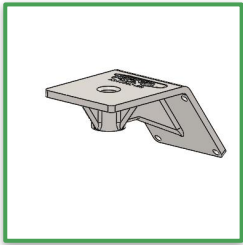
X0170521

pg.25



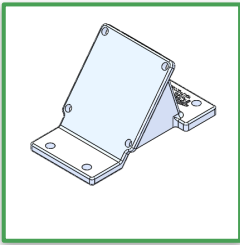
Step Foot Leveling Bracket

X0170821
pg.25



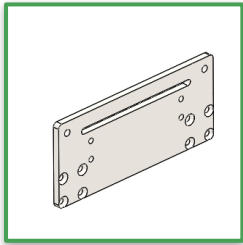
52.5 Degree Web Bracket

X0171021
pg.25



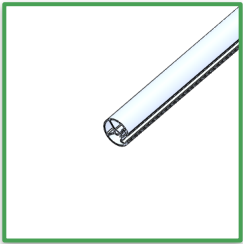
Outboard Guide Rail Walkover
Mounting Bracket

X0171121
pg.25



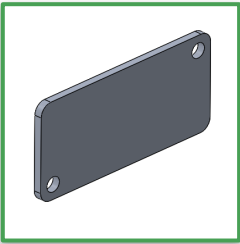
Hand Rail Extrusion

X0171221
pg.25



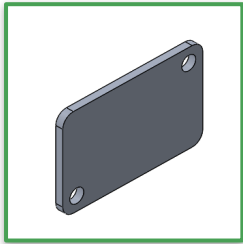
1X3 End Plate

X0172621
pg.25



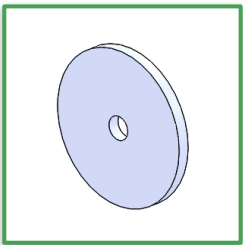
1x2 End Plate

X0172721
pg.25



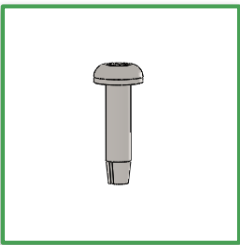
Hand Rail End Plate

X0172821
pg.25



1/4-20X1.00 Self Tapping Pan Head Screw

25C100PTFZ
pg.25



E0100301

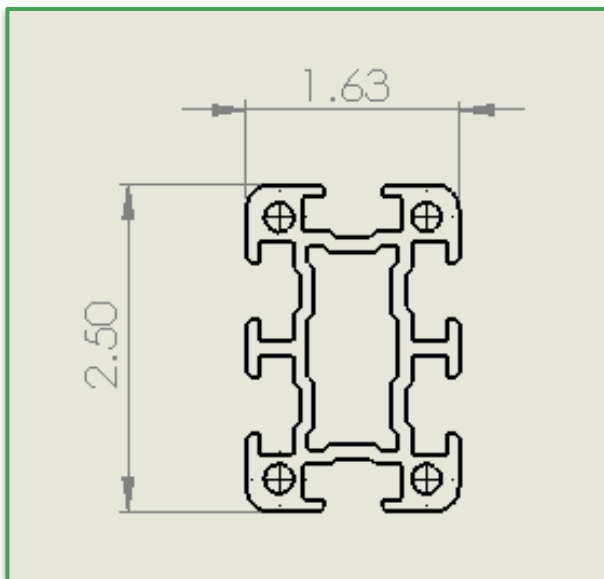
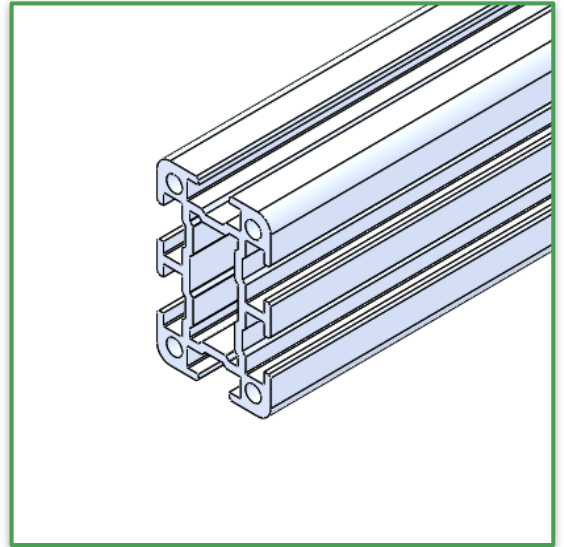
1x2 Extrusion

Typical Uses:

- Steps for walkovers

Features:

- T-slotted extrusions for adjustments and mounting.



E010070100

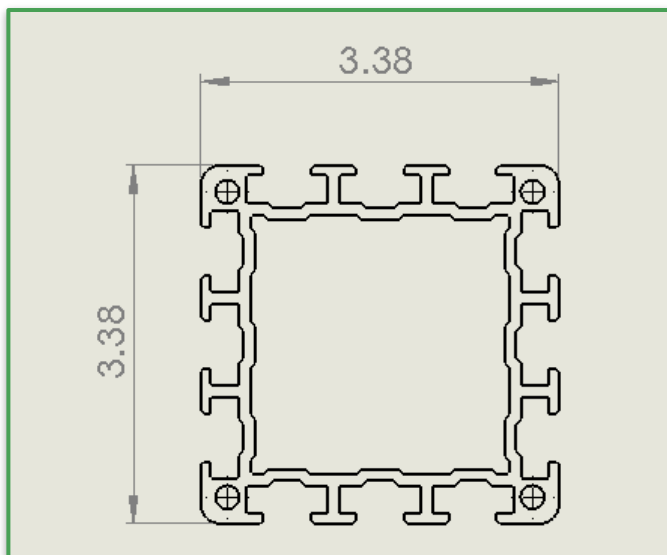
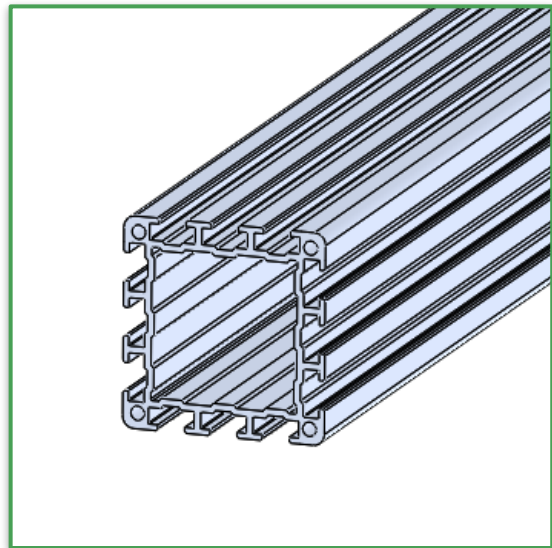
3X3 Extrusion

Typical Uses:

- Support structure for walkovers

Features:

- T slotted extrusion for adjustments and mounting



H0100111

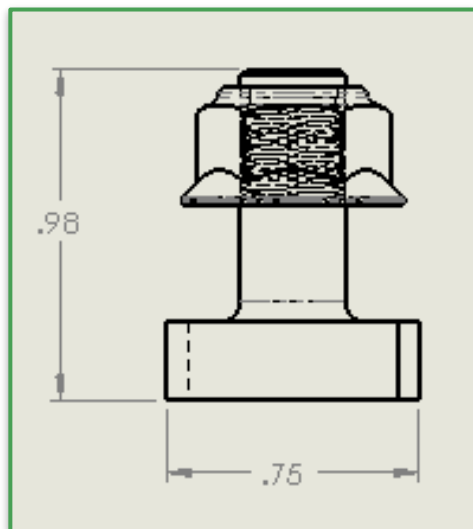
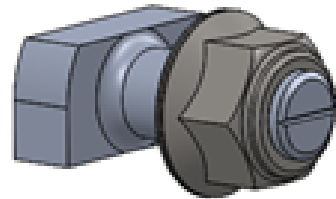
$\frac{3}{4}$ " T-Bolt Assembly

Typical Uses:

- Fastening brackets and other assemblies to T slot extrusions

Features:

- Preassembled nut and bolt to drop into brackets
- Nylock Nut
- Grade 8



H0201111

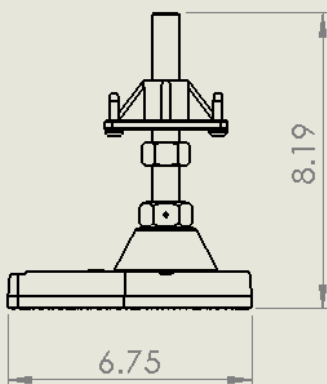
3X3 Teardrop Leveling Foot Assembly

Typical Uses:

- Supports for steps

Features:

- $\frac{3}{4}$ 10 threaded adjustment for leveling



H0202021

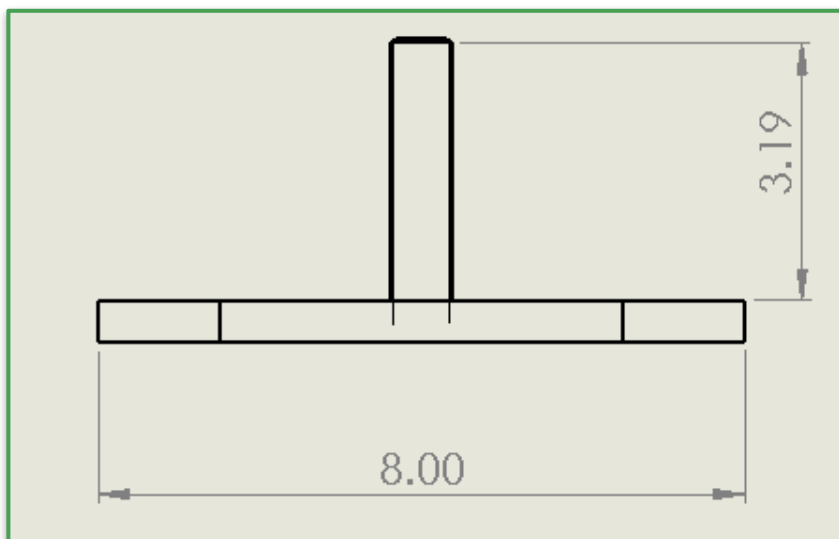
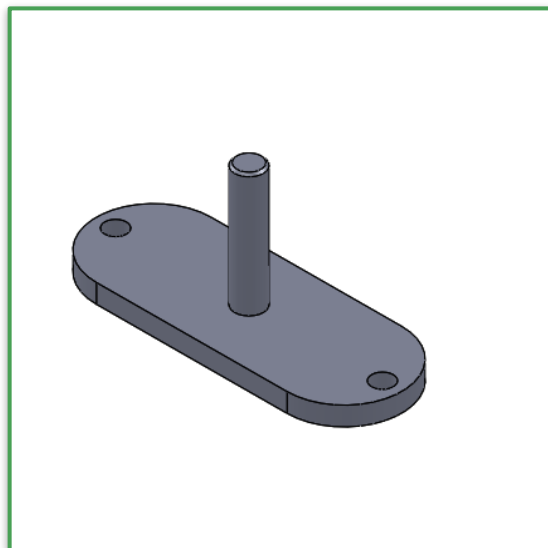
Leveling Foot Mount

Typical Uses:

- Conveyor/walkover support feet

Features:

- $\frac{3}{4}$ 10 adjustment threads
- Holes for half inch anchor bolts



X0150411

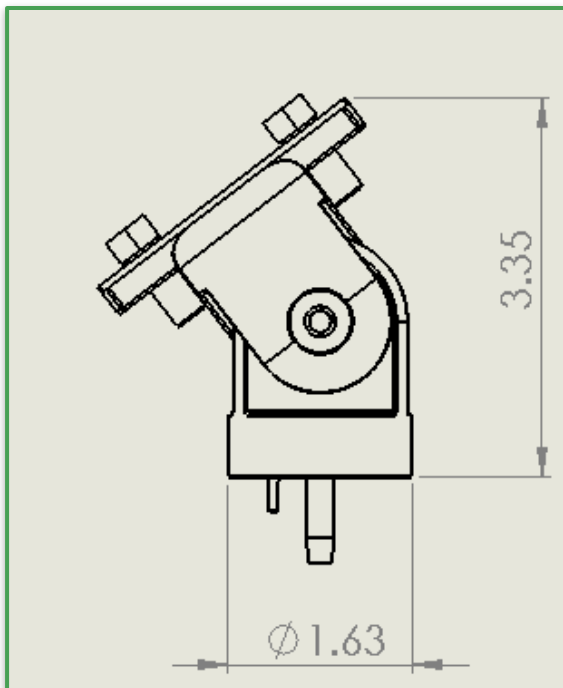
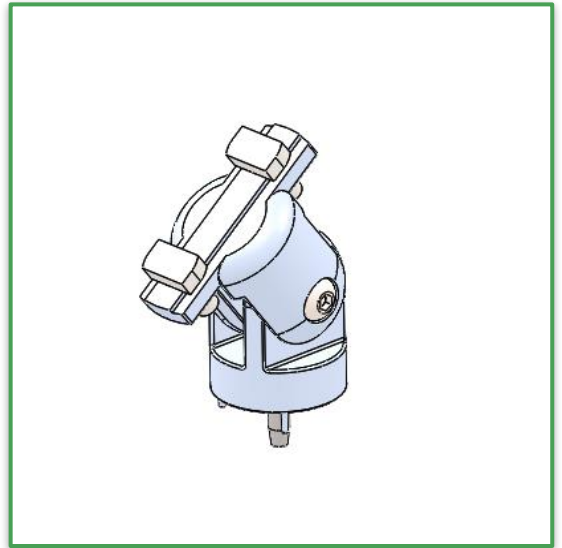
Hand Rail T Bracket Assembly

Typical Uses:

- Hand rail vertical supports

Features:

- Alignment keys to match T slots on hand rail
- Locking screws to lock position



X0151011

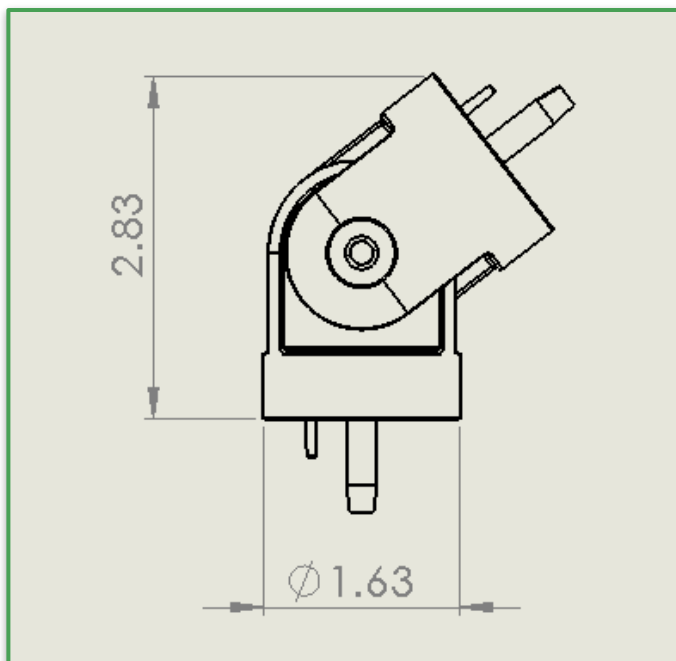
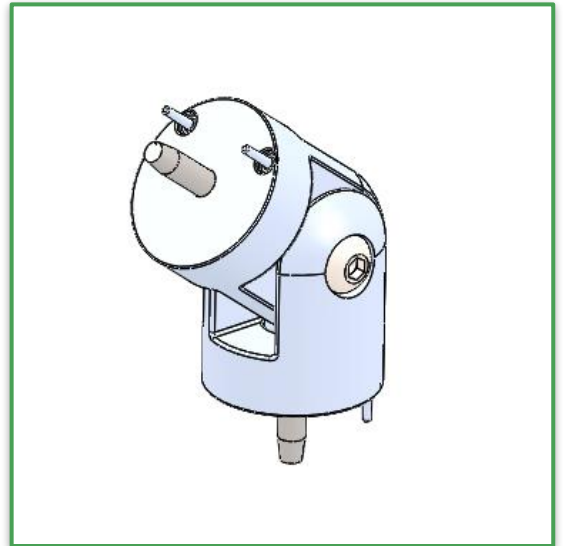
Hand Rail Corner Assembly

Typical Uses:

- For end corner of hand rails

Features:

- Adjustable angle
- Locking screws to hold position



X0170121

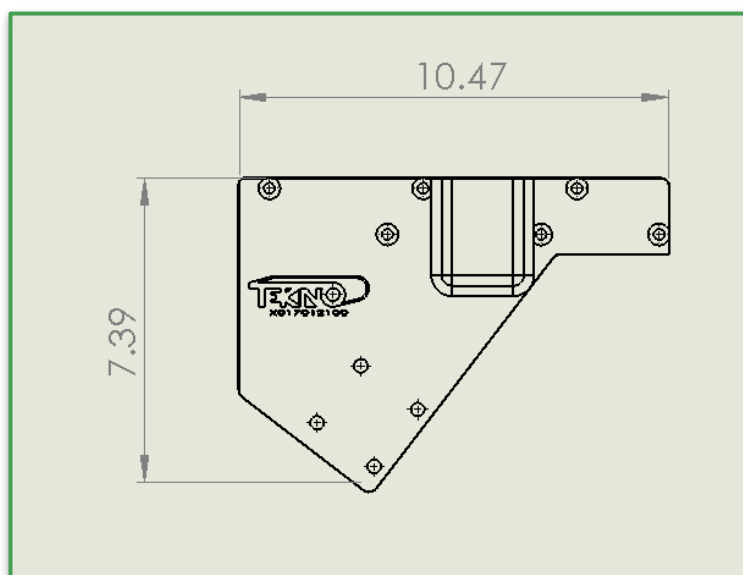
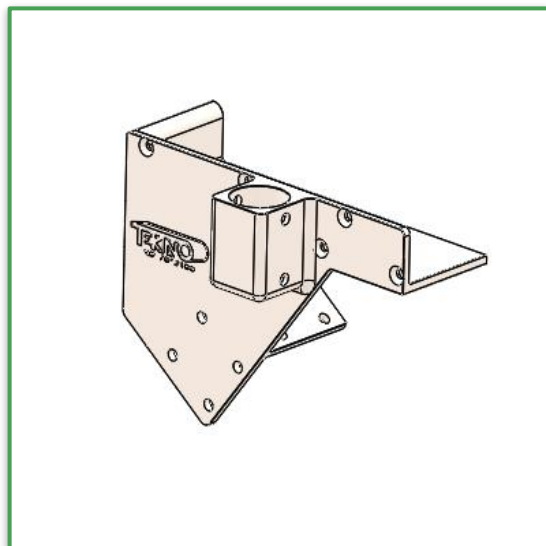
Step Mounting Bracket Left Hand

Typical Uses:

- Make steps for walkovers, platforms, ect.

Features:

- 37.5 degree angle for optimal step arrangement
- 1 5/8 diameter handrail receiver



X0170221

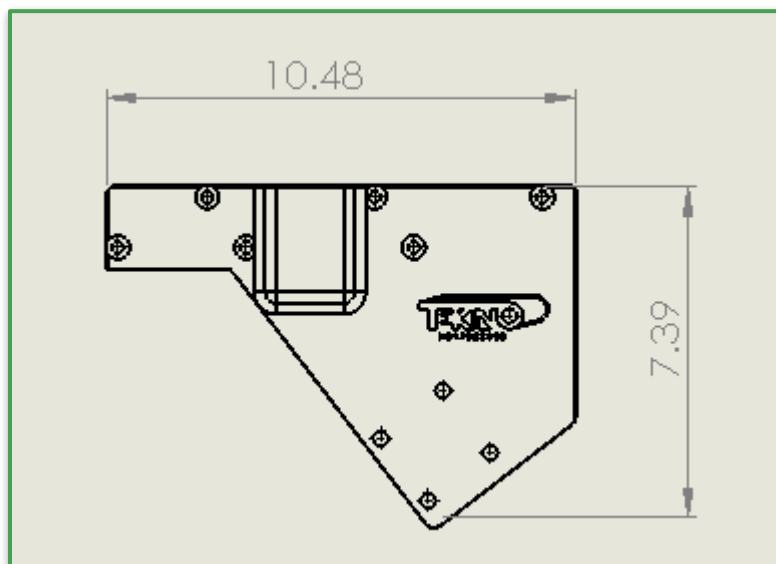
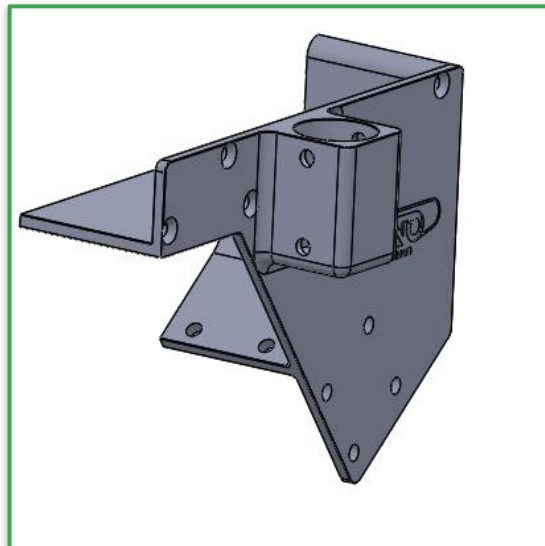
Step Mounting Bracket Right Hand

Typical Uses:

- Shaft cover for PD60 conveyor
- Supports and cross braces

Features:

- T-Slotted Extrusions for easy adjustment and accessories



X0170321

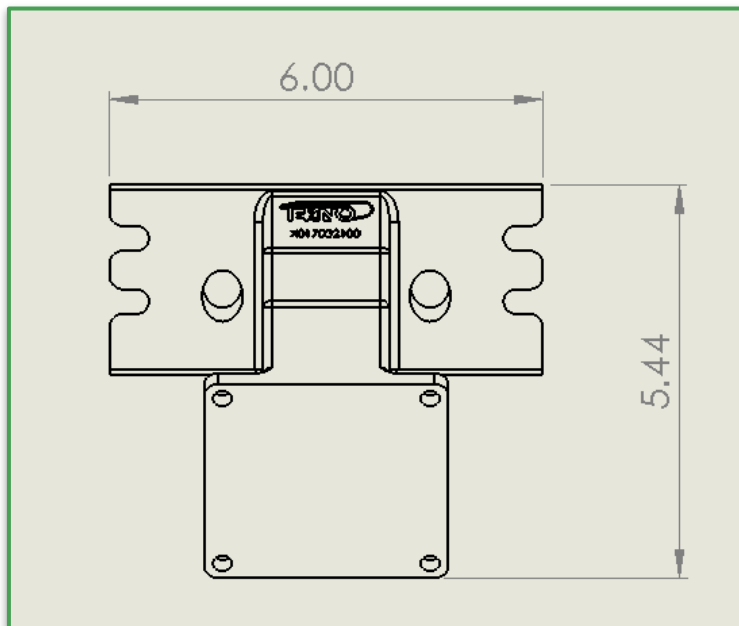
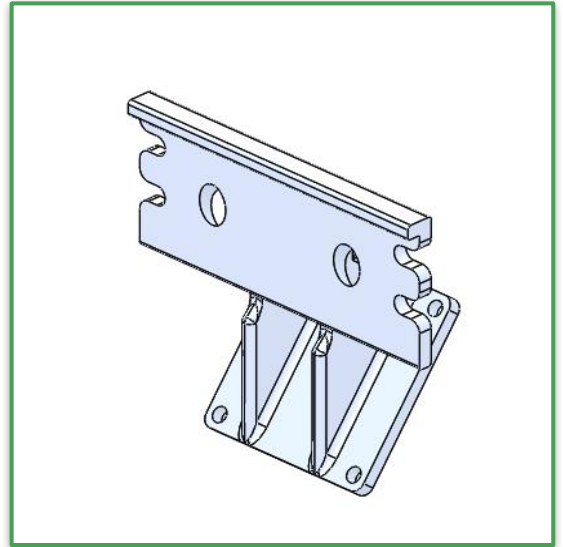
Conveyor Mount Bracket

Typical Uses:

- Attach crossover stairs to 2060 Conveyors

Features:

- Holes to align with 3x3 extrusion
- Self aligning feature for 2060 Conveyors



X0170421

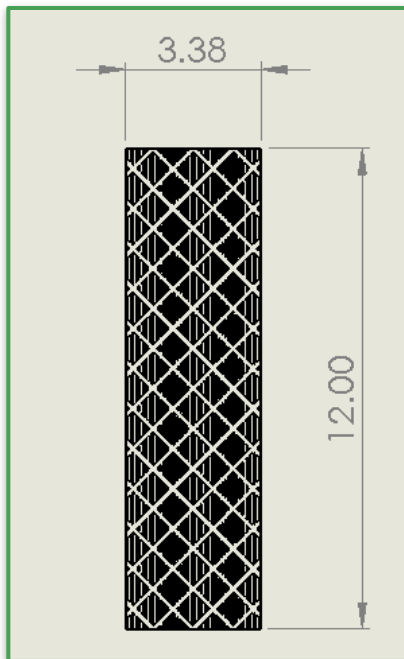
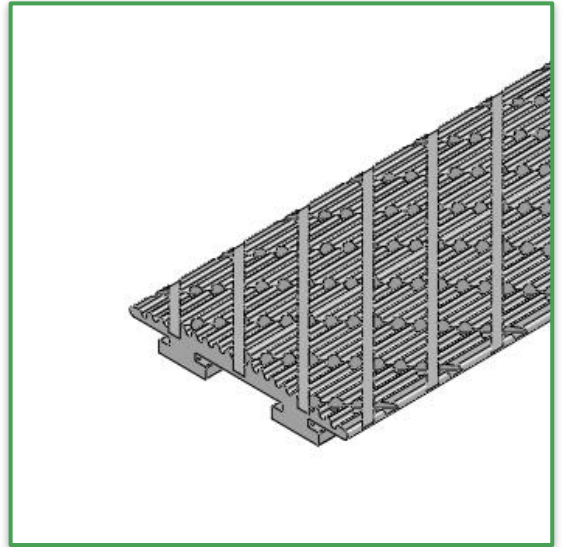
3 Slot Tread Plate Insert

Typical Uses:

- Cross braces on lift and transfers

Features:

- T slotted extrusions for easy adjustment



X0170521

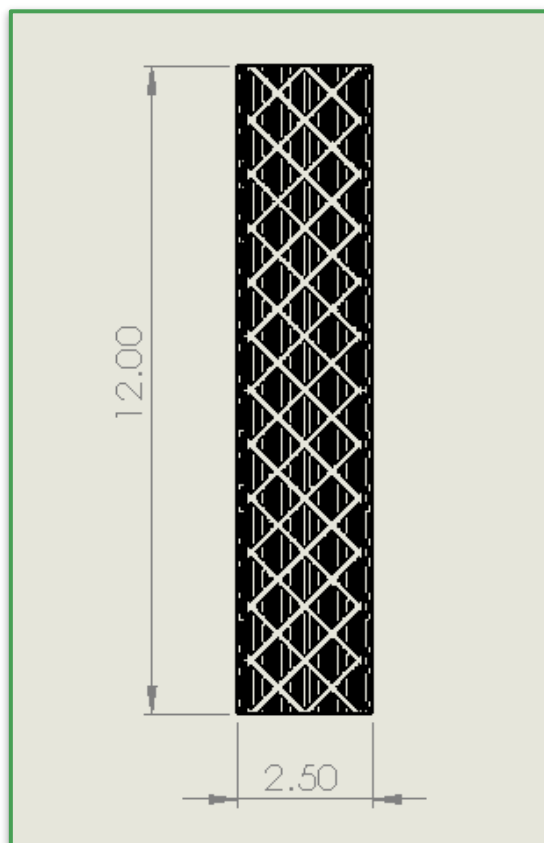
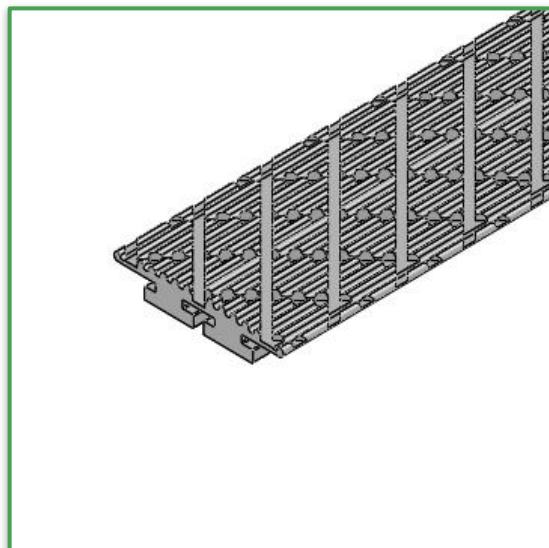
2 Slot Tread Plate Insert

Typical Uses:

- Slip resistant surface for steps

Features:

- Matches any of Teknos 2 slot extrusions



X0170821

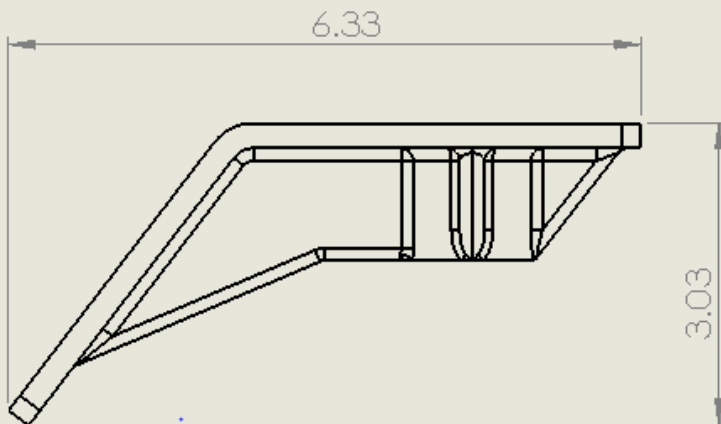
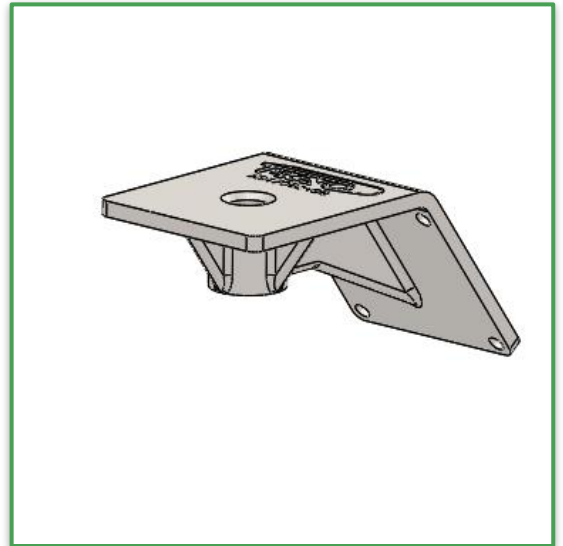
Step Foot Leveling Bracket

Typical Uses:

- Support foot at the end of a set of steps

Features:

- Alignment holes for 3x3 extrusion
- $\frac{3}{4}$ 10 threaded receiver



X0171021

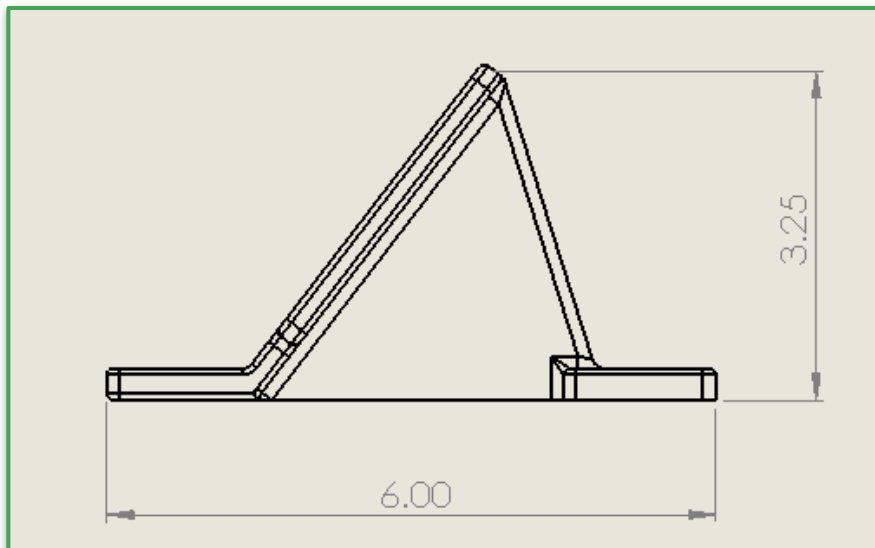
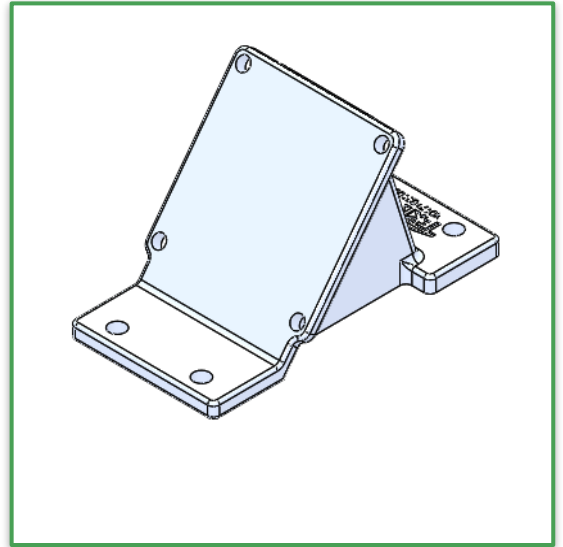
52.5 Degree Web Bracket

Typical Uses:

- Support structure for walkover steps

Features:

- Holes to align to 3x3 extrusion

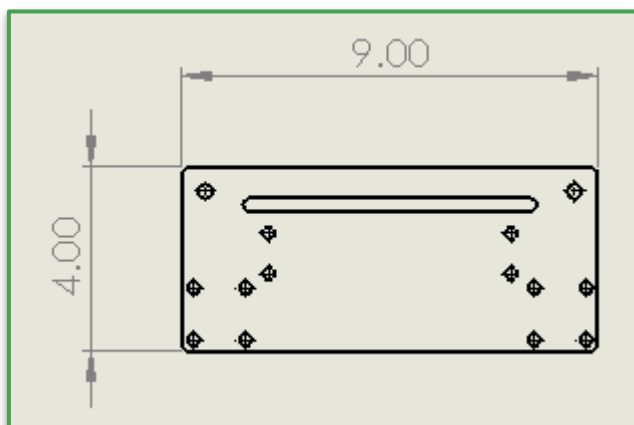
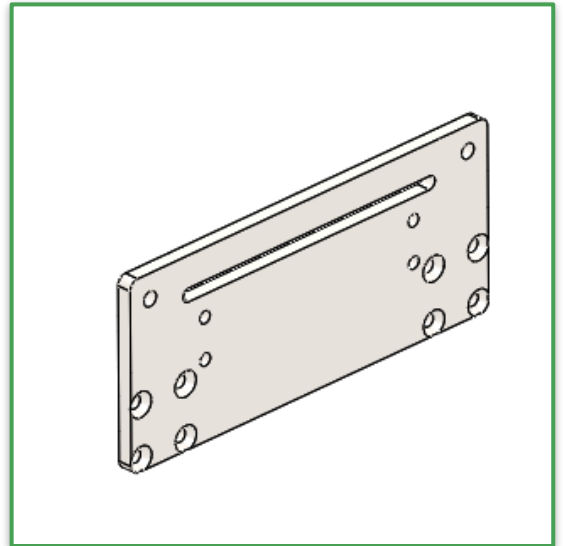


X0171121

Outboard Guide Rail Walkover Mounting Bracket

Typical Uses:

- To mount walkover steps to outboard guide rail

Features:

X0171221

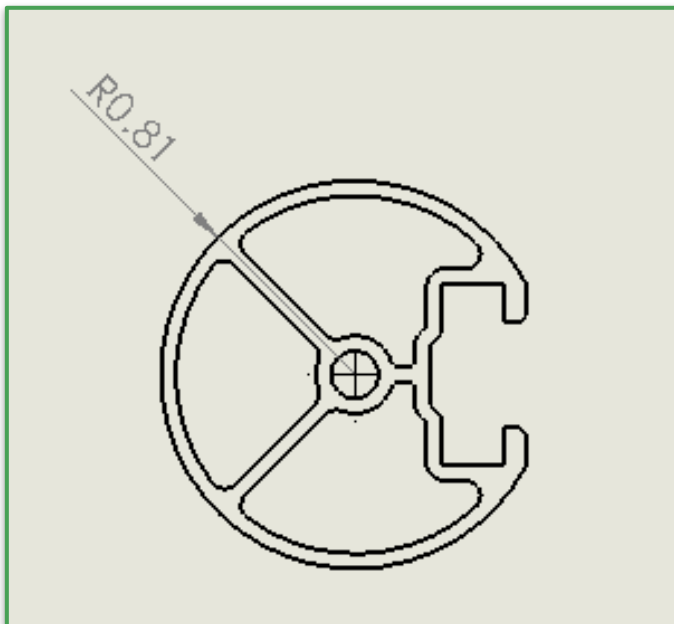
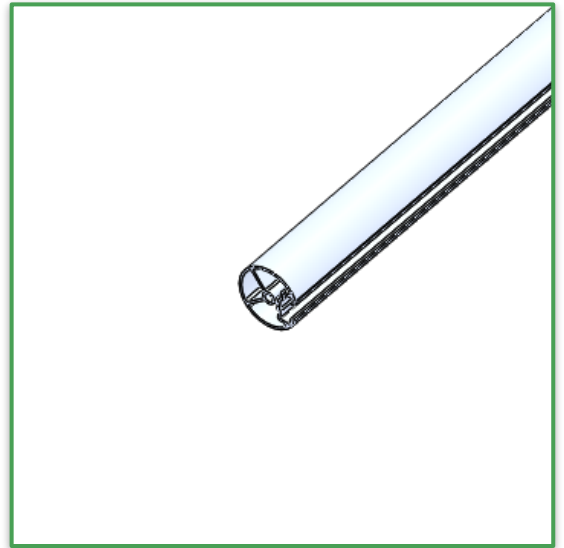
Hand Rail Extrusion

Typical Uses:

- Hand rails for walkovers, catwalks, or other platforms.

Features:

- 1 5/8 round shape to meet OSHA standards.
- T slotted extrusions for accessories/adjustments.



X0172621

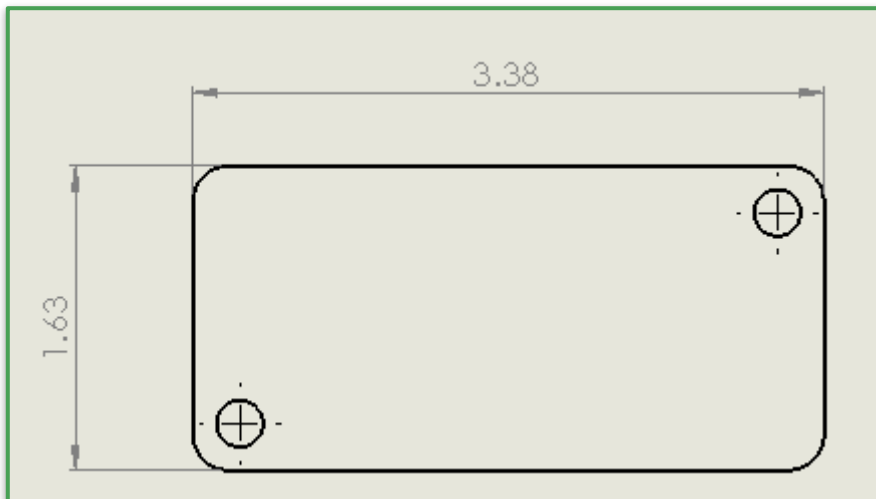
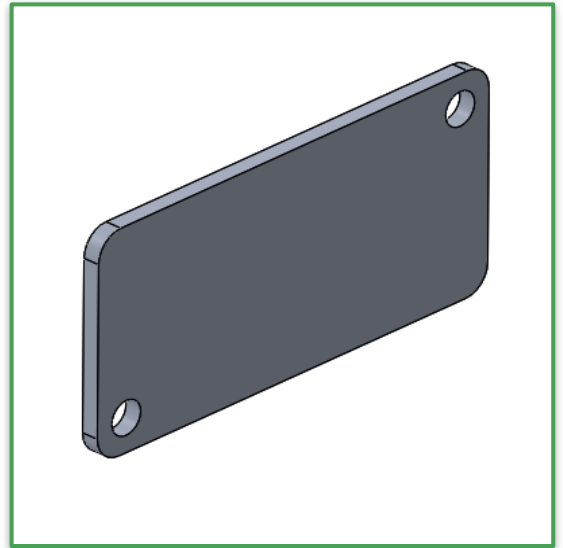
1X3 End Plate

Typical Uses:

- End cap for 1x3 extrusions to hold tread plates in place

Features:

- Matches 1x3 profile



X0172721

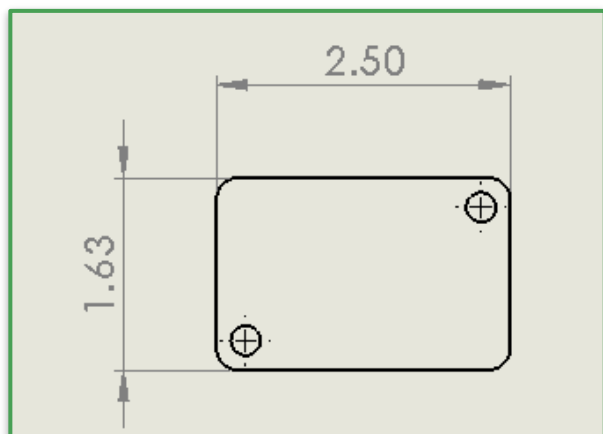
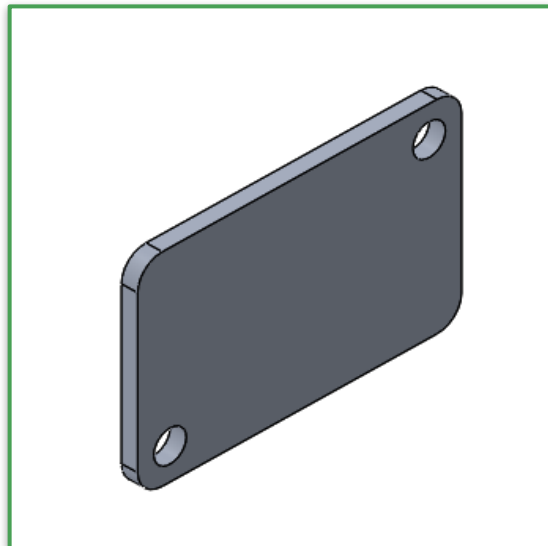
1x2 End Plate

Typical Uses:

- End cap for 1x2 extrusions to hold tread plates in place

Features:

- Matches 1x2 profile



X0172821

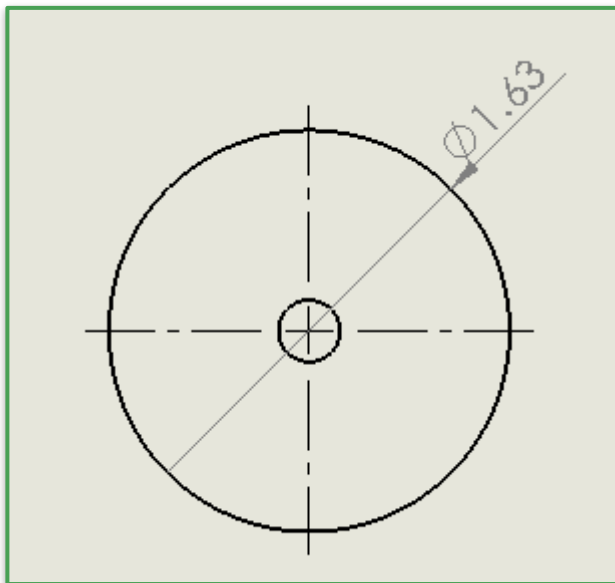
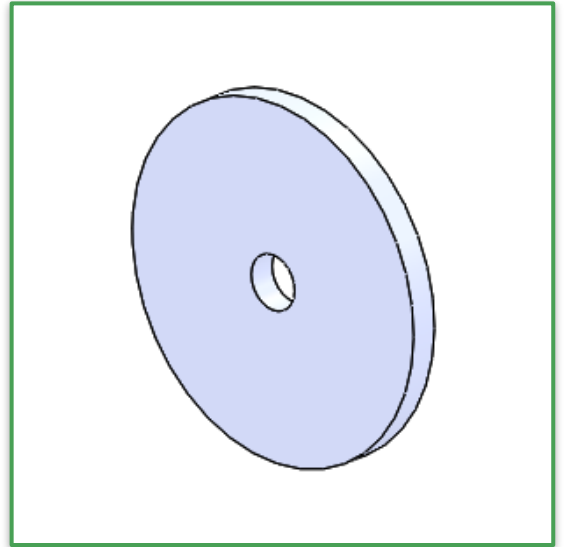
Hand Rail End Plate

Typical Uses:

- End cap for handrail

Features:

- Matches hand rail profile



25C100PTFZ

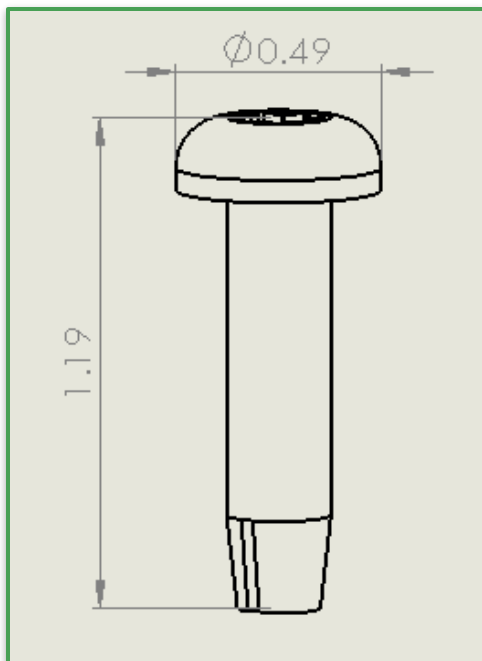
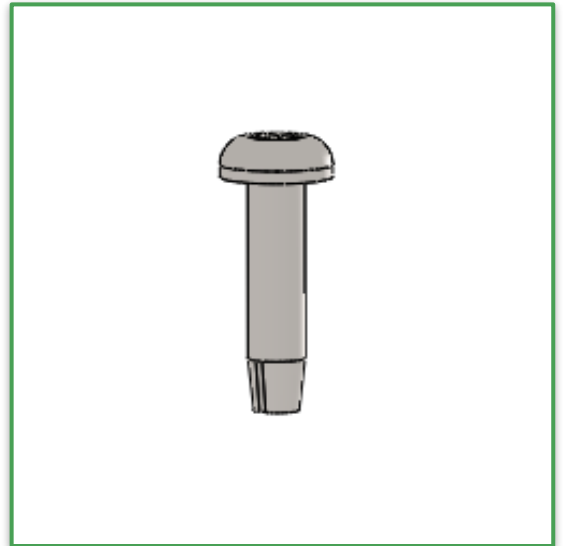
¼-20X1.00 Self Tapping Pan Head Screw

Typical Uses:

- Attaching angled web brackets and end brackets for handrail

Features:

- Type F thread cutting



Systems Integration

Tekno provides systems integration services to clients for projects large and small. With over 25 years of experience in mainstream industry, both domestically and internationally, we have the proven know-how, expertise, and product familiarity to make your automated production systems a success. With internal design, assembly, machining, control panel configuration, and programming capabilities, Tekno offers a breadth and depth of services worthy of the world's finest manufacturing facilities.

Tekno Conveyor Systems



Tekno is an Original Equipment Designer and Manufacturer of a world class line of modular conveyor components. Tekno conveyors can handle a wide variety of product and carrier types, loads, sizes, and conveyance speeds. Tekno conveyors are extremely flexible in application, and they're re-configurable when production requirements change. Thousands of automated conveyance, assembly, and processing systems built from the well-established product lines have been fielded across North America and beyond.

Use Tekno's own Non-synchronous Conveyor System for Palletized Product Assembly & Conveyance:



Tekno Offers Turn-Key Manufacturing & Material Handling Systems Integration Services.



12-2 ADDITIONAL PRODUCTS & SERVICES

Stair Tread and Walkovers

Tekno's product line also allows you to design and build completely modular stair treads and walkovers for your application. Built of the highest quality extruded anodized aluminum, these structures provide lightweight, yet ultra sturdy platforms and staircases. Our tread plate material is designed with a premium on safety; our tread plates provide raised traction features. We also offer vented tread plate that allows dirt and other debris which accumulates to fall freely through the plate, virtually eliminating the risk of slippage. As is the case with any Tekno product, these structures possess incredible versatility and are easily configured/reconfigured for any Application. Call us today for further information on our Walkovers and Stair Treads!





12-3 ADDITIONAL PRODUCTS & SERVICES

Custom Product Pallets

Tekno can design and build product carriers of almost any size, shape, and composition, to very close tolerances.

Tekno's in-house fabrication, machining and assembly capability can provide special fixtures, pallet electrification equipment, multiple-model corner and product support blocks, pallet-to-station locking methods, status flag, in-line product burn-in and testing features, corner rollers, UHMW-PE glide edging, stopper cutouts, and raised aluminum pedestals. Send your custom applications our way.

Check Out Tekno's Own Internal Custom Pallet Design, Fabrication, and Build Capabilities:



Special Machinery:

- Tekno's engineering, machining, fabrication, assembly, and documentation departments provide a wealth of capabilities in the creation and application of custom machinery.
- With specialists in conveyance, part fixturing, material flow, heat treatment, furnaces and ovens, vertical product lifts, brazing technology, manufacturing processes, in-line gauging, product inspection and testing, automation programming and robotic Applications.
- Tekno can handle many types of special equipment projects.
- Special machinery is pre-built in our facility, then tested, de-bugged, and run off for the customer prior to shipment and installation of the equipment. To help your operators and maintenance technicians better understand and care for your new machinery.
- Tekno also offers various levels of custom documentation and training packages.



Tekno's Skilled Engineers & Technicians Can Design, Fabricate, Build, and Install Equipment to Meet Your Needs: